

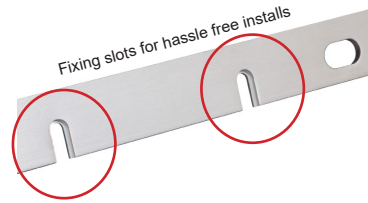


DOUBLE BRACKETS RGL SAFETY RANGE

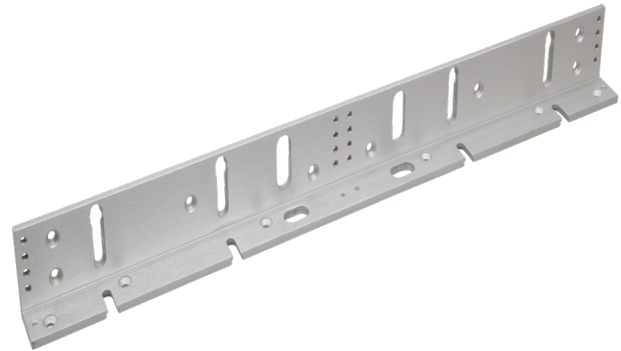
MAGNETIC LOCK

Fire tested range of maglocks and brackets from a market leader in access control.

FIRE TESTED to
BSEN1634-1-2014 & BS476:Part22:1987
(30, 60, 90 & 120 min timber door-sets)



BK600-D-ZL



BK600-D-L

SPECIFICATION

BK600-D-ZL & BK600-D-L
 • Specially designed bracket slots that allows for a simple one person installation of double maglocks
 • Fully adjustable brackets
 • Suitable for all RGL Slimline Maglocks - inc: ML600-D / ML600-D-M / ML600-D-MDS

FEATURES

BK600-D-ZL & BK600-D-L
 • Fire rated (30, 60, 90 & 120 min timber door set)
 • L bracket for use on outward opening doors
 • ZL bracket for use on inward opening doors
 • Anodised aluminium finish

If you are looking for an architectural finish, then please view the following bracket:
 • BK600-D-FL/AB

Other bracket options:
 • GD600ZL (Glass Door ZL)

- AB600CL (Architectural L)
- ADJ600-L (Highly adjustable L)
- AH600 (Required for Fire Doors)
- BK600U (Glass door bracket)

INWARD
OUTWARD

OTHER PRODUCTS

EBNT/TF-1



120ISM-1



BK600-F-L/AB



DU-CB/PTE



DIMENSIONS

BK600-D-ZL
 • 250x48x25 (mm) L Bracket (LxWxD)
 • 180x46x46 (mm) Z Bracket (LxWxD) x2
 1.17kg Boxed
 BK600-D-L
 • 500x29x47 (mm) L Bracket (LxWxD)
 0.47kg Boxed

CONTENTS

BK600-D-ZL
 • Double L Bracket (600lb)
 • 2 x ZL Brackets
 • 2 x Fixing kits

BK600-D-L
 • Double L Bracket (600lb)
 • Fixing kit



Manufactured by a BSIA Member