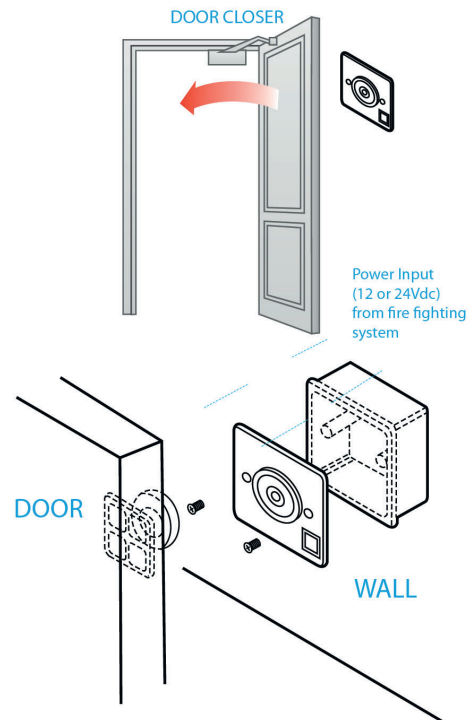
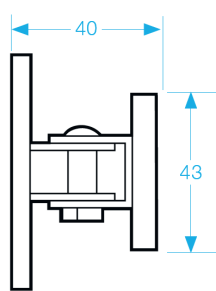
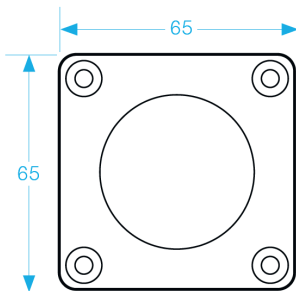
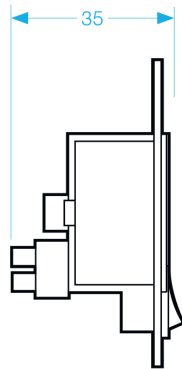
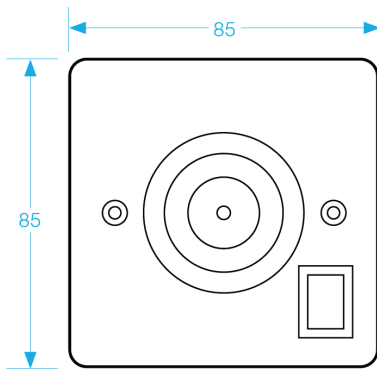


## DR24/F

### Door Retaining Magnet

#### Features:

- Operating voltage 12V DC
- Stainless steel
- Fire tested: EN1155
- Up to 70lbs (32kg) holding force
- Over-ride switch
- Flush mount



#### TECHNICAL DATA

	DR24/F
Voltage tolerance	±15%
Current draw	150mA at 12V DC, 70mA at 24V DC (at temperature 20°C)
Operating temperature	-10~45°C (14 to 131°F)
Humidity	0~95% non-condensing
Weight	380g (approx)