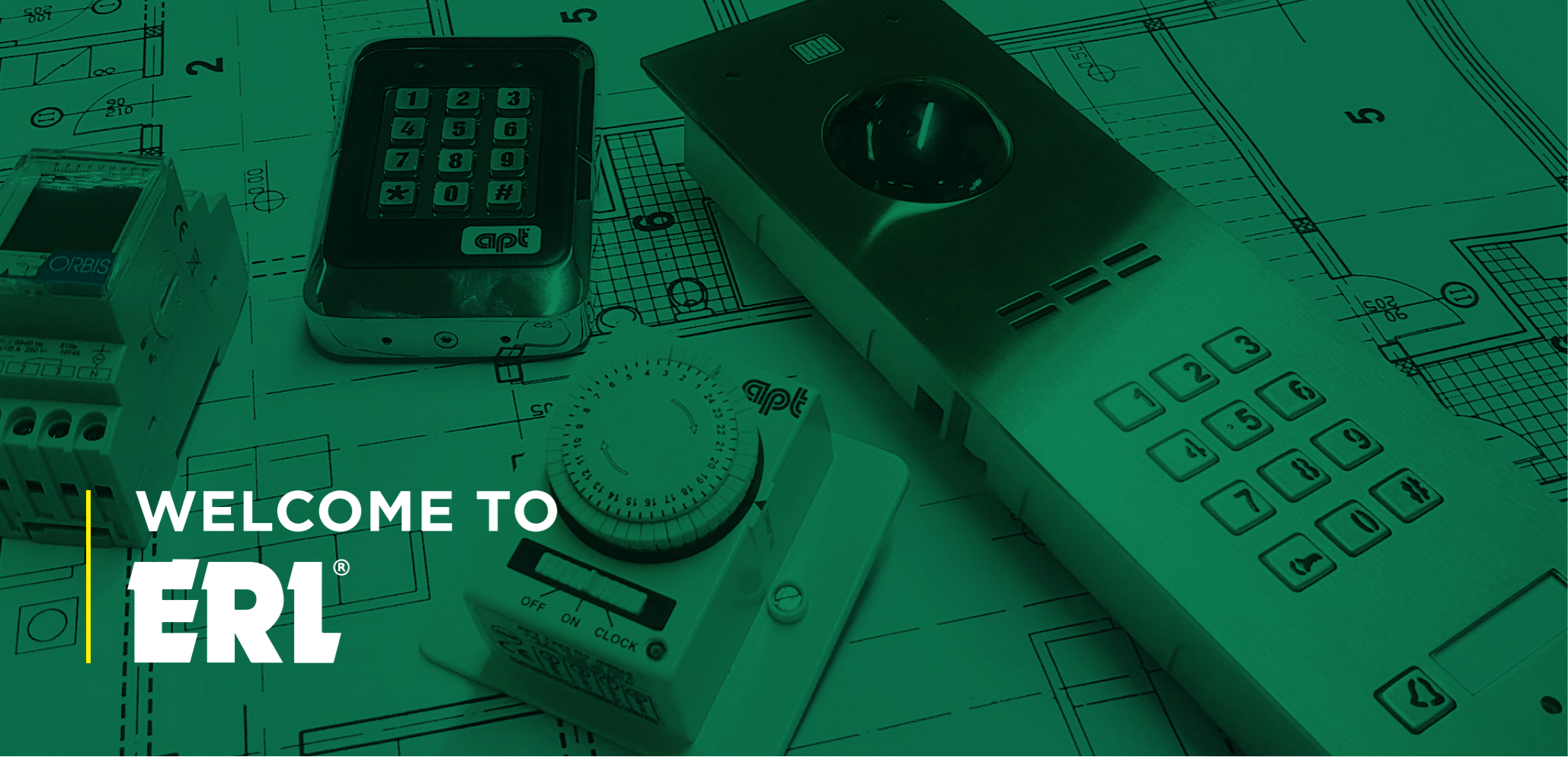


ERL[®]

Est. 1971

**PRODUCT
CATALOGUE**

ISSUE 55



WELCOME TO ERL[®]

We are a well-established distributor which has been supplying the electrical wholesale industry for more than 48 years.

In that time we have cultivated a successful, long-standing position in the marketplace and have exclusive distribution of APT and Orbis products. This allows us to offer an extensive range of market leading products. Every product we stock undergoes a rigorous quality control assessment programme.

We take the time to do this because we believe in providing the best products at the best prices. We pride ourselves on delivering our customers a quick and efficient service and offer free comprehensive technical support to you and your customers. The following pages are an introduction of what we have to offer.

We trust you will find what you are looking for. If not, call our dedicated sales team who will be happy to assist you or visit our website for more information.

Linda Schonthal *Managing Director*

Listed in **LUCKINS[™]**

CONTENTS

ACCESS CONTROL 04	DOOR ENTRY 16	LOCKS 28
ABOUT ORBIS 34	POWER SUPPLIES 36	TIME SWITCHES 40
ENERGY MEASUREMENT & MANAGEMENT 46	INDUSTRIAL CONTROLS 50	ELECTRIC VEHICLE CHARGERS 54
THERMOSTATS & HEATING 56	LIGHTING CONTROLS 62	
ASSISTANCE ALERT 68	CABLE MANAGEMENT 74	CLOCKS, TOOLS, SAFETY WEAR & AV 78

Check out our website to stay up to date with new products, special prices, details of our offers and promotions.

W: www.electroreplacement.com **T:** 01923 255344
E: sales@electroreplacement.com **F:** 01923 255829

ACCESS CONTROL

Coded Access | Proximity Readers | Kits | Smart, App Based | Door Release and Exit Switches | Door Retainers | Door Opener Closer |



Listed in  **LUCKINS™**



FEATURED PRODUCT

Combined Proximity & Keypad Access Panel, Bluetooth

- Bluetooth, backlit keypad, die-cast aluminium
- Operating voltage 12V DC • H120 x W79 x D21mm
- IP65 rated, weather resistance, vandal resistance
- Multiple LED display with audible indication



DG800/BT

BEST SELLER

Door Release Switch, Green Dome, Surface, 1 Gang

- Green dome button
- Brushed stainless steel fascia
- Surface or flush (surface box supplied)
- IP66 rated, vandal resistant



ESGD/S



ONEK1
Single Door Access Control Kit, Coded

- All components included, 3 year warranty
- Up to 21 users
- Dual relays output for multi-control
- Weather and vandal resistant keypad



ONEK3
Single Door Access Control Kit, Proximity

- All components included, 3 year warranty
- Up to 2000 user capacity
- Weather and vandal resistant keypad
- For domestic and commercial applications



ONEK4
Single Door Access Control Kit, Proximity

- All components included, 3 year warranty
- Up to 2000 user capacity
- Fail safe magnetic lock
- Weather and vandal resistant keypad
- For domestic and commercial applications



ONEK2
Single Door Access Control Kit, Coded

- All components included, 3 year warranty
- Up to 21 users
- Fail safe magnetic lock
- Dual relays output for multi-control
- Weather and vandal resistant keypad



ONEK5
Single Door Access Control Kit, Coded, Slim

- All components included, 3 year warranty
- Backlit keypad
- Fail secure electric release
- Surface mounted keypad
- For domestic and commercial applications



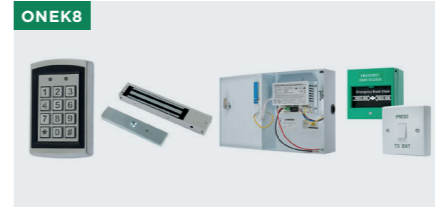
ONEK6
Single Door Access Control Kit, Coded, Slim

- All components included, 3 year warranty
- Backlit keypad
- Fail safe magnetic lock
- Surface mounted keypad
- For domestic and commercial applications



ONEK7
Single Door Access Control Kit, Coded & Proximity

- All components included, 3 year warranty
- For any sensitive area where an entry needs to be restricted
- Up to 2000 users



ONEK8
Single Door Access Control Kit, Coded & Proximity

- All components included, 3 year warranty
- For any sensitive area where an entry needs to be restricted
- Fail safe magnetic lock
- Up to 2000 users



LDRK/EDL
Door Release Lock Kit

- Suitable for surface/recessed mounted lock
- For wooden doors opening inwards
- Fail secure



LDRK/ECK
Coded Access/Magnetic Door Release Lock Kit

- Fail-safe (often used for fire exit route doors)
- Suitable for inward/outward opening doors
- Internal / external use
- IP44 rated, vandal resistant



LDRK/ECK/BPS
Coded Access/Magnetic Door Release Lock

- Fail-safe (often used for fire exit route doors)
- Suitable for inward/outward opening doors
- Internal / external use
- IP44 rated, vandal resistant



LDRK/KDRS
Door Release Lock Kit

- Magnetic door release lock kit
- Fail safe (often used for fire exit route doors)
- Suitable for inward/outward opening doors
- Supplied with key switch to allow authorised lock override



LDRK/KDRS/BPS
Door Release Lock Kit with Boxed Power Supply

- Magnetic door release lock kit, supplied with key switch
- Fail safe (often used for fire exit route doors)
- For inward or outward opening doors (fail safe)
- Switch mode boxed power supply, battery back up



LDRK/MMLK
Door Release Lock Kit

- Push button entry and exit control
- Magnetic door release lock kit
- Fail safe (often used for fire exit route doors)
- Suitable for inward/outward opening doors



LDRK/MMLK/BPS
Door Release Lock Kit with Boxed Power Supply

- Push button entry and exit control
- Magnetic door release lock kit
- Fail safe (often used for fire exit route doors)
- Suitable for inward/outward opening doors



Wait/Enter Door Release Lock Kit

- For inward outward opening doors, (fail safe)
- Magnetic lock, 12V DC power supply
- Wait/enter indicator panel
- Door release switch



Wait/Enter Door Release Lock Kit

- For inward outward opening doors, (fail safe)
- Magnetic lock, 12V DC power supply
- Wait/enter indicator panel
- Door release switch



Disabled Persons Door Release Switch, Slimline

- For use with access control systems
- Large brushed stainless steel front plate
- Vandal resistant, tough surface mounting box
- Internal and external use



Disabled Persons Door Release Switch, 115mm dia, Surface

- For use with access control systems
- Large brushed stainless steel front plate
- Vandal resistant, tough surface mounting box
- Internal and external use



Disabled Persons Door Release Switch, 115mm dia, Surface

- For use with access control systems
- Large brushed stainless steel front plate
- Vandal resistant, tough surface mounting box
- Internal use complies to BS8300



Disabled Persons Door Release Switch, 85mm dia, Surface

- For use with access control systems
- Large brushed stainless steel front plate
- Vandal resistant, tough surface mounting box
- Internal use complies to BS8300



Door Release Push Switch, 22mm, 1 Gang, Surface or flush

- Designed for access control systems or electric lock installations
- Green plastic surface box, stainless steel fascia
- IP66 rated, vandal resistant
- Normally open, normally closed circuits



Door Release Switch, Surface or Flush

- Designed for access control systems or electric lock installations
- Normally open, normally closed circuits
- Supplied with slim surface box
- 10A contact rating



Door Release Switch, Green Dome, Surface, 1 Gang

- Green dome button
- Brushed stainless steel fascia
- Surface or flush (surface box supplied)
- IP66 rated, vandal resistant



Green Dome Door Release Switch - 1 Gang, Surface

- Narrow (85x39x28mm), wear resistant legend
- Brushed stainless steel fascia with green dome button
- IP66 rated, vandal resistant
- Contact rating 4A @ 30V AC/DC



Door Release Press to Exit Switch, Surface

- High visibility green button, momentary operation
- N.O/N.C contacts
- Fits into a standard flush back box
- Internal use



Combined Exit Switch/Emergency Door Release

- Single housing, surface mounted
- 80dB warning buzzer
- Green casing for easy recognition
- Clear, plastic hinged cover supplied



Exit Switch, Bluetooth, LED Surround, Green

- Exit button & bluetooth
- ABS plastic
- LED indicator
- Operating voltage: 12V DC



Exit Switch, Surface or flush, 1 Gang

- Large push button with 360o activation
- Brushed stainless steel fascia
- Machine cut legend
- IP55 rated, vandal resistant



Wireless Exit Button, Narrow, Surface

- Brushed Stainless Steel • Raised button
- Legend: Press to exit • Surface mount
- COM / NO / NC Change-over-contacts
- Wireless



Exit Switch, Surface/flush fitting, 1 Gang

- Stainless steel plate with stainless steel button
- Vandal resistant, high impact surface box supplied
- Wear resistant legend • Security screws (Allen key type)
- Double pole NO/NC contacts



Exit Switch, Narrow, Surface mounting

- Narrow (85x39x28mm)
- Brushed stainless steel fascia with stainless steel button
- Wear resistant legend
- IP66 rated



Exit Switch, Large push (85mm) Surface or flush

- Internal use only, stainless steel fascia
- Green surround for improved visibility
- Double pole N.O/N.C contact
- Vandal resistant retaining screws



Door Release Switch, LED Indicator, Surface

- Silver finish ABS plastic surround
- Metal button, momentary
- COM/NO/NC/change-over-contacts
- Red and green LED illumination



Door Release Switch, LED Indicator, Surface

- White finish ABS plastic surround
- Metal button, momentary
- COM/NO/NC/change-over-contacts
- Red and green LED illumination



Press For Assistance Switch

- Brushed stainless steel
- Supplied with flush box
- Vandal resistant



Emergency Door Release, Green, Deformable Plastic

- Deformable plastic window (no glass to break)
- Complies with risk assessment RA001, EN50133 and Industry Codes of Practice
- Supplied with two reset keys and one hex wrench
- Surface or flush mounting



Emergency Break Glass Door Release, Green

- Surface or flush mounting
- Test facility
- Protective film for safe retention of broken glass
- 2 x normally closed/normally open circuits



Replacement Glass with Vandal Resistant Protective Cover

- Replacement/spare part for ESBG/S
- For use with the ESBG/S but may fit other models



Reset Call Point with Vandal Resistant Protective Cover, Green

- Protective film for safe retention of broken glass
- Test facility, 2 x normally closed/normally open circuits
- Tough clear polycarbonate call point cover
- Fits over flush (35mm) or surface (67mm)



Emergency Break Glass Call Point Cover, Surface, Green

- Tough clear polycarbonate call point cover
- Fits over flush (35mm) or surface (67mm)
- Call points/switch plates using surface box supplied
- Cover avoids accidental activation



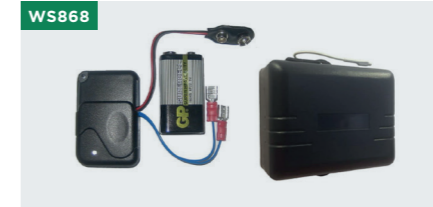
Fire Call Point Cover, Surface, Red

- Tough clear polycarbonate call point cover
- Fits over flush (35mm) or surface (67mm)
- Call points/switch plates using surface box supplied
- Cover avoids accidental activation



Surface Call Point Cover, Surface, White

- Tough clear polycarbonate call point cover
- Fits over flush (35mm) or surface (67mm)
- Call points/switch plates using surface box supplied
- Cover avoids accidental activation



Wireless Switch RX and TX

- RX - Small 2 channel 868MHz receiver. For use with our wireless touch switches and some handheld and desk mount transmitters
- TX - Wired fob with 9V battery to convert a mechanical push pad to wireless



Key Operated Switch, Momentary, Flush, 1 Gang

- Brushed stainless steel, flush mount
- Single pole, momentary
- Keyed alike, key release in both positions
- COM/NO/NC/change-over-contacts



Key Operated Switch, Maintained, Flush, 1 Gang

- Brushed stainless steel, flush mount
- Single pole, momentary
- Keyed alike, key release in both positions
- COM/NO/NC/change-over-contacts



Roller Shutter Door Key Switch

- 3 position, momentary - up/off/ down
- Key only removable in off position
- 2 independent contacts
- Vandal resistant, stainless steel plate



Wait & Enter Indicator 12V DC

- Wait & enter indicator. LED light
- Surface mount
- Adjustable programme, (flashing or solid LED light)
- LED indicator: red and green



Electromagnetic Door Retainer, Flush

- Can be fitted to new or existing doors
- Suitable for left or right-handed doors
- Holding force: up to 32Kg (70lb)
- Adjustable arm ensures correct alignment with magnet



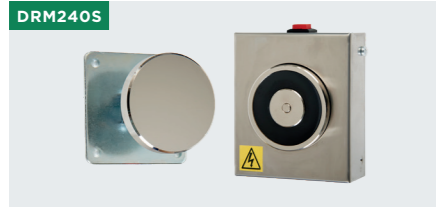
Electromagnetic Door Retainer, Flush

- Can be fitted to new or existing doors
- Suitable for left or right-handed doors
- Holding force: up to 32Kg (70lb)
- Adjustable arm ensures correct alignment with magnet



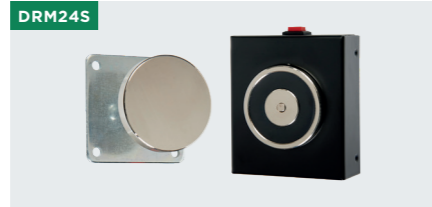
Electromagnetic Door Retainer, Surface

- Can be fitted to new or existing doors
- Suitable for left or right-handed doors
- Holding force: up to 32Kg (70lb)
- Adjustable arm ensures correct alignment with magnet



DRM240S
Electromagnetic Door Retainer, 240V, Surface

- Can be fitted to new or existing doors
- Suitable for left or right-handed doors
- Holding force: up to 32Kg (70lb)
- Adjustable arm ensures correct alignment with magnet



DRM24S
Electromagnetic Door Retainer, 24V, Surface

- Can be fitted to new or existing doors
- Suitable for left or right-handed doors
- Holding force: up to 32Kg (70lb)
- Adjustable arm ensures correct alignment with magnet



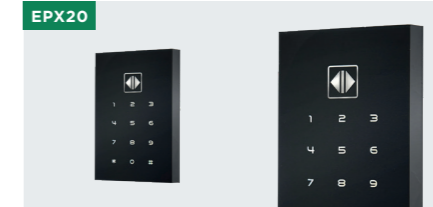
CAP/ES/P
Coded Access Panel - Surface Mounted, Aluminium

- Vandal resistant 20 user code model
- Internal or external use
- Illuminated keypad
- Timed exit circuit, lock override



EPX20/APT
Surface Mounted Kit, Touch Sensitive

- Coded access panel with integral proximity reader
- Panel supplied with 5x proximity cards
- Internal/external use, illuminated display
- Includes electric door lock 12V DC and power supply 12V DC



EPX20
Surface Mounted Panel, Touch Sensitive

- Coded access panel with integral proximity reader
- Panel supplied with 5x proximity cards
- Internal/external use, illuminated display
- 12V DC operation



KRDR/F
Keypad, Stainless Steel, Flush

- Resistant to bad weather conditions and vandalism, IP44 rated
- 255 individual 4 digit opening codes
- 2 function modes: direct opening using keypad or with fob
- Compatible with traditional e-locks



DG800/BT
Combined Proximity & Keypad Access Panel, Bluetooth

- Bluetooth, backlit keypad, die-cast aluminium
- Operating voltage 12V DC • H120 x W79 x D21mm
- IP65 rated, weather resistance, vandal resistance
- Multiple LED display with audible indication



DG800/N
Combined Proximity & Keypad Access Panel

- Backlit keypad, die-cast aluminium
- Operating voltage 12V DC • H120 x W79 x D21mm
- IP65 rated, weather resistance, vandal resistance
- Multiple LED display with audible indication



EPX10/K
Proximity Card Kit

- Operating Voltage
- ABS Plastic • Infra Red Programmer
- Allows up to 2000 Users
- IP65



KRDR/S
Keypad, Stainless Steel, Surface

- Resistant to bad weather conditions and vandalism, IP44 rated
- 255 individual 4 digit opening codes
- 2 function modes: direct opening using keypad or with fob
- Compatible with traditional e-locks



PFRDR/F
Proximity Fob Reader Kit, Flush

- Standalone RFID reader in the unique 125kHz
- Operates 1530 cards, programmed via master card
- Compatible with traditional e-locks
- Kit contains: proximity panel, 12V DC power supply, 3 proximity fobs



PFRDR/S
Proximity Fob Reader Kit, Surface

- Standalone RFID reader in the unique 125kHz
- Operates 1530 cards, programmed via master card
- Compatible with traditional e-locks
- Kit contains: proximity panel, 12V DC power supply, 3 proximity fobs



EASIPROX/BT
Proximity Reader, Standalone, Bluetooth, 2000 Users

- Fully programmable via master card
- ABS plastic, internal or external use
- 3 LED displays with an audible indication
- IP67 rating: stands against extremely heavy weather



EASIPROX/C
Easiprox Coder

- Used with master card/fob for each proximity reader
- Allows full control at different locations/sites using the same coder
- LCD display shows stored card/keyfob no
- Battery operated • Compatible with SCAS/CP, EPX20/APT, SCAS



SCAP/K/P
Coded Access Surface Mounted Panel, Metal

- Vandal resistant, coded access panel with up to 250 user codes
- Internal or external use, IP44 rated
- Stylish chrome and black fascia
- Timed lock circuit



SCAS/P
Surface Mounted Slimline Panel

- Non-volatile memory, internal/external use
- IP65 rated, robust aluminium housing with vandal resistant screw
- Blue backlit keypad with audible response when pressed
- Allows up to 10 pins and 1000 fob/cards



CARD/EP
Proximity Card - Pack of 10 - Slotted

- Additional/replacement proximity cards
- Compatible with: EASIPROX, EPX20, EPX20/APT, SCAS, SCAS/P



FOB/EP

Proximity Fob

- Additional/replacement proximity fob
- Compatible with: EASIPROX, EPX20, EPX20/APT, SCAS, SCAS/P



PFOB

Proximity Fob

- Additional/replacement proximity fob for VDSS & PFRDR range
- Device equipped with 125kHz reader
- Compatible with all ACO devices



CAP/EMK

Coded Access Panel - Surface Mounted, Aluminium

- Internal/external, 20 user codes, illuminated keypad
- Vandal resistant, robust aluminium fascia
- Fail secure and fail open door locking
- Timed exit circuit, two separate circuits, lock override



CAP/ESK

Coded Access Panel with Electric Door Lock 12V DC

- Vandal resistant panel with power supply 12V DC
- Surface mounted
- Voltage free relay contacts
- Fail Secure / Fail Open door locking



SCAS/CP

Surface Mounted Slimline Kit

- Non-volatile memory, internal/external use
- IP65 rated, robust aluminium housing with vandal resistant screw
- Blue backlit keypad with audible response when pressed
- Allows up to 10 pins and 1000 fob/cards



WDB101/B

Wireless Wi-Fi Doorbell (Black Finish)

- IP65 rated
- Wireless doorbell, motion detection
- Stream image to mobile
- Free app, IOS & Android



WDB101/W

Wireless Wi-Fi Doorbell (White Finish)

- IP65 rated
- Wireless doorbell, motion detection
- Stream image to mobile
- Free app, IOS & Android



ADO/S/N

Additional Remote Control for ADO/KOI

- A two-button remote control of high quality and high performance that provides wire-free control of the ADO/KOI door opener and closer



ADO/KOI

Automatic Electric Door Opening/Closing Kit

- For inward or outward opening doors
- Remote control or switch operation
- Single and double swing doors
- Suitable for light to heavy duty cycle applications



SCAP/K

Coded Access Surface Mounted Kit, Metal

- Coded access panel with power supply 12V DC
- Electric door lock 12V AC
- Vandal resistant keypad for surface mounting, IP44 rated
- LED status indicators



WCAM200A/W

Wireless Wi-Fi+C11:D74i Video Security Camera, Motion Detection

- IP65 Internal/External use
- 2 way audio intercom
- 1080P HD, 110 degree wide angle lens
- IR night vision (5m range)
- 16G SD card supplied, Free APP, IOS & Android



MOV14V

Varistor Spike Suppressor

- Spike suppression device often fitted across the coil of a lock to protect the contacts of the controlling device from contact burn
- Round Varistor element with lead
- High surge current ratings up to 8kA



SMF

Surface Mounting Metal Frame

- Surface housing for 1 gang box
- Brushed stainless steel effect
- Metal finish
- H88 x W85 x D40mm

DOOR ENTRY

Audio Door Entry | Video Door Entry |
Door Entry Kits | Door Entry Panels |
Accessories | Spares |



Listed in  **LUCKINS™**

FEATURED PRODUCT

Facial Recognition, Coded Access Panel, Surface mount

- Facial recognition unlocking (capacity up to 300 faces)
- Weather & dust resistance: IP55 • Pin code access unlocking
- Backlit keypad, operating voltage: 12V DC
- Aluminium alloy panel with blush processing
- Capacity up to 10,000 working attendance records



FR/CAP

BEST SELLER

Video Door Entry, Single Station Kit

- 7" colour LCD monitor, metal finish. Suitable for indoor and outdoor use
- Wide angle camera lens, capable of working at low light levels (white LED illumination)
- Volume, contrast and brightness controls on monitor
- Vandal resistant, timed volt free lock release



VID1/HF/CS

FR/CAP



Facial Recognition, Coded Access Panel, Surface mount

- Facial recognition unlocking (capacity up to 300 faces)
- Weather & dust resistance: IP55 • Pin code access unlocking
- Backlit keypad, operating voltage: 12V DC
- Aluminium alloy panel with bluish processing
- Capacity up to 10,000 working attendance records

DPK2S & DPK2F



Door Entry System, 2 Station, Surface

- Ideal for applications that require a single to multi-station audio door entry
- 2 station, 7 core cable
- Aluminium silver finish, external/internal use
- Includes telephone handset and power supply

DPK6S & DPK6F



Door Entry System, 6 Station, Surface

- Ideal for applications that require a single to multi-station audio door entry
- 6 station, 11 core cable
- Aluminium silver finish, external/internal use
- Includes telephone handset and power supply

DPK1S & DPK1F



Door Entry System, 1 Station, Surface

- Ideal for applications that require a single to multi-station audio door entry
- 1 station, 6 core cable
- Aluminium silver finish, external/internal use
- Includes telephone handset and power supply

DPK7S & DPK7F



Door Entry System, 7 Station, Surface

- Ideal for applications that require a single to multi-station audio door entry
- 7 station, 12 core cable
- Aluminium silver finish, external/internal use
- Includes telephone handset and power supply

DPK8S & DPK8F



Door Entry System, 8 Station, Surface

- Ideal for applications that require a single to multi-station audio door entry
- 8 station, 13 core cable
- Aluminium silver finish, external/internal use
- Includes telephone handset and power supply

DPK3S & DPK3F



Door Entry System, 3 Station, Surface

- Ideal for applications that require a single to multi-station audio door entry
- 3 station, 8 core cable
- Aluminium silver finish, external/internal use
- Includes telephone handset and power supply

DPK10S & DPK10F



Door Entry System, 10 Station, Surface

- Ideal for applications that require a single to multi-station audio door entry
- 10 station, 15 core cable
- Aluminium silver finish, external/internal use
- Includes telephone handset and power supply

TT1S & TT1F



Door Entry System Panel, 1 Station, Surface

- 1 station surface mounted replacement panel complete with microphone and speaker
- Brushed aluminium
- H206 x W134

DPK4S & DPK4F



Door Entry System, 4 Station, Surface

- Ideal for applications that require a single to multi-station audio door entry
- 4 station, 9 core cable
- Aluminium silver finish, external/internal use
- Includes telephone handset and power supply

DPK12S & DPK12F



Door Entry System, 12 Station, Surface

- Ideal for applications that require a single to multi-station audio door entry
- 10 station, 17 core cable
- Aluminium silver finish, external/internal use
- Includes telephone handset and power supply

TT2S & TT2F



Door Entry System Panel, 2 Station, Surface

- 2 station surface mounted replacement panel complete with microphone and speaker
- Brushed aluminium
- H231 x W134mm

DPK5S & DPK5F



Door Entry System, 5 Station, Surface

- Ideal for applications that require a single to multi-station audio door entry
- 5 station, 10 core cable
- Aluminium silver finish, external/internal use
- Includes telephone handset and power supply

HT3003W



Handset, White

- Additional/replacement white handset
- For use with DPK and KIDP range

TT3S



Door Entry System Panel, 3 Station, Surface

- 3 station surface mounted replacement panel complete with microphone and speaker
- Brushed aluminium
- H256 x W134mm



Door Entry System Panel, 4 Station, Surface

- 4 station surface mounted replacement panel complete with microphone and speaker
- Brushed aluminium
- H281 x W134mm



Door Entry System Panel, 5 Station, Surface

- 5 station surface mounted replacement panel complete with microphone and speaker
- Brushed aluminium
- H306 x W134mm



Door Entry System Panel, 6 Station, Surface

- 6 station surface mounted replacement panel complete with microphone and speaker
- Brushed aluminium
- H331 x W134mm



Door Entry System Panel, 7 Station, Surface

- 7 station surface mounted replacement panel complete with microphone and speaker
- Brushed aluminium
- H356 x W134mm



Door Entry System Panel, 8 Station, Surface

- 8 station surface mounted replacement panel complete with microphone and speaker
- Brushed aluminium
- H256 x W210mm



Door Entry System Panel, 10 Station, Surface

- 10 station surface mounted replacement panel complete with microphone and speaker
- Brushed aluminium
- H281 x W210mm



Door Entry System Panel, 12 Station, Surface

- 12 station surface mounted replacement panel complete with microphone and speaker
- Brushed aluminium
- H306 x W210mm



Colour Video Door Entry Kit, 1 Way, 7" Handsfree Monitor

- Stainless steel fascia (2mm thick), vandal resistant
- Surface and flush mountable (both boxes supplied)
- 7" hands-free monitor, with its own power supply
- Expandable up to 4 monitors/2 door stations
- Illuminated button/nameplate



Colour Video Door Entry Kit, 2 Way, 7" Handsfree Monitor

- Stainless steel fascia (2mm thick), vandal resistant
- Surface and flush mountable (both boxes supplied)
- 7" hands-free monitor, with its own power supply
- Expandable up to 4 monitors/2 door stations
- Illuminated button/nameplate



Colour Video Door Entry Kit, 6 Way, 7" Handsfree Monitor

- Stainless steel fascia (2mm thick), vandal resistant
- Surface and flush mountable (both boxes supplied)
- 7" hands-free monitor, with its own power supply
- Expandable up to 4 monitors/2 door stations
- Illuminated button/nameplate



Colour Video Door Entry Kit, Keypad, 1 Way

- Stainless steel fascia (2mm thick), vandal resistant
- Surface and flush mountable (both boxes supplied)
- Key pad module, 40 user code capacity+ for 30 timed and 10 toggle operations
- 7" handsfree monitor. Illuminated buttons/nameplate



Colour Video Door Entry Kit, 2 Way, 4" Handset Monitor

- Stainless steel fascia (2mm thick), vandal resistant
- Surface and flush mountable (both boxes supplied)
- 4" handset monitor, with its own power supply
- Expandable up to 4 monitors/2 door stations
- Illuminated button/nameplate



Colour Video Door Entry Kit, 1 Way, 4" Handset Monitor

- Stainless steel fascia (2mm thick), vandal resistant
- Surface and flush mountable (both boxes supplied)
- 4" handset monitor, with its own power supply
- Expandable up to 4 monitors/2 door stations
- Illuminated button/nameplate



Colour Video Door Entry Kit, 3 Way, 4" Handset Monitor

- Stainless steel fascia (2mm thick), vandal resistant
- Surface and flush mountable (both boxes supplied)
- 4" Handset monitor, with its own power supply
- Expandable up to 4 monitors/2 door stations
- Illuminated button/nameplate



Colour Video Door Entry Kit, 4 Way, 4" Handset Monitor

- Stainless steel fascia (2mm thick), vandal resistant
- Surface and flush mountable (both boxes supplied)
- 4" handset monitor, with its own power supply
- Expandable up to 4 monitors/2 door stations
- Illuminated button/nameplate



Colour Video Door Entry Kit, 3 Way, 7" Handsfree Monitor

- Stainless steel fascia (2mm thick), vandal resistant
- Surface and flush mountable (both boxes supplied)
- 7" hands-free monitor, with its own power supply
- Expandable up to 4 monitors/2 door stations
- Illuminated button/nameplate



Colour Video Door Entry Kit, 4 Way, 7" Handsfree Monitor

- Stainless steel fascia (2mm thick), vandal resistant
- Surface and flush mountable (both boxes supplied)
- 7" hands-free monitor, with its own power supply
- Expandable up to 4 monitors/2 door stations
- Illuminated button/nameplate



Colour Video Door Entry Kit, 5 Way, 7" Handsfree Monitor

- Stainless steel fascia (2mm thick), vandal resistant
- Surface and flush mountable (both boxes supplied)
- 7" hands-free monitor, with its own power supply
- Expandable up to 4 monitors/2 door stations
- Illuminated button/nameplate



Colour Video Door Entry Kit, 5 Way, 4" Handset Monitor

- Stainless steel fascia (2mm thick), vandal resistant
- Surface and flush mountable (both boxes supplied)
- 4" Handset monitor, with its own power supply
- Expandable up to 4 monitors/2 door stations
- Illuminated button/nameplate



Colour Video Door Entry Kit, 6 Way, 4" Handset Monitor

- Stainless steel fascia (2mm thick), vandal resistant
- Surface and flush mountable (both boxes supplied)
- 4" handset monitor, with its own power supply
- Expandable up to 4 monitors/2 door stations
- Illuminated button/nameplate



Colour Video Door Entry Kit, Keypad, 1 Way

- Stainless steel fascia (2mm thick), vandal resistant
- Surface and flush mountable (both boxes supplied)
- Key pad module, 40 user code capacity for 30 timed and 10 toggle operations
- 7" handsfree monitor, illuminated buttons/nameplate



Video Door Entry/Coded Access Kit, Colour Monitor

- Additional colour monitor
- 4" handset monitor
- Adjustable volume, brightness and contrast



Audio Door Entry Kit - 1 Station, Surface

- Vandal resistant, digital audio (2 wire)
- Backlit nameplate and button
- Brushed stainless steel fascia (2mm thick)
- IP44 rated, 300m max run
- Magnetic handset retainer



Audio Door Entry Kit - 2 Station, Surface

- Vandal resistant, digital audio (2 wire)
- Backlit nameplate and button
- Brushed stainless steel fascia (2mm thick)
- IP44 rated, 300m max run, magnetic handset retainer



Audio Door Entry Kit - 4 Station, Surface

- Vandal resistant, digital audio (2 wire)
- Backlit nameplates and buttons
- Brushed stainless steel fascia (2mm thick)
- IP44 rated, 300m max run, magnetic handset retainer



Audio Door Entry Kit - 6 Station, Surface

- Vandal resistant, digital audio (2 wire)
- Backlit nameplates and buttons
- Brushed stainless steel fascia (2mm thick)
- IP44 rated, 300m max run, magnetic handset retainer



Audio Door Entry Kit With Coded Panel, 1 Station, Surface

- Brushed stainless steel finish (2mm thick)
- Integral coded access panel • 300m max run
- IP44 rated, vandal resistant, digital audio (2 wire)
- Backlit nameplate and buttons • Magnetic handset retainer



Audio Door Entry Kit With Coded Panel, 2 Station, Surface

- Brushed stainless steel finish (2mm thick)
- Integral coded access panel
- IP44 rated, vandal resistant, digital audio (2 wire)
- Backlit nameplate and buttons, 300m max run
- Magnetic handset retainer



Video Door Entry Kit, 1 Station, Surface

- Stainless steel (2mm thick)
- Vandal resistant, IP44 rated
- Wide angle lens (adjustable), built-in proximity reader
- CAT5E with RJ45 socket and screw terminals



Video Door Entry Kit, 2 Station, Surface

- Stainless steel (2mm thick)
- Vandal resistant, IP44 rated
- Wide angle lens (adjustable), built-in proximity reader
- CAT5E with RJ45 socket and screw terminals



Video Door Entry Kit, 3 Station, Surface

- Stainless steel (2mm thick)
- Vandal resistant, IP44 rated
- Wide angle lens (adjustable), built-in proximity reader
- CAT5E with RJ45 socket and screw terminals



Video/Coded Access Panel, 1 Station, Surface

- Stainless steel (2mm thick)
- Vandal resistant, IP44 rated
- Wide angle lens (adjustable), built-in proximity reader
- CAT5E with RJ45 socket and screw terminals



Video/Coded Access Panel, 2 Station, Surface

- Stainless steel (2mm thick)
- Vandal resistant, IP44 rated
- Wide angle lens (adjustable), built-in proximity reader
- CAT5E with RJ45 socket and screw terminals



INS-UP

Digital audio inside unit with magnetic handset hang-up

- 2 buttons: opening, functional button to control home automatics
- 3 level ringing volume adjustment
- Hold feature – handset can be put on hold without hanging-up
- Home automation: control over external, devices like gates, lights or blind rollers



INS-UP 720 MR

Digital audio inside unit with magnetic handset hang-up

- 2 buttons and door bell function
- 3 level ringing volume adjustment
- Hold feature – handset can be put on hold without hanging-up
- Home automation: control over external, devices like gates, lights or blind rollers



TZ1003

Handset Desk Mounting Kit

- Handset desk mounting kit for HT3003W used in DPK door entry systems



VDMON4

4" Handset For Video System

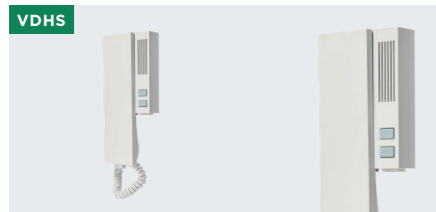
- 4" colour LCD screen, manual monitor on function
- Magnetic handset holder
- Activate camera from monitor for outside observation
- Adjustable volume, brightness and contrast
- Works with CAT5E



VDMONB7

7" Video Monitor, Black

- 7" LCD screen, adjustable volume, brightness and contrast
- Intercom facility between monitors (up to 3)
- Simple set up coding procedure
- Glass LCD screen with touch sensitive switches



VDHS

Audio Handset For Video System, digital

- Magnetic handset hang-up and door bell function for VDSS range
- Clear disturbance free sound, intuitive and easy to use
- Door release without established connection 2 buttons: opening, functional button to control home automatics
- Unit capable to receive internal calls



CDN-I/O

I/O Module Suitable for Audio System

- Input/output module for auxiliary equipment on the ADSS series
- For the control of gates, lights, barriers etc
- 2 x built in outputs



VD1/CK

Video Door Entry Kit, Single Station, Surface mount

- Colour video access, narrow style panels, high quality handset
- 70m distance, up to 3 handsets, up to 2 entrances
- Die-cast metal material
- Call panel: H130 x W55 x D39mm
- Monitor: H243 x W198 x D79mm



VDMONW7

7" Video Monitor, White

- 7" LCD screen, adjustable volume, brightness and contrast
- Intercom facility between monitors (up to 3)
- Simple set up coding procedure
- Glass LCD screen with touch sensitive switches



VID1/ES

Video Door Entry Kit, Single Station

- Suitable for internal and external applications
- Quality video and audio output
- Metal silver finish door panel (surface)
- Volume and brightness controls
- Will operate at low light levels



VID1/HF/CM

Video Door Entry, Colour Monitor

- Additional 7" colour LCD monitor for the VID1/HF/CS single station video door entry
- 221 x 147 x 30mm
- High-quality video and audio output



VID1/HF/CS

Video Door Entry, Single Station Kit, Colour

- 7" colour LCD monitor, metal finish. Suitable for indoor and outdoor use
- Wide angle camera lens, capable of working at low light levels (white LED illumination)
- Volume, contrast and brightness controls on monitor
- Vandal resistant, timed volt free lock release



VCD1/CK

Video Door Entry/Coded Access Kit, 1 Station, Colour

- Narrow door panel, 50 user access codes
- Programmable lock time (1-99 secs)
- Can control up to 2 entrances (additional door panel required)
- Illuminated press buttons on the door panel
- Rain shield (supplied)



DPK1/ES

Door Entry System, 1 Station, Silver

- Brushed aluminium fascia
- Flashing call indicator light on handset
- Electronic call tone, volt free door release
- Surface mounted



DPK501

Door Entry Kit, 1 Station

- Aluminium silver finish front panel
- Illuminated button and name plate
- High quality audio communication
- LED downlit name plate and button
- Expandable up to 3 handsets per station (HT3003W)

DPK502



Door Entry Kit, 2 Station

- Aluminium silver finish front panel
- Illuminated button and name plate
- High quality audio communication
- LED downlit name plate and button
- Expandable up to 3 handsets per station (HT3003W)

NH200TV



Power Supply/Amplifier - up to 100m run

- Replacement part for STR series (DPK range)
- AC/DC power supply/amplifier

PRO-I/O



Module for Video Panels

- Extension module to control home automation and external devices on the ACO VDSS series
- Enables control over home automation, e.g garage doors, barriers, lights or blind rollers

CDN/USB



Interface Cable for App

- Interface cable for use with free downloadable software used to customise functionality such as lock timing
- For use with ADSS & VDSS range
- Compatible with windows operating system
- Free downloadable software used to customise functionality

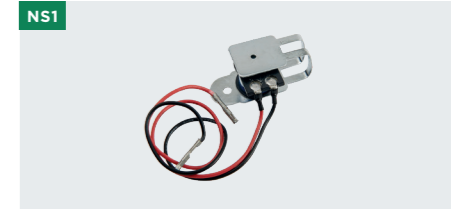
10510



Push Button TT Panel - Spare

- Spare/replacement push button for DPK & TT panel range

NS1



Handset Buzzer

- Replacement part for HT2002/HT3003 handset

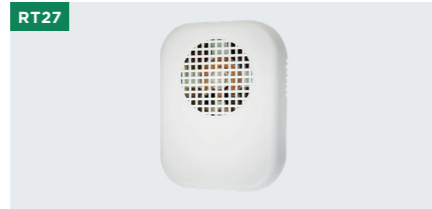
R2007



Variable Tone Inset

- An alternative buzzer for the HT3003W where more than 3 handsets are required per station

RT27



Sounder 12V AC/DC

- Audible sounder, good clear electronic tone
- AC/DC operation (10-18V)
- Surface mounted
- Can be used as an extension sounder on the DPK door entry range

TU1007A



2 Door/Gate Intercommunication/Opening Module

- For interconnecting 2 door/gate panels for communication and locking control to a handset

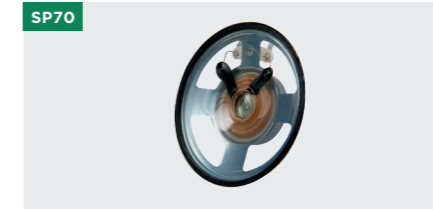
SP50



Speaker, 50mm

- Replacement part for HT2002/HT3003 handset

SP70



Speaker, 70mm

- Replacement speaker for door panel
- 70mm diameter

SPMAT



Stair Pressure Mat, 598 x 168mm

- Pressure mat (598 x 168mm) • Ideal for stairs or shop entrance
- Use with an existing security system or use with a transformer and buzzer to create a simple security alert system
- Multiple mats can be connected together to cover a larger detection area

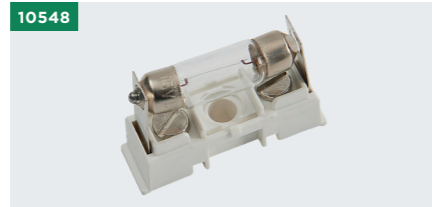
10530



Neon Lamp for Surface TT Panel - Spare

- Spare/replacement lamp for DPK & TT surface panel range to illuminate name plate

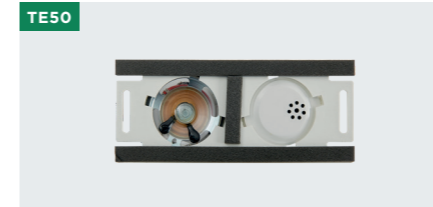
10548



Neon Lamp for Flush TT Panel 3 Station + Units - Spare

- Spare/replacement lamp for DPK & TT flush panel range to illuminate name plate

TE50



Microphone/50mm Speaker Assembly

- Replacement microphone/speaker assembly for door panel
- 50mm diameter speaker

TE70



Microphone/70mm Speaker Assembly

- Replacement microphone/speaker assembly for door panel
- 70mm diameter speaker

TT/MIC

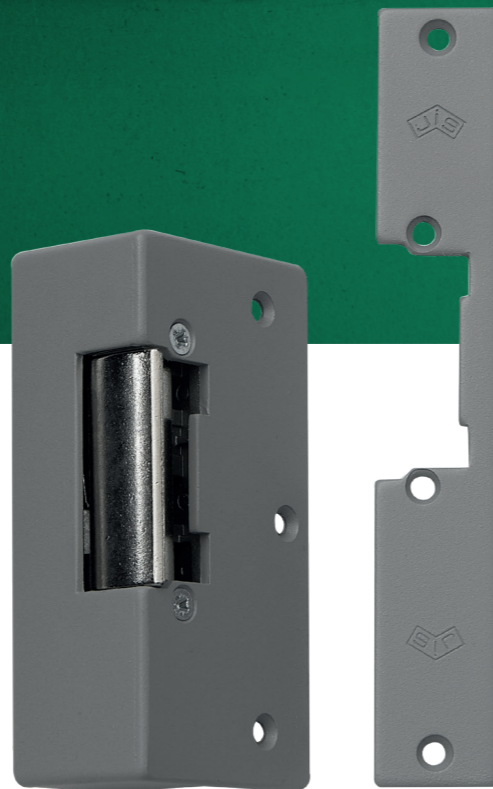


Microphone TT Panel

- Replacement microphone for a TT panel

LOCKS

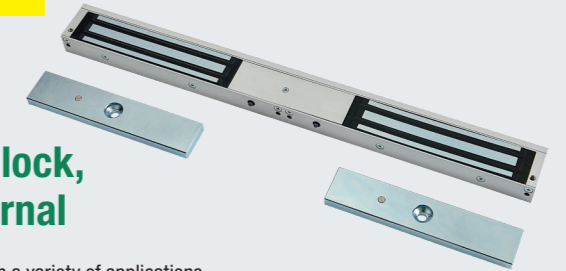
Maglocks | Fail Open/Secure |
Body & Plates |



Listed in  **LUCKINS™**



FEATURED PRODUCT



Double Mini Maglock, 12V/24V DC, Internal

- This type of internal lock is used in a variety of applications, e.g on doors which are part of a fire exit route
- Supplied with mounting bracket
- Internal use only



DMLK

BEST SELLER



Mini Maglock, Internal, 12V/24V DC with brackets

- Fail safe - often used for fire exit route doors. Internal use only
- Suitable for inward/outward opening doors. Z and L brackets supplied
- Holding force 300Kg (600lb)
- 12/24V DC
- Satin anodised aluminium finish



MMLK



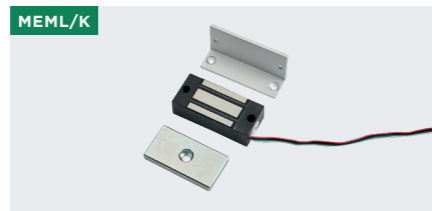
Mini Maglock, Internal, 12V/24V DC with brackets

- Fail safe - often used for fire exit route doors. Internal use only
- Suitable for inward/outward opening doors. Z and L brackets supplied
- Holding force 300Kg (600lb)
- 12/24V DC
- Satin anodised aluminium finish



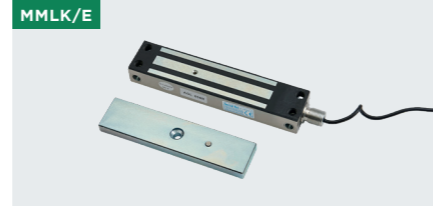
Mini Maglock with Timer, 12V/24V DC

- Fail safe (often used for fire exit route doors)
- Integral timed hold off (adjustable 1-100 secs)
- Suitable for inward/outward opening doors. Internal use only
- Holding force 300Kg (600lb).
- Z and L brackets supplied



Micro Electro-Magnetic Lock, Internal

- For use on cupboards and locker doors in schools, pharmacies, hospitals etc, Compact size 71 x 32 x 21mm



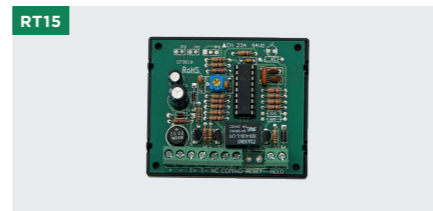
Mini Maglock, External with Z bracket

- This fail safe, stainless steel magnetic lock is suitable for both external/internal use for gates and doors
- Holding force 400Kg (800lb)
- IP67. 12/24V DC
- Z mounting bracket



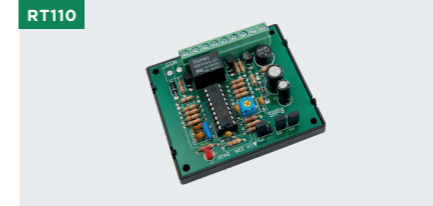
Mini Maglock/Handle, Internal, 12/24V DC

- Fail safe magnetic lock incorporating a door grip
- Internal. Inward/outward opening doors
- Holding force 300Kg (600lb)
- Satin anodised aluminium finish
- Door grip hides magnetic lock on closure



Timer Board For DC Lock, 1-15 seconds

- Timer board for locks and other general purpose devices
- Volt free changeover contacts
- Supply voltage 12/24V DC



Timer Board for DC Lock, 1 sec to 10 min

- Adjustable timer 1 sec to 10 mins
- + or - trigger
- Power input: 12-24V DC
- Dimensions: H63 x W73 x D20mm



Midi Maglock, Internal/External 12V/24V DC

- This fail safe, stainless steel, magnetic lock is suitable for both external/internal use for gates and doors
- Holding force 5.45kg (1200lb)
- IP67 rated
- Weight 5Kg



Electric Door Lock 12V DC

- Fail open lock for both internal/external outward opening doors (mortice type)
- This type of lock releases the door catch when the power is removed from the lock. It is suitable for both hollow aluminium/ metal frames (brackets supplied) and wooden jambs



Shoot Bolt, Surface mounted

- Operates by means of a solenoid
- Suitable for inward/outward opening doors
- Auto door relock - door locking can be delayed by up to 9 seconds
- Power consumption of only 0.3A when locked @ 12V DC
- Door lock status feature



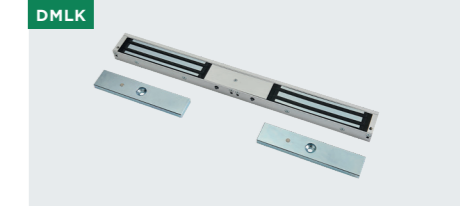
Z Bracket for MM1200

- Aluminium Z and L brackets for MM1200 Midi Maglock



Electric Door Lock, 12V DC, Fail Open

- Electric release
- Operating voltage: 12V DC
- Mortice and rim plates
- Adjustable jaw available



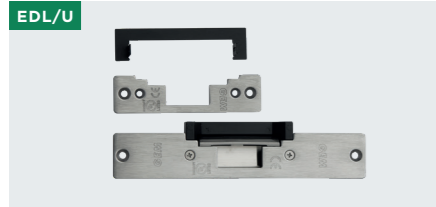
Double Mini Maglock, 12V/24V DC, Internal

- This type of internal lock is used in a variety of applications, e.g on doors which are part of a fire exit route
- Supplied with mounting bracket
- Internal use only



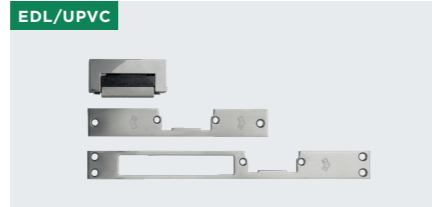
Electric Door Lock 8-12V AC/DC, Fail Secure

- Internal use, suitable for surface/recessed mounted locks
- Euro style, fail secure, mortice or surface
- 12V AC/DC, includes suppression



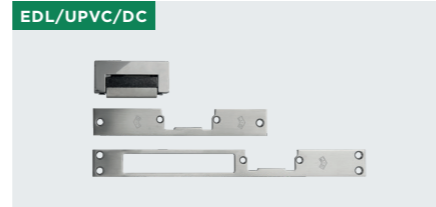
EDL/U
Electric Door Lock, Open/Secure

- An extremely versatile lock release with integral fail open and fail secure functions
- 12 or 24V DC operation
- Suitable for installation on wooden frame doors, opening inwards



EDL/UPVC
Electric Door Lock For UPVC Doors, 12VAC

- Lock for UPVC doors opening inwards
- Two stainless steel flush face plates
- 12V AC operation
- Adjustable lock face plate
- Face plates supplied. Suitable for use with/without deadlock



EDL/UPVC/DC
Electric Door Lock For UPVC Doors, 12VDC

- Lock for UPVC doors opening inwards
- Two stainless steel flush face plates
- 12V DC operation
- Adjustable lock face plate
- Face plates supplied. Suitable for use with/without deadlock



ERB/12VAC/FS
Electric Release Body Only, Fail Secure

- Suits UPVC frames
- 12V AC, 1.08 amps, 8,000 ohms
- Tolerance: 43
- Symmetrical, adjustable jaw



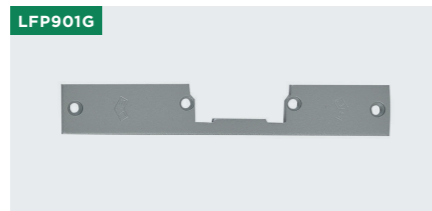
ERB/12VDC/FS
Electric Release Body Only, Fail Secure

- Suits UPVC frames
- 12V DC. Amps: 0.72, 15,000 ohms
- Tolerance: 11-3
- Symmetrical, adjustable jaw



ERB/12VDC/FO
Electric Release Body Only, Fail Open

- Suits UPVC frames
- 12V DC, 0,29 amps, 40,000 ohms
- Tolerance: 11-13
- Symmetrical, adjustable jaw



LFP901G
Small Release Plate Only, Grey

- Small release plate only
- Grey steel
- 159 x 25 x 64.5mm



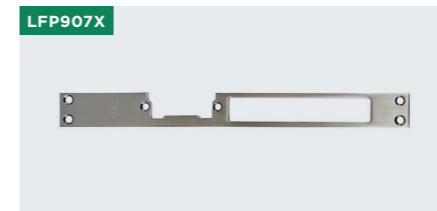
LFP901X
Small Release Plate Only, Stainless Steel

- Small release plate only
- Stainless steel
- 159 x 25 x 64.5mm



LFP920G
Rim Housing, Grey

- Rim housing
- Grey steel



LFP907X
Sash Plate Only, Stainless Steel

- Sash plate only
- Stainless steel



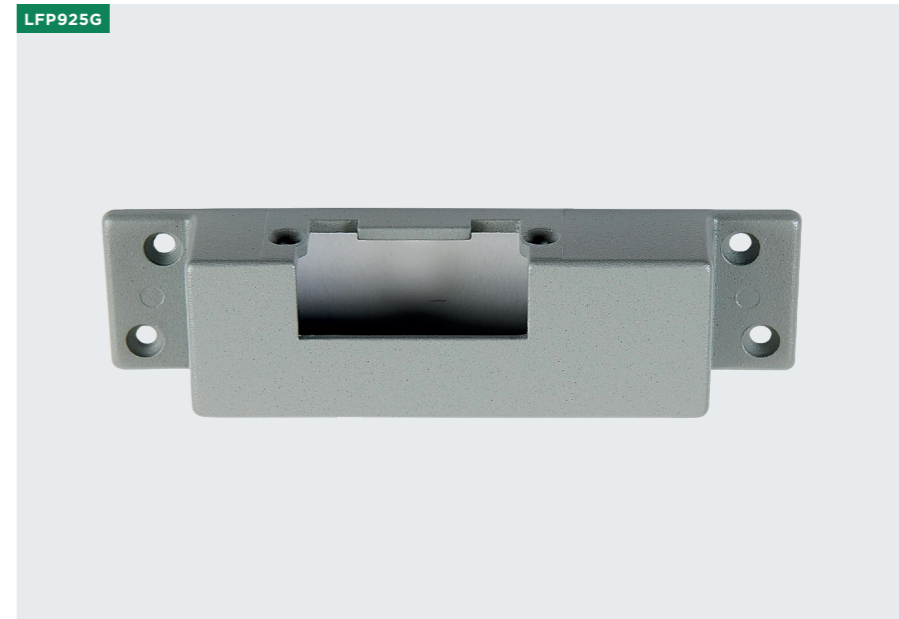
LFP909G
Standard Release Plate Only Grey

- Standard release plate only
- Grey steel
- 130 x 22 x 43mm



LFP909X
Standard Release Plate Only, Stainless Steel

- Standard release plate only
- Stainless steel
- 130 x 22 x 43mm



LFP925G
Surface Housing, Grey

- Surface housing
- Grey steel

ABOUT ORBIS

At ERL we are extremely proud to be in partnership with Orbis. Electro-Replacement Ltd is the sole distributor of Orbis products in the UK and Ireland.

Orbis is an International Brand with sixty-plus years in the Industry. They have manufactured more than 25 million products, supplying to over sixty countries worldwide. With production centres in four European countries and offices in Germany, Italy and Spain, Orbis has a truly global reach and reputation. Their products are manufactured with an overarching view towards quality and robust design.

- 65 years' manufacturing
- Over 25 million products successfully installed
- Delivered in over 60 countries
- Orbis truly are a leading manufacturer



By choosing from the Orbis range, you can be sure you are getting the highest quality products.



TIME SWITCHES



ELECTRIC VEHICLE CHARGERS



CLIMATE CONTROL & HOME AUTOMATION



OUTDOOR LIGHTING MANAGEMENT



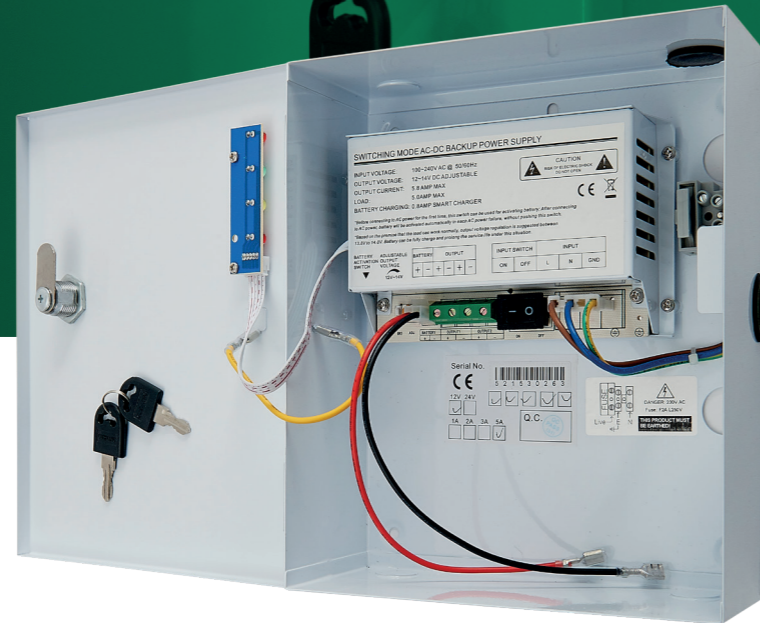
MOTION PRESENCE DETECTORS



ENERGY MEASUREMENT & MANAGEMENT

POWER SUPPLIES

Power Supplies | Fuses |



- AC POWER
- DC OUTPUT
- BATTERY CHARGE

Listed in  **LUCKINS™**

FEATURED PRODUCT

Switch Mode 24 V DC 1A Power Supply

- 220 V AC power input, 24 V DC 1A output
- Metal hinged box
- Deep discharge protection
- LED Indicators
- Key lockable • Battery charging circuit

★★★★★



PS1A/24V/L

BEST SELLER

Switch Mode Power Supply, 1A 12V DC (13.8V)

- 220V AC power input, 12V DC 1A output
- Metal hinged box, key lockable
- Deep discharge protection
- LED indicators
- H392 x W285 x D165

★★★★★



PS1A/12V

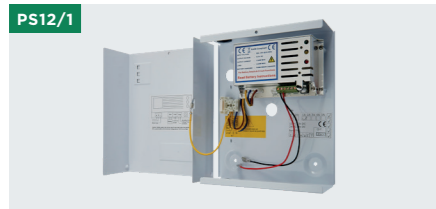
PS1A/12V



Switch Mode Power Supply, 1A 12V DC (13.8V)

- 220V AC power input, 12V DC 1A output
- Metal hinged box, key lockable
- Deep discharge protection
- LED indicators
- H392 x W285 x D165

PS12/1



Switch Mode Power Supply, 1A, 12V (13.8V) DC

- 12V DC switch mode power supply. Battery back up facility
- 1A PSU, 7Ah max (not supplied)
- Full load current at high ambient temperature (+40°C)
- Mains present and fault/fuse blown LED indicators
- Short circuit and mains transient protection

PS24/1



Power Supply, 1A, 24V DC, No Battery Back-Up

- Full load current at a high ambient temperature (+40°C)
- Mains present and fault/fuse blown LED indicators
- Short circuit and mains transient protection
- Suitable for wall mounting (enclosure incorporates knock-outs)

PS5A/12V



Switch Mode Power Supply, 5A, 12V (13.8V) DC

- 7Ah max (not supplied)
- LED indicators
- Deep discharge protection
- Metal hinged box with key lock
- Suitable for wall mounting (enclosure incorporates knock-outs)

PS10A/12V



Switch Mode Power Supply, 10A 12V (13.8V)

- 220V AC power input. 12V DC. 10A output
- Metal hinged box, key lockable
- Deep discharge protection
- LED indicators
- H392 x W285 x D165

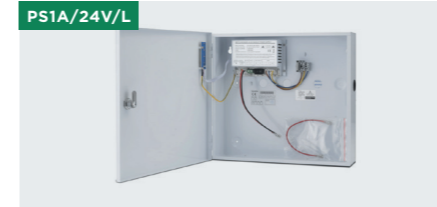
PS24/1BB



Switch Mode Power Supply, 1A, 24V (27.6V) DC

- Full load current at high ambient temperature (+40°C)
- Mains present and fault/fuse blown LED indicators
- Short circuit and mains transient protection
- Suitable for wall mounting (enclosure incorporates knock-outs)
- Batteries 7Ah max (not supplied)

PS1A/24V/L



Switch Mode 24 V DC 1A Power Supply

- 220 V AC power input, 24 V DC 1A output
- Metal hinged box
- Deep discharge protection
- LED Indicators • Key lockable
- Battery charging circuit

PSU24



Power Supply, 24V

- For use with electromagnetic door retainers, for loads not exceeding 0.5 amps

PF5/50



Blister Packed 5Amp Fuses - Pack of 50

- 5A fuses - pack of 50. Blister packed

PS1A25SM12



Switch Mode Power Supply, In-Line, 1.25A, 12V

- For use with a variety of products that require a DC voltage of 12V, either using the adaptor plug or wiring directly to the product
- 12V DC, 1.25A regulated output
- Mains lead (2m approx) with a 3A BS1362 plug
- Fly lead (820mm approx)

CFP



Contractor Fuse Pack

- Our contractor fuse pack contains the most commonly used fuses
- Fuses come in a storage box with spill-proof latches
- Ideal for electrical/electronic engineers who need a selection of commonly used fuses

T4812/N



Multivolt Transformer

- For use with many applications requiring 4, 8 and 12V AC output
- Self-resetting overload protection
- Double insulated
- Surface mounted

PS312



Universal Plug-In Power Supply

- Selectable output voltages: 3, 4, 5, 6, 7.5, 9, 12V DC
- Supplied with 6 types of output lead connectors
- 600mA regulated output
- Reversible polarity
- Indicator LED

PF3/50



Blister Packed 3Amp Fuses - Pack of 50

- 3A fuses - pack of 50. Blister packed.

TIME SWITCHES

- Analogue Time Switches |
- Digital Time Switches | Staircase Timers |
- Astronomical Time Switches |



Listed in  **LUCKINS™**

TIME SWITCHES

FEATURED PRODUCT

Astronomical Time Switches

- Daily updating and easy programming
- Fixed or astronomical operations (Dawn or Dusk)
- All models bluetooth compatible with Mobile App (BT) - Built In - Non (BT) Dongle Available
- Up to 40 daily or weekly programs, Backlit display

★★★★★



ASTRO NOVA CITY BT

BEST SELLER

APT IMM24

- The IMM24 has been specifically developed to cope with the constantly high amperage draw found with Immersion heaters and also the wide variety of domestic or industrial timed operations
- BEAB approved, 30 min tappets
- Three programming positions: automatic, permanent on/off
- Surface mounting box containing 2x cable clamps

★★★★★



IMM24

APT IMM24



- The IMM24 has been specifically developed to cope with the constantly high amperage draw found with Immersion heaters and also the wide variety of domestic or industrial timed operations
- BEAB approved, 30 min tappets
- Three programming positions: automatic, permanent on/off
- Surface mounting box containing 2x cable clamps

Product Code	Specification	Programming
IMM24	230 V AC 50/60Hz, Surface	Daily/30 min
IMM24F	230 V AC 50/60Hz, Flush	Daily/30 min

APT IMM24EC



- The IMM24 has been specifically developed to cope with the constantly high amperage draw found with Immersion heaters and also the wide variety of domestic or industrial timed operations
- BEAB approved, 30 min tappets
- Three programming positions: automatic, permanent on/off
- Surface mounting box containing 2x cable clamps

Product Code	Specification	Programming
IMM24EC	230 V AC 50/60Hz	Daily/30 min

UNO



- DIN rail mount, one module wide
- Three programming positions: automatic, permanent on/off
- Protective clear window helps prevent unauthorised handling
- Lateral dial with easy to program tappets

Product Code	Specification	Programming	Battery Backup
UNO/D	230 V AC 50/60Hz	Daily/15 min	No
UNO/QRD	230 V AC 50/60Hz	Daily/15 min	150 h
UNO/QRS	230 V AC 50/60Hz	Weekly/2 h	150 h

INCA DUO



- DIN rail, two modules wide
- Lateral dial with easy to program tappets
- Two programming positions: automatic and permanent on
- Protective clear window to prevent unauthorised handling

Product Code	Specification	Programming	Battery Backup
INCA/DUO/D	230 V AC 50/60Hz	Daily/15 min	No
INCA/DUO/QRD	230 V AC 50/60Hz	Daily/15 min	100 h
INCA/DUO/QRS	230 V AC 50/60Hz	Weekly/2 h	100 h

SUPRA



- DIN rail mount, 2,5 modules wide
- Front dial with easy to program tappets
- Three programming positions: automatic, permanent on/off
- Protective clear window helps prevent unauthorised handling

Product Code	Specification	Programming	Battery Backup
SUPRA/D	230 V AC 50/60Hz	Daily/15 min	No
SUPRA/QRD	230 V AC 50/60Hz	Daily/15 min	150 h
SUPRA/QRS	230 V AC 50/60Hz	Weekly/2 h	150 h

MINI QRD



- DIN rail, surface or flush/panel mounting
- Front dial is easy to program by movable tappets
- Three programming positions: automatic, permanent on/off
- Sealable window and terminals cover to avoid unauthorised handling

Product Code	Specification	Programming	Battery Backup
MINI/QRD	230 V AC 50/60Hz	Daily/15 min	100 h

MINI T



- DIN rail, surface or flush/panel mount
- Compact design and installation base with precuts for power supply through cable track or tube when installed on surface
- Front dial with easy to program tappets
- Faston Connections 6.3 x 8mm for flush/panel mounting

Product Code	Specification	Programming	Battery Backup
MINI T/D	230 V AC 50/60Hz	Daily/15 min	No
MINI T/QRD	230 V AC 50/60Hz	Daily/15 min	100 h
MINI T/QRS	230 V AC 50/60Hz	Weekly/2 h	100 h

ALPHA



- DIN rail, surface or flush/panel mounting
- Front dial is easy to program by movable tappets
- Three programming positions: automatic, permanent on/off
- Faston Connections 6.3 x 08mm for flush/panel mounting

Product Code	Specification	Programming	Battery Backup
ALPHA/D	230 V AC 50/60Hz	Daily/15 min	No
ALPHA/QRD	230 V AC 50/60Hz	Daily/15 min	100 h
ALPHA/QRD/1	120 V AC 50/60Hz	Daily/15 min	100 h
ALPHA/QRD/12VDC	12 V DC 50/60Hz	Daily/15 min	100 h
ALPHA/QRD/24VAC	24 V AC 50/60Hz	Daily/15 min	100 h
ALPHA/QRS	230 V AC 50/60Hz	Weekly/2 h	100 h
ALPHA/QRS/1	120 V AC 50/60Hz	Weekly/2 h	100 h

CRONO



- DIN rail, surface or flush/panel mount
- Double programming dial for two independent circuits
- Dual programming dial versions have two changeover contacts for daily-daily or daily-weekly programming
- Clear sealable window to prevent unauthorised tampering
- Faston Connections 4.8 x 04mm for flush/panel mounting

Product Code	Specification	Programming	Battery Backup
CRONO/QRDD	230 V AC 50/60Hz	Daily-Daily/15-30 min	100 h
CRONO/QRSD	230 V AC 50/60Hz	Weekly-Daily/2 h-30 min	100 h

DATA MICRO



- Programming by icon menu
- Up to 32 daily and weekly programmes
- Two changeover outputs
- Able to program pulses from 1 second and holiday period of up to 99 days that deactivates existing programmings
- Backup battery of up to 4 years operation

Product Code	Specification	Changeover Contacts
DATA MICRO/2	230 V AC 50/60Hz	2
DATA MICRO/PLUS	230 V AC 50/60Hz	1

DATA LOG



- Installation on DIN rail, two modules wide
- Daily, weekly or seconds programming
- High-contrast backlit display, Interchangeable battery (10 years)
- Easy programming, Up to 40 daily or weekly programs
- Bluetooth models (BT) available with Mobile App

Product Code	Specification	Changeover Contacts
DATA LOG/1	230 V AC 50/60Hz	1
DATA LOG/2	230 V AC 50/60Hz	2
DATA LOG/1/BT	230 V AC 50/60Hz	1
DATA LOG/2/BT	230 V AC 50/60Hz	2

MINI T LOG



- DIN rail and surface mounting, Panel (72 x 72mm)
- Simple text menu programming
- Up to 40 daily or weekly programs
- Changeover contacts with NO and NC output

Product Code	Specification
MINI T LOG	230 V AC 50/60Hz

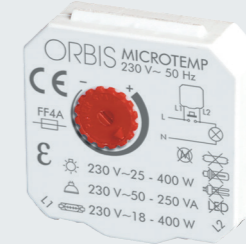
ASTRONOMICAL TIME SWITCHES



- Daily updating and easy programming
- Fixed or astronomical operations (Dawn or Dusk)
- All models bluetooth compatible with Mobile App (BT) - Built In - Non (BT) Dongle Available
- Up to 40 daily or weekly programs, Backlit display

Product Code	Specification	Changeover Contacts
ASTRO NOVA CITY BT	230 V AC 50/60Hz	2
ASTRO UNO BT	230 V AC 50/60Hz	1
ASTRO NOVA CITY	230 V AC 50/60Hz	2
ASTRO UNO	230 V AC 50/60Hz	1

MICROTEMP



- Permits concealed installation between the push button
- Compatible with any push button available in the market
- Valid for incandescent and halogen lamps up to 400 VA

Product Code	Specification	Timing
MICROTEMP	230 V AC 50 Hz	From 30 sec to 10 min

STAIRCASE TIMER T16/G



- An energy saving device used to turn off lighting in corridors and staircases after a pre-set delay
- DIN rail mounted single module units
- Manual control with 2 settings: Automatic operation or on which cancels the timing during repair and maintenance
- Front timing selector

Product Code	Specification	Timing
T16/G	230 V AC 50/60Hz	From 3 min to 30 min

STAIRCASE TIMER T22



- An energy saving device used to turn off lighting in corridors and staircases after a pre-set delay
- DIN rail mounted single module units
- Manual control with 2 settings: Automatic operation or on which cancels the timing during repair and maintenance
- Front timing selector

Product Code	Specification	Timing
T22	230 V AC 50/60Hz	From 45 sec to 7 min

ENERGY MEASUREMENT & MANAGEMENT

Analogue | Digital | Relays |



Listed in **LUCKINS™**



FEATURED PRODUCT

25A Energy Meter

- Allows simple sub-metering of a wide variety of applications to measure electricity consumption and create energy usage awareness
- Single phase
- Accurate kWh measurement



2511SO

BEST SELLER

Digital Energy Meter, 22A

- 230V AC (-15% +10%), 50/60 Hz single phase
- Digital single-phase kilowatt-meter. Two modules width
- Direct measurement up to 22A, Class 2
- Backlit LCD display for good visibility even in darkness



D2221

2511SO



25A Energy Meter

- Allows simple sub-metering of a wide variety of applications to measure electricity consumption and create energy usage awareness
- Single phase
- Accurate kWh measurement

6511SO



65A Energy Meter

- Allows simple sub-metering of a wide variety of applications to measure electricity consumption and create energy usage awareness
- Single phase
- Accurate kWh measurement

D2221



Digital Energy Meter, 22A

- 230V AC (-15% +10%), 50/60 Hz single phase
- Digital single-phase kilowatt-meter. Two modules width
- Direct measurement up to 22A, Class 2
- Backlit LCD display for good visibility even in darkness

D3221



Digital Energy Meter, 32A

- 2 module digital single-phase power meter
- Direct measurement 5 (32)A
- LCD display, 5 digits + 1 decimal non-resettable
- LED consumption indicator

D6521



Digital Energy Meter, 65A

- 230V AC (-20% +15%), 50/60 Hz, 65A
- Single phase, two-module analogue, kilowatt meter
- Direct measurement 10 (65)A, Class 1
- Opto-isolator pulse output communication
- Five-digit + 1 decimal place without zeroing

RS083N



Relay Base, 8 Pin, 2 Pole

- Base for 152E Relay Series (8 pin)
- DIN rail & surface mounting
- High current rating - 10A @ 250V AC/30V DC
- Standard 8 pin configuration
- LED indicator (relays)

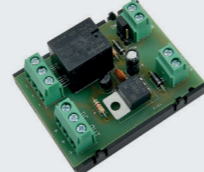
RS113N



Relay Base, 11 Pin 3 Pole

- Base for 152E Relay Series (11 pin)
- DIN rail & surface mounting
- High current rating - 10a @ 250V AC/30V DC
- Standard 8 pin configuration
- LED indicator (relays)

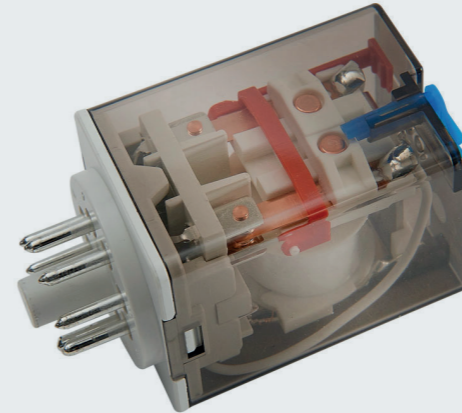
FAR1224



Fire Alarm Relay

- Fire alarm release for locks or similar devices
- Normally Open or Normally Closed contacts • 12-24V DC voltage
- Operates on power being supplied or removed for greater flexibility, i.e when sounders' circuitry operates on N.O alarm circuit
- Compact circuit board 59 x 47 x 20mm

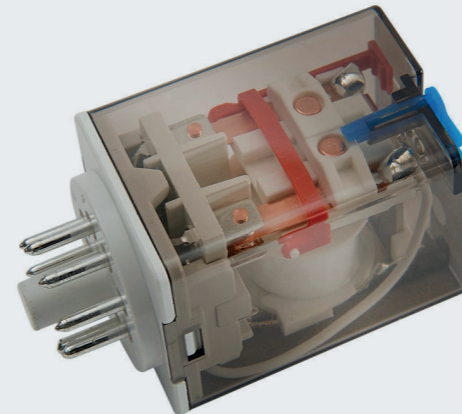
Relays - 8 Pin



Product Code	Pin	Pole	Voltage	Coil
152E/12A	8	2	12V	AC
152E/24A	8	2	24V	AC
152E/110A	8	2	110V	AC
152E/240A	8	2	240V	AC
152E/12D	8	2	12V	DC
152E/24D	8	2	24V	DC

- Allows the user to interface different voltage devices in an electrical system, e.g Door Entry systems using Maglocks
- High current rating - 10A at 250V AC/30V DC
- Two sets of changeover contacts
- LED indicator light
- Manual override facility

Relays - 11 Pin



Product Code	Pin	Pole	Voltage	Coil
153E/24A	11	3	24V	AC
153E/110A	11	3	110V	AC
153E/240A	11	3	240V	AC
153E/12D	11	3	12V	DC
153E/24D	11	3	24V	DC
153E/110D	11	3	110V	DC

- Allows the user to interface different voltage devices in an electrical system, e.g Door Entry systems using Maglocks
- High current rating - 10A at 250V AC/30V DC
- Two sets of changeover contacts
- LED indicator light
- Manual override facility

INDUSTRIAL CONTROLS

Emergency Stop, Stop/Start | Control Stations | Isolators

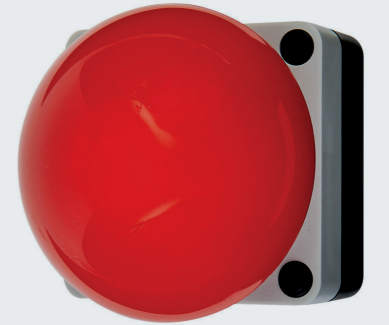


Listed in Trimble
LUCKINS™

FEATURED PRODUCT

Palm/Foot Switch Station, Red, 10A

- IP66 rated, weather and fire resistant housing
- Hand/foot push action (momentary)
- 1 x N.O and 1 x N.C changeover switches fitted
- Rugged polycarbonate construction
- Rated 10V @ 600V. 85 x 69 x 102.5mm



SC1/50/PFS/R

BEST SELLER

Isolators

- Used for isolation of electrical, equipment up to the rated amperage
- Useful for single or 3 phase + neutral applications up to 415V
- IP66 rated. Tough polycarbonate enclosure
- 4x 25mm top/bottom knockouts with 2x 20mm adapters supplied
- The isolators are lockable in the off position
- Self-retaining cover screws



ISO354E/N



Rotary Isolator, 25A, 4 Pole

- Useful for single or 3 phase + neutral applications up to 415V
- IP65 rated, rugged polycarbonate construction with 6x 20mm knockouts • Captive quick-release cover screws
- Switch can be padlocked (6mm) in two positions
- Fitted with 4 pole switch block plus neutral and earth term



Rotary Isolator, 63A, 4 Pole

- Useful for single or 3 phase + neutral applications up to 415V
- IP65 rated, rugged polycarbonate construction with 6x 20mm knockouts • Captive quick-release cover screws
- Switch can be padlocked (6mm) in two positions
- Fitted with 4 pole switch block plus neutral and earth term



Rotary Isolator, 80A, 4 Pole

- Useful for single or 3 phase + neutral applications up to 415V
- IP65 rated, rugged polycarbonate construction with 6x 20mm knockouts • Captive quick-release cover screws
- Switch can be padlocked (6mm) in two positions
- Fitted with 4 pole switch block plus neutral and earth term



Rotary Isolator, 25A, 4 Pole Isolator

- Isolation of electrical equipment up to the rated amperage
- Single or 3 phase + neutral applications up to 415V
- IP65 rated, 4x 20/25mm knockouts
- Accepts padlock hasp size of 6mm
- The rugged polycarbonate body can only be undone in the off position



Rotary Isolator, 32A, 4 Pole Isolator

- Isolation of electrical equipment up to the rated amperage
- Single or 3 phase + neutral applications up to 415V
- IP65 rated, 4x 20/25mm knockouts
- Accepts padlock hasp size of 6mm
- The rugged polycarbonate body can only be undone in the off position



Rotary Isolator, 40A, 4 Pole Isolator

- Isolation of electrical equipment up to the rated amperage
- Single or 3 phase + neutral applications up to 415V
- IP65 rated, 4x 20/25mm knockouts
- Accepts padlock hasp size of 6mm
- The rugged polycarbonate body can only be undone in the off position



Double Push Button On/Off Switch

- IP66. Internal and external use
- 1 x N.O and 1 x N.C changeover switches fitted
- Rated use 3A @ 230V AC
- Rugged ABS enclosure with 2 x 20mm cable gland entries
- Combined start (I), stop (O) push button



Keyswitch - 2 Position, Momentary

- IP66. Internal and external use
- Key switch operation - 2 keys supplied
- 1 x N.O and 1 x N.C changeover switches fitted
- Rated use 3A @ 230V AC
- Rugged ABS enclosure with 2 x 20mm cable gland entries



Red Push Button Switch, Momentary

- IP66. Internal and external use
- Push button (momentary) switch
- 1 x N.O and 1 x N.C changeover switches fitted
- Rated use 3A @ 230V AC
- Rugged ABS enclosure with 2 x 20mm cable gland entries



Rotary On/Off Switch, Maintained

- IP66. Internal and external use
- Rotary (maintained) on/off switch
- 1x N.O and 1x N.C changeover switches fitted
- Rated use 3A @ 230V AC
- Rugged ABS enclosure with 2x 20mm cable gland entries



Palm/Foot Switch Station, Red, 10A

- IP66 rated, weather and fire resistant housing
- Hand/foot push action (momentary)
- 1 x N.O and 1 x N.C changeover switches fitted
- Rugged polycarbonate construction
- Rated 10V @ 600V. 85 x 69 x 102.5mm



Emergency Stop Switch, Push-Twist, 10A

- IP66 rated, weather and fire resistant housing
- Push action twist to release
- 1 x N.O and 1 x N.C changeover switches fitted
- Complies to EN418 rated 10A @ 600V
- Rugged polycarbonate construction with 2x 20mm blind threaded conduit entries



Emergency Stop Switch with Key Release, 10A

- IP66 rated, weather and fire resistant housing
- Push action with key release • Complies to EN418 rated 10A @ 600V
- Rugged polycarbonate construction with 2x 20mm blind threaded conduit entries
- Fitted internally with 2 push switches, one N.O, one N.C latching mechanism (key to reset)



Combined Emergency Stop/Start Command Switch

- Flush head. Contact blocks 1x N.O, and 1x N.C
- IP66 rated, weather and fire resistant housing
- Push action with twist release
- Complies to EN418, rated 10A @ 600V
- Snap-on flange and DIN rail brackets, optional

Isolators

- Used for isolation of electrical, equipment up to the rated amperage
- Useful for single or 3 phase + neutral applications up to 415V
- IP66 rated. Tough polycarbonate enclosure
- 4x 25mm top/bottom knockouts with 2x 20mm adapters supplied
- The isolators are lockable in the off position
- Self-retaining cover screws



Product Code	Amp	Pole
ISO203E/N	20A	3
ISO204E/N	20A	4
ISO353E/N	35A	3
ISO354E/N	35A	4
ISO454E/N	45A	4
ISO634E/N	63A	4

ELECTRIC VEHICLE CHARGERS

Introducing the VIARIS.

The **SMART EV charging solution for electric vehicles.**

- Wall mounted charging station for residential and commercial installations suitable for any type of electrical vehicle.
- Quick and easy to install.
- All required electric protections included.
- Use your mobile to monitor charging or set up scheduled charge times.

All VIARIS COMBI models include a series charge modulator that constantly increases or decreases the consumption of the electric vehicle depending on the rest of the consumption of the home. This achieves the highest recharge in the shortest possible time without exceeding the contracted power.

KEY BENEFITS

1. Charging mode 3, Single Phase & Three Phase
2. Tethered lead or socket outlet models are available
3. One or Two outputs
4. Intelligent VIARIS charge modulator as standard
5. All protections available
6. Energy meter with MID certification

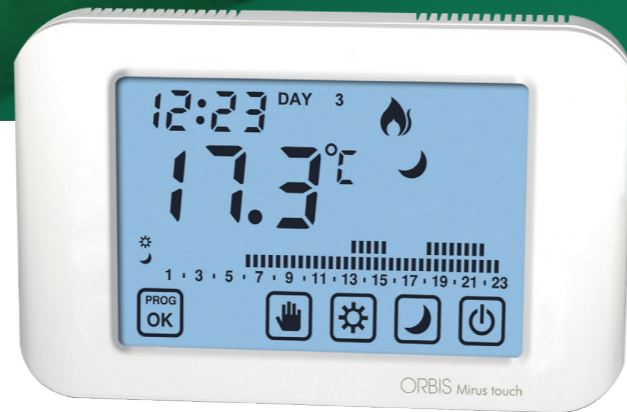


Various options and configurations available

For further information, our specialised sales team and technical assistance service are on call to help with any enquiries you have.

THERMOSTATS & HEATING

Analogue Thermostats |
Digital Thermostats | Froststat |
Pipe Thermostats | Trace Heating |



Listed in Trimble.
LUCKINS™

FEATURED PRODUCT

Touchscreen Thermostat

- Touchscreen, Large backlit display for easy reading
- Adjustable temperature values for Summer/ Winter modes
- Each mode includes three temperature configurations (Comfort, Economy or Anti-freeze)
- Manual regulation operation or standby



VELUS TOUCH

BEST SELLER

Room Thermostat, 16A

- Small, precision ambient thermostat with a compact design
- No power supply needed, allows blocking of temperature to avoid changes
- 3 wire compact thermostat. High amperage contacts
- Suitable for heating or cooling



RT16/3

MIRAS TOUCH



Touchscreen Chronothermostats

- Touchscreen, 7 easy to configure programs
- Easy and intuitive programming with copy/paste function
- Large backlit display for easy reading
- Three adjustable temperature levels, manual mode and temporary manual

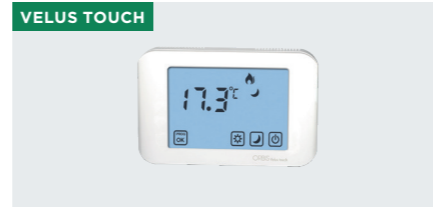
THALOS



Touchscreen Thermostat

- Touchscreen • Easy and intuitive programming
- Large backlit display for easy reading
- Input for night temperature reduction
- Has 3 temperature settings plus anti-icing to avoid frozen pipes

VELUS TOUCH



Touchscreen Thermostat

- Touchscreen, Large backlit display for easy reading
- Adjustable temperature values for Summer/Winter modes
- Each mode includes three temperature configurations (Comfort, Economy or Anti-freeze)
- Manual regulation operation or standby

DRT1



Digital Room Thermostat, 5A

- Easy to use digital thermostat (24hr). Battery operated,
- Flush or surface mounted, accurate temperature control (0.5°C)
- Function displays symbols to indicate on/off status
- Fits directly onto 1 gang flush box (35mm)
- Heating or cooling operation. 2 core cable. 5A contact rating
- Battery operated (2x AAA not supplied)

DRT2



Digital Room Thermostat, Programmable (24Hr, 7 Day), 5A

- 4 in-built programmes per time group, e.g (weekdays-Saturday or Sunday)
- Battery operated. Flush or surface mounted
- Accurate temperature control (0.5°C)
- Function displays symbols to indicate on/off status
- Temporary or permanent override
- 12/24hr clock display time adjustable in 15 minute segments

DRT1RC



Digital Room Thermostat, Radio Controlled, Wire-Free, 5A

- 24hr, 7 day programmable with 4 in-built programmes per time group, e.g (weekdays-Saturday or Sunday)
- Battery operated sensor
- Flush or surface mounted
- Pre wired, mains operated receiver (surface mounted)
- Accurate temperature control (0.5°C)

DRT2RC



Digital Room Thermostat, Programmable, Radio Controlled, Wire-Free, 5A

- 24hr, 7 day programmable with 4 in-built programmes per time group, e.g (weekdays-Saturday or Sunday)
- Battery operated sensor • Flush or surface mounted
- Pre wired, mains operated receiver (surface mounted)
- Accurate temperature control (0.5°C)

RT16/2



Room Thermostat, 16A

- Small, precision ambient thermostat with a compact design
- No power supply needed, allows blocking of temperature to avoid changes
- 2 wire compact thermostat. High amperage contacts
- Suitable for heating or cooling

RT16/3



Room Thermostat, 16A

- Small, precision ambient thermostat with a compact design
- No power supply needed, allows blocking of temperature to avoid changes
- 3 wire compact thermostat. High amperage contacts
- Suitable for heating or cooling

RT16/3N



Room Thermostat with Neon Indicator Light

- 3 wire thermostat with an accelerator, fast response operation
- Room temperature control of heating, cooling or fan devices
- Power supply: 230V AC • Temperature range: 10°C to 30°C
- Current rating – heating: 16A (4)
- Cable requirements: 3 core

FTR/N



10A Froststat

- Control of low temperature switching in internal applications • Accelerator fitted for fast response • 10A contact rating
- Minus 5 to 15°C temperature range • Suitable for garages and other internal applications
- 3 wire thermostat with high amperage contacts
- Can also be used for ventilation control

TRT16/N



Thermostat, Tamper Resistant, 15A

- 3 wire tamper resistant compact thermostat
- High amperage contacts
- Suitable for heating or cooling
- Accelerator fitted for fast response
- 230V AC

CPT16



16A Cylinder/Pipe Thermostat

- 16A rating, temperature range 10-90°C
- Supplied with coiled fixing cable to ensure good contact
- 2 wire compact design, high amperage volt free contacts
- Allows setting of temperature required, e.g ideal for protecting pipes from frost damage

HC1



Digital Central Heating Programmer, 1 Channel

- Digital central heating programmer with built-in thermostat (5-30°C)
- Programmable for 5 + 2 day, 7 day or 24hr
- Up to 30 days battery back-up
- Can be used for many applications including combi/condensing boilers

FTR/E



10A Froststat With Housing (P65)

- 10A Froststat With Housing (P65)

CHC/1



Digital Central Heating/Hot Water Programmer

- Temperature control for both heating/cooling
- 12/24hr clock format, day-light saving
- LED on/off status indicator, program memory backup- 30 day
- Blue backlight. 3 on/off program periods per day
- 3 day - programming modes available - 24hr, 5/2d or 7d

THC/20



Self-Regulating Trace Heating Cable Kit, 20m Drum

- The ideal solution for low power frost protection or temperature maintenance on metallic and non-metallic types
- Self-regulating trace heating cable kit, 2m
- Moisture proof and UV resistant
- Will not overheat or burn out even when overlapped

THC/PCK



Termination Kit for Self-Regulating Trace Heating Cable

- 6x heat shrink sleeves
- 2x wire pins (ferrules)
- Pin-type cable socket
- M25 cable gland
- Connection insulator

THC/2/K



Self-Regulating Trace Heating Cable Kit, 2m

- The ideal solution for low power frost protection or temperature maintenance on metallic and non-metallic types
- Self-regulating trace heating cable kit, 2m
- Moisture proof and UV resistant
- Will not overheat or burn out even when overlapped

THC/5/K



Self-Regulating Trace Heating Cable Kit, 5m

- The ideal solution for low power frost protection or temperature maintenance on metallic and non-metallic types
- Self-regulating trace heating cable kit, 2m
- Moisture proof and UV resistant
- Will not overheat or burn out even when overlapped

LIGHTING CONTROLS

Solar Sensor | Motion Presence Detectors | Photo Electric Controls | Switches |



Listed in  **LUCKINS™**

FEATURED PRODUCT

PIR Motion Detector

- Built-in sun-roof installation using a 65mm drill
- Discreet design and basic functionality to most installations
- Suitable for all types of lamps



DICROMAT

BEST SELLER

Electronic PEC Adjustable Lux

- Single contact from 5 to 300 lux
- Higher degree IP54 protection which allows it to work in extreme conditions
- Activation delay to avoid unwanted switch-on or switch-off due to vehicle headlights, clouds or other factors
- LED operation light. 230V AC. 50Hz



VEGA



Ceiling Multi-Sensor, Surface

- The CIRCUMAT ceiling multi 360° sensor with a plug-in base is ideal for hotels and offices for the automatic control of lighting, able to work with a wide range of lighting loads including LED



PIR Motion Detector

- Simple to install using a 65mm drill. Installation is built-in to the ceiling.
- Discreet design and basic functionality to most installations
- Suitable for all types of lamps



Programmable Motion Detector

- Same technical features as the DICROMAT + with the possibility to be programmed by remote control MANDO CR
- Facilitates the setting of parameters without having to climb a ladder. Ideal for installations with several detectors such as hotels, offices, buildings, etc



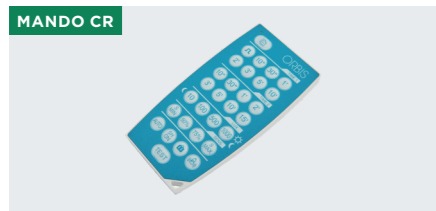
Additional Sensor for Dicromat

- Additional detector compatible with DICROMAT + CR and DICROMAT
- It is ideal for long corridors in hotels and residential buildings
- It streamlines, simplifies and economises the installation



PIR Motion Sensor

- IP55 dust and water jet protection, based on EN60529
- Sensor head rotation to aim it at the detection area. 180° horizontal rotation, 45° vertical rotation



Remote Control for CR range of Proximity Switches

- Remote control for parameter adjustment in CR compatible models
- It streamlines and simplifies both installation and maintenance without the need of a ladder, tools, and without having to remove the detector for its regulator
- With one single CR control you can control all installation detectors
- Adjustable parameters: 1 and 2 output timing, light sensitivity and detection area



Ultrasonic Detector

- High frequency detection (5.8GHz), high performance detects even slight movements
- Can pass through non-metallic surfaces and can be installed hidden over plaster or false ceiling
- Inner and outer corner installation accessory



Key Card Entry/Energy Control Kit, 1 Switch

- Suitable for: (a) door entry (when wired to an appropriate door lock) or (b) switching of lighting, air conditioning etc
- IP65 rated card reader • Neon locator
- 2 separate memories allowing up to 20 cards to be registered (10+10)
- No computer required to program cards



Key Card Entry/Energy Control Kit, 2 Switch

- Suitable for: (a) door entry (when wired to an appropriate door lock) or (b) control of lighting, air conditioning etc
- IP65 rated card reader, neon locator
- 2 separate memories allowing up to 20 cards to be registered (10+10)
- No computer required to program cards



Key Card - Pack of 10

- Pack of 10 cards, credit card size
- For use with KCE1 & KCE2
- Individually coded cards
- Slotted for use with lanyard



Keycard Switch, 16A, White

- Suitable for: (a) door entry (when wired to an appropriate door lock) or (b) control of lighting, air conditioning etc
- IP65 rated card reader, neon locator
- 2 separate memories allowing up to 20 cards to be registered (10+10)
- No computer required to program cards



Keycard Switch, 16A, Polished Brass

- High current rating (16A). Neon locator
- Unique key card size avoids the use of standard plastic cards (1 included)
- Surface or flush mountable (1 gang size)
- Additional key cards available (KCS/SK)



Keycard Switch, 16A, Polished Chrome Finish

- High current rating (16A). Neon locator
- Unique key card size avoids the use of standard plastic cards (1 included)
- Surface or flush mountable (1 gang size)
- Additional key cards available (KCS/SK)



Keycard - Pack of 10

- Pack of 10 key cards to be used with the KCS key card switch range
- Card size L80mm x W45mm



Dimmer Switch, Mains - 1000 Watt, White

- Suitable for mains lighting or electronic lighting transformers
- Control of resistive loads up to 1000W
- High wattage, single gang. 1 or 2 way switching
- Matt chrome fascia plate

DM8/C



Dimmer Switch, Mains - 1000 Watt, Chrome

- Suitable for mains lighting or electronic lighting transformers
- Control of resistive loads up to 1000W
- High wattage, single gang. 1 or 2 way switching
- Matt chrome fascia plate

SD1500



Slide Dimmer Mains 1500W Brushed Aluminium Finish

- Smooth, calibrated slide operation
- Compatible LED, low energy, halogen, low voltage and neon lighting
- Power handling capacity 1500W (surface mounting), 1200W (flush mounting)
- Panel mounted fuse and LED indicator

VEGA



Electronic PEC Adjustable Lux

- Single contact from 5 to 300 lux
- Higher degree IP54 protection which allows it to work in extreme conditions
- Activation delay to avoid unwanted switch-on or switch-off due to vehicle headlights, clouds or other factors
- LED operation light. 230V AC. 50Hz

PEC1000/EL



Electronic PEC Kit

- Photo-electric cells are designed to automatically switch lights on at dusk and off at dawn
- Pre-calibrated to switch at 70 lux ensures that it operate during night hours and ull weather conditions
- PEC units incorporate a delay factor to ensure that sudden lighting (such as car headlights), do not deactivate the light

T14/EL



Electronic PEC Head (for PEC1000/EL)

- Replacement head for PEC1000/EL

P42E



Two Part Photocell 70Lux

- 2 part photocell designed for street and amenity lighting applications
- 70 lux switching level and works with inductive and resistive loads
- Integral "Press to Test" switch ideal where regular testing is required
- Low power consumption • Compact remote detector

PCM1000



Nitelighter PEC Head

- Miniature photocell designed for street and amenity lighting applications
- 70 lux switching level and works with inductive and resistive loads
- Ideal for applications where space is limited

P42D



P42D for P42E only

- Replacement head for P42E only

P12RE



Two Part Photocell Light Sensor

- Designed for street and amenity lighting applications, LED, Halogen or discharge lighting
- 70 lux switching level and works with inductive and resistive loads
- Low power consumption. 300mm length lead from sensor head

BS4103/N



Solar Sensor Light 1000/150/50 Lumens

- Adjustable lumens 50, 100, 1000. 5m movement sensor/ 120°
- IP65, optimised for UK weather, 7 nights lighting time
- 3 operation modes. 9 hrs charge time

ASSISTANCE ALERT

Alert Kits | Toilet Alarm Systems |
Loop Systems | Beam Kits |
Intercoms |



Listed in  **LUCKINS™**

FEATURED PRODUCT

Entry Alert Kit, Wireless (Reflective Beam)



- Reflected beam operation wireless standalone beam kit. 100m range
- Chime/siren sounder operates when beam path broken
- Siren time adjustable, 3 to 30 seconds
- Beam length max 7m. Internal/external. IP55 sensor



EPRB/WK

BEST SELLER

Deluxe Toilet Alarm System



- Allows up to 10x DIS1/C4A to be networked
- Displays the activated call point(s)



DIS1/C4A



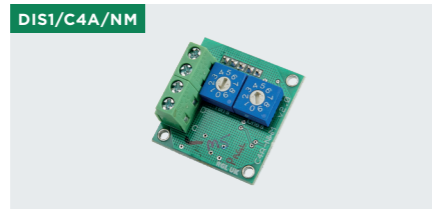
DIS1/C4A

- Allows up to 10x DIS1/C4A to be networked
- Displays the activated call point(s)



DIS1/C4A/IND

- Call for assistance indicator with powerful sounder
- Bright LED indication
- Only compatible with C4A range
- 85 x 85mm



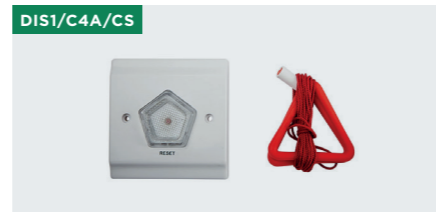
DIS1/C4A/NM

- Networking accessory for the disabled toilet alarm system (DIS1/C4A)



DIS1/C4A/BAT

- 9V NiMH rechargeable battery for the DIS1/C4A



DIS1/C4A/CS

- Pull for assistance cord
- Red pull cord - 2 red handles
- 3 metre cord
- Only compatible with C4A range



DIS1/C4A/RP

- Call for assistance pull cord
- Red pull cord - 2 red handles
- 3 metre cord
- 85 x 85mm



DIS10/C4A/NP

- Allows up to 10x DIS1/C4A to be networked
- Displays the activated call point(s)



SZAK1/C4A

- Expandable, simple to install - 2 wire
- Re-chargeable battery back-up (optional)
- Constant sounder and flashing light alarm



SZAK4/C4A

- Yellow call point - resettable (non-glass)
- Simple to install - 2 wire
- Constant sounder and flashing light alarm
- Wireless operation can be enabled by use of a WS433 switcher



DIS/RCPK

- For use with many disabled toilet alarms
- Red pull cord. 3m. 2x triangular red pull handles
- Anti-ligature device (to reduce risk of strangulation)
- Replacement PCB adaptor (C4A range)



SZAK2/C4A

- Single zone Kit. Large red call button. IP66 rated
- Simple to install - 2 wire
- Constant sounder and flashing light alarm
- Several call points may be connected to one control panel



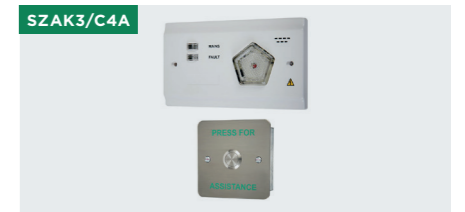
SZAK5/C4A

- This Kit offers a simple but effective method of calling for assistance or raising an alarm
- Momentary switch, simple to install - 2 wire
- Constant sounder and flashing light alarm
- Several call points may be connected to one control panel



DIS/RP/N

- Replacement reset point with sounder for DIS1/N
- Allows for the cancellation of a call alarm to be done at source
- Flush or surface mounting



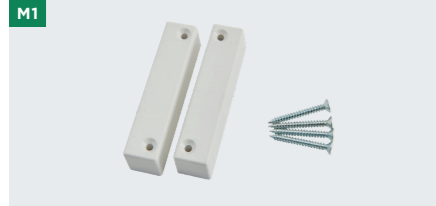
SZAK3/C4A

- A simple but effective method of calling for assistance or raising an alarm by audible and visual indication
- Expandable, simple to install - 2 wire
- Re-chargeable battery back-up (optional)
- Constant sounder and flashing light alarm



SZAK/C4A/PSU

- 230V AC operation, 2 gang panel
- Relay output for additional devices
- Constant sounder and flashing light alarm



M1
Additional Call Point for SZAK5/C4A

- Normally open/normally closed contacts
- Ideal for security applications
- Additional/spare switch
- Suitable for use with SZAK5/C4A



FS-2
Wireless Intercom Kit

- Up to 2km range (line of sight)
- Loudspeaker headphone socket input (3.5mm)
- Licence exempt, digital display, volume control
- High quality speech, 99 pre-programmed channels
- Lithium battery and mains adaptor supplied



FS-25
Additional Wireless Intercom Stations

- Up to 2km range (line of sight)
- Loudspeaker headphone socket input (3.5mm)
- Licence exempt. Digital display, volume control
- High quality speech, 99 pre-programmed channels
- Lithium battery and mains adaptor supplied



EPRB/K
Entry Alert Kit (Reflective Beam)

- Beam length max 7m. 12V DC operation
- 10m inter-connecting cable supplied
- Adjustable speaker and siren/bell - adjustable 3-30 seconds
- normally off switch, easy to install (brackets supplied)
- Internal use only



PRB/K
Reflective Photocell Beam Kit

- Easy to set up. Large 80mm diameter reflector
- Beam length max. 14m. Pre-wired 2m cable
- Wide voltage range. Adjustable sensitivity and response
- Only requires connection to photocell volt free contacts



PLS
Portable Loop Amplifier

- Designed specifically to aid communication with hearing-impaired people who have the "T" position on their hearing aid
- Simple, neat solution, lightweight
- Built-in microphone and rechargeable battery (4hrs usage)
- Battery status and operation LED display
- Microphone input for accessories



PBK
Entry Alert Kit

- Transmitter and receiver create an infrared beam up to 20 metres
- Alarms if someone moves through the beam
- Three volume level settings and alarm tones



KIDP/2
Kitchen Call Kit, 2 Station

- Allows hands free conversation - 2 station
- Ideal for commercial kitchens and restaurants
- Adjustable volume, surface mounted panel
- Expandable up to 3 handsets



CM-211MK/2
Digital Intercom System - 2 Way Starter Kit

- Master to Master system
- Desk or wall mounting, hands free operation
- Good speech quality, simultaneous two-way speech
- Electronic call tone, speech and call tone volume control
- Expandable up to 12 stations



EPRB/S
Additional Speaker Kit for EPRB/K and EPRB/WK

- Max 2 extension kits per beam
- Integral on/off switch
- Fitted 10m lead with phono plug
- Brackets and screws supplied



EPRB/WK
Entry Alert Kit, Wireless (Reflective Beam)

- Reflected beam operation wireless standalone beam kit. 100m range
- Chime/siren sounder operates when beam path broken
- Siren time adjustable, 3 to 30 seconds
- Beam length max 7m. Internal/external. IP55 sensor



KIDP
Kitchen Call Kit

- Allows hands free conversation - 1 station
- Ideal for commercial kitchens and restaurants
- Adjustable volume, surface mounted panel
- Expandable up to 3 handsets

PAGES 74-77

CABLE MANAGEMENT

Cable Protect | Network Cables | Outlet plates |



Listed in  **LUCKINS™**



FEATURED PRODUCT

Double Wallplate with Cable Entry

- Double flush outlet with brushes, 50mm x 100mm
- White plate/black brushes
- Facilitates new and tidy cable management through walls
- Extra deep surface box available - PATBOX47

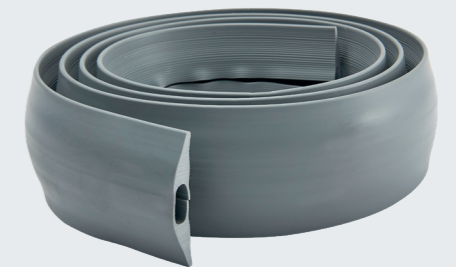


WPBB100

BEST SELLER

Cableprotect, Grey - 2m pack

- Safely cover cables to reduce trip hazards and protect cables
- Pre-split base for easy insertion and removal of cables
- Easily cut to length
- Abrasion resistance, odourless and fire resistant

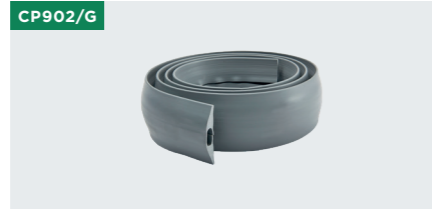


CP902/G



Cableprotect, Grey - 2m pack

- Safely cover cables to reduce trip hazards and protect cables
- Pre-split base for easy insertion and removal of cables
- Easily cut to length
- Abrasion resistance, odourless and fire resistant



Cableprotect, Grey - 2m pack

- Safely cover cables to reduce trip hazards and protect cables
- Pre-split base for easy insertion and removal of cables
- Easily cut to length
- Abrasion resistance, odourless and fire resistant



Cableprotect, Grey - 2m pack

- Safely cover cables to reduce trip hazards and protect cables
- Pre-split base for easy insertion and removal of cables
- Easily cut to length
- Abrasion resistance, odourless and fire resistant



Cableprotect, Grey - 9m roll

- Safely cover cables to reduce trip hazards and protect cables
- Pre-split base for easy insertion and removal of cables
- Easily cut to length
- Abrasion resistance, odourless and fire resistant



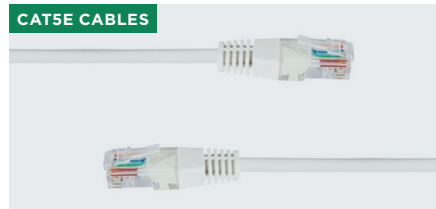
Cableprotect, Grey - 9m roll

- Safely cover cables to reduce trip hazards and protect cables
- Pre-split base for easy insertion and removal of cables
- Easily cut to length
- Abrasion resistance, odourless and fire resistant



Cableprotect, Grey - 9m roll - CP1609/G

- Safely cover cables to reduce trip hazards and protect cables
- Pre-split base for easy insertion and removal of cables
- Easily cut to length
- Abrasion resistance, odourless and fire resistant



Cat 5E Cables

- High quality RJ45 ethernet cable for connecting your LAN equipped devices
- Fully moulded plug
- For networking or ADSL

Product Code	Colour	Length
CAT5E/05W	White	0.5m
CAT5E/1W	White	1.0m
CAT5E/2W	White	2.0m
CAT5E/3W	White	3.0m
CAT5E/5W	White	5.0m
CAT5E/10W	White	10.0m
CAT5E/15W	White	15.0m
CAT5E/20W	White	20.0m



Single Wallplate with Cable Entry

- Single flush outlet with brushes, 50mm x 50mm
- White plate/black brushes
- Facilitates new and tidy cable management through walls
- Extra deep surface box available - PATBOX47



Single Wallplate with Cable Entry

- Single flush outlet with brushes, 50mm x 50mm
- White plate/white brushes
- Facilitates new and tidy cable management through walls
- Extra deep surface box available - PATBOX47



Single Wallplate with Cable Entry

- Single flush outlet with brushes, 50mm x 50mm
- Black plate/black brushes
- Facilitates new and tidy cable management through walls
- Extra deep surface box available - PATBOX47



Double Wallplate with Cable Entry

- Double flush outlet with brushes, 50mm x 100mm
- White plate/black brushes
- Facilitates new and tidy cable management through walls
- Extra deep surface box available - PATBOX47



Double Wallplate with Cable Entry

- Double flush outlet with brushes, 50mm x 100mm
- Black plate/black brushes
- Facilitates new and tidy cable management through walls
- Extra deep surface box available - PATBOX47



Double Wallplate with Cable Entry

- Double flush outlet with brushes, 50mm x 100mm
- White plate/white brushes
- Facilitates new and tidy cable management through walls
- Extra deep surface box available - PATBOX47

CLOCKS, TOOLS, SAFETY WEAR & AV

Safety Workwear | Tools |
Clocks | TV Accessories |



Listed in  **LUCKINS™**

FEATURED PRODUCT

High Contrast, Wall Clock, 30cm, Yellow

- Colours used are ideal for those with sight limitations
- Oversized with distinct hands for easy reading
- Displays days, date and month in UK format
- Easy to set with quartz movement



CO1614/YSQ

BEST SELLER

Safety Glasses W/Twin LED Light (3 Lumens per light)

- Clear anti-fog lens with black frame and pivoting LED temples
- Up to 50 hours of use before replacing batteries
- Rubber temple tips and nose pads
- High impact, scratch resistant polycarbonate lens provides 99% UVA/B/C protection



LEDEW



Bump Cap, 5cm Peak, Black/Grey

- Provides protection from bumps and scrapes
- ABS vented shell with soft inner foam cushion
- Adjustable sizing with reflective piping to peak and sides
- CE EN812:2012 compliant
- Washable polycotton



Safety Glasses W/Twin LED Light (3 Lumens per light)

- Clear anti-fog lens with black frame and pivoting LED temples
- Up to 50 hours of use before replacing batteries
- Rubber temple tips and nose pads
- High impact, scratch resistant polycarbonate lens provides 99% UVA/B/C protection



Commercial Clock, 230mm dia

- Radio controlled for split second accuracy
- Automatic set and updated
- Full numbered dial
- Plastic case and lens
- Requires 1x AA battery (not supplied)



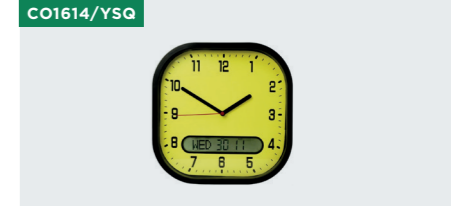
ACCTIM Commercial Clock, 300mm dia, 12/24 Hour

- Quartz movement
- Battery operated (1x AA not supplied)
- White plastic case and plastic lens
- Sweep second hand



ACCTIM Commercial Clock, 355mm dia, 12/24 Hour

- Quartz movement
- Battery operated (1x AA not supplied)
- White plastic case and glass lens



High Contrast, Wall Clock, 30cm, Yellow

- Oversized with distinct hands for easy reading
- Displays days, date and month in UK format
- Easy to set with quartz movement



ACCTIM Radio Controlled Clock, 250mm dia, 12 Hour Dial

- Radio controlled for increased accuracy and automatic summer/winter setting
- Tuned to UK's atomic clock transmitter
- Brushed aluminium case and glass lens
- Sweep second hand
- Battery operated (1x AA not supplied)



ACCTIM Radio Controlled Clock, 225mm dia, 12/24 Hour Dial

- Radio controlled for increased accuracy and automatic summer/winter setting
- Tuned to UK's atomic clock transmitter
- Brushed aluminium case and glass lens
- Sweep second hand
- Battery operated (1x AA not supplied)



ACCTIM Commercial Clock, 255mm dia, 12/24 Hour

- Quartz movement
- Battery operated (1x AA not supplied)
- White plastic case and lens
- Sweep second hand



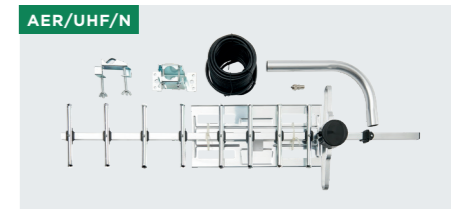
High Contrast, Wall Clock, 30cm, White

- Oversized with distinct hands for easy reading
- Displays days, date and month in UK format
- Easy to set with quartz movement



32 Element Aerial Kit

- Complete TV aerial kit suitable for outdoor or loft installations
- Suitable for receiving Freeview and other digital signals
- Ideal for use as a primary aerial or can be used as a secondary aerial to connect an additional TV
- Suitable for loft or wall mounting



10 Element Aerial Kit

- Complete TV aerial kit suitable for outdoor or loft installations
- Suitable for receiving Freeview and other digital signals
- Ideal for use as a primary aerial or can be used as a secondary aerial to connect an additional TV
- Suitable for loft or wall mounting



Radio Controlled Clock, 255mm dia, 12/24 Hour, White

- Radio controlled for increased accuracy and automatic summer/winter setting



ACCTIM Radio Controlled Clock, 300mm dia, 12/24 Hour

- Radio controlled for increased accuracy and automatic summer/winter setting
- Tuned to UK's atomic clock transmitter
- White metal case and glass lens
- Sweep second hand
- Battery operated (1x AA not supplied)



ACCTIM Commercial Clock, 300mm dia, 12/24 Hour

- Quartz movement
- Battery operated (1x AA not supplied)
- Black plastic case and plastic lens
- Sweep second hand



Aerial Splitter, 1 in 2 out

- 1 in 2 out aerial splitter for co-axial cable



4 Way Control Box

- A fully integrated TV, video, satellite, radio and CCTV distribution system
- Normally placed in the loft but similarly at home in a utility room or under the stairs
- Suitable for up to 4 TVs
- The Loftbox has 6 inputs, inputs combined into one single down cable



8 Way Control Box

- A fully integrated TV, video, satellite, radio and CCTV distribution system
- Normally placed in the loft but similarly at home in a utility room or under the stairs
- Suitable for up to 8 TVs
- The Loftbox has 6 inputs, inputs combined into one single down cable



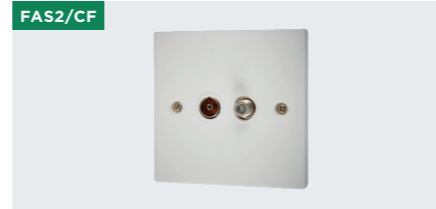
EYE/D
Digieye Remote Control Sensor

- The EYE/D is designed to remotely control your SKY set-top box from another location via co-ax, anywhere within your home
- Compatible with UK digital receivers with an RF-out 2 output
- Note: remote control must operate within 30-40kHz range



SIG2
Digital TV Distribution Amplifier, 1 in 2 out

- Distributes TV or radio signals to two locations
- Compatible with aerials & UK digital satellite receivers with RF-out 2
- Control the functions of the satellite receiver from secondary locations by using the receivers remote control and a digieye (EYE/D)



FAS2/CF
Twin 1x F Type & 1x Co-axial Socket

- Twin 1x F type & 1x co-axial socket
- For SKY or SKY+ installations
- White plastic screw terminals
- Co-axial socket and an F socket outlet



LJ3/6A
Single Flush Extension Socket

- Telephone extension socket to connect with master socket
- Screw terminals



MOD/BT
BT Socket (FAS3/SH)

- BT slave socket for creating a signal distribution system (for use with FAS3/SH)
- Easily clips into the FAS3/SH
- Terminate using our IDC/M punch down tool



MOD/RJ45
RJ45 Socket (FAS3/SH)

- 1 gang ethernet socket
- RJ45 ethernet socket for creating a signal distribution system (for use with FAS3/SH)
- Easily clips into the FAS3/SH
- Terminate using our IDC/M punch down tool



FAS3/SH
Shielded Triple Co-axial Socket

- BT slave socket for creating a signal distribution system (for use with FAS3/SH)
- Easily clips into the FAS3/SH
- Terminate using our IDC/M punch down tool



CFP1
Co-Axial Plug RG6 F Type

- F type screw connector suitable for domestic terrestrial, cable, and satellite TV installations where the delivery of very high frequency information is required
- All metal body
- F plug ensures solid connection between cable and plug



MCP
Co-Axial Plug, Male

- Co-axial plug, male, chrome



MOD/UHF
UHF Socket (FAS3/SH)

- 1 gang co-axial socket
- UHF phono socket for creating a signal distribution system (for use with FAS3/SH)
- Easily clips into the FAS3/SH



HS01/NB
Hole Cutter, Multi-size, 30-163mm

- Adjustable radius arm (30mm -163mm)
- Designed for cutting holes in plywood, plasterboard and acrylic sheets up to 25.4mm thick
- Fitted with transparent cowl to collect dust and debris
- Counter balance weights to reduce vibration included



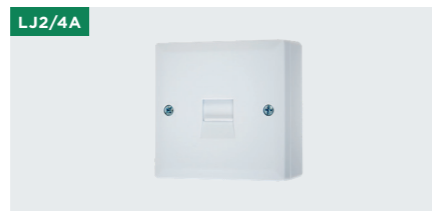
HSB/4D
Universal Blade, Carbide Tip - Replacement

- Spare/replacement universal blade for HSO range of hole cutters



MFP
Co-axial Plug, Female, Chrome

- Co-axial plug, female, chrome



LJ2/4A
Single Surface Master Socket

- A master socket is the first socket where the telephone line enters a property and broadband signal is at its strongest
- All other extensions and sockets are then connected to it
- Screw terminals



LJ2/6A
Single Surface Extension Socket

- Telephone extension socket to connect with master socket
- Screw terminals



MT1
Digital Multimeter with Shock Resistant PVC Holster

- Measures voltage, current and resistance
- Supplied with test leads, holster and battery
- 19 testing ranges, 7 functions
- Compact size 126 x 70 x 29mm / large LCD display (0.5")
- Complies to EN 61010-1: 2010



IDC/M
Punch Down Tool

- Punch down tool for telephone and computer network installations terminates wire and cuts off excess

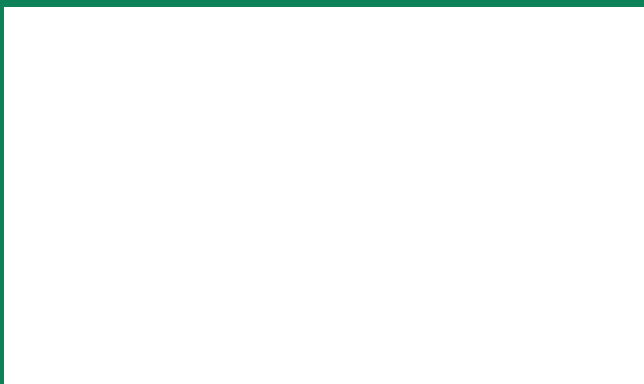


CAM5
Flexi Inspection Camera, 2.4" LCD

- 2.4" TFT screen. Water resistant camera head
- 1m (approx) flexible camera lead with 10mm dia probe head
- Video-out connection cables allow real time viewing or video recording
- Powered by 4x AA batteries (supplied)
- Housed in a protective carry case

ERI[®]

Est. 1971



All goods sold subject to Standard Conditions of Sale. Our policy is one of continuous improvement and we reserve the right to alter product specifications in this catalogue.

All information in this catalogue is given in good faith and believed to be correct at the time of publication January 2020.

E&O.E. © Copyright of Electro-Replacement Limited 2020.

Electro-Replacement Limited

1 Moor Park Industrial Centre,
Tolpits Lane, Watford,
Herts WD18 9EU

Sales Orders

T: 01923 255344

E: sales@electroreplacement.com

F: 01923 255829

Technical Advice Service

Monday to Thursday

T: 01923 220277

E: technical@electroreplacement.com

W: www.electroreplacement.com

Visit our website for more information