



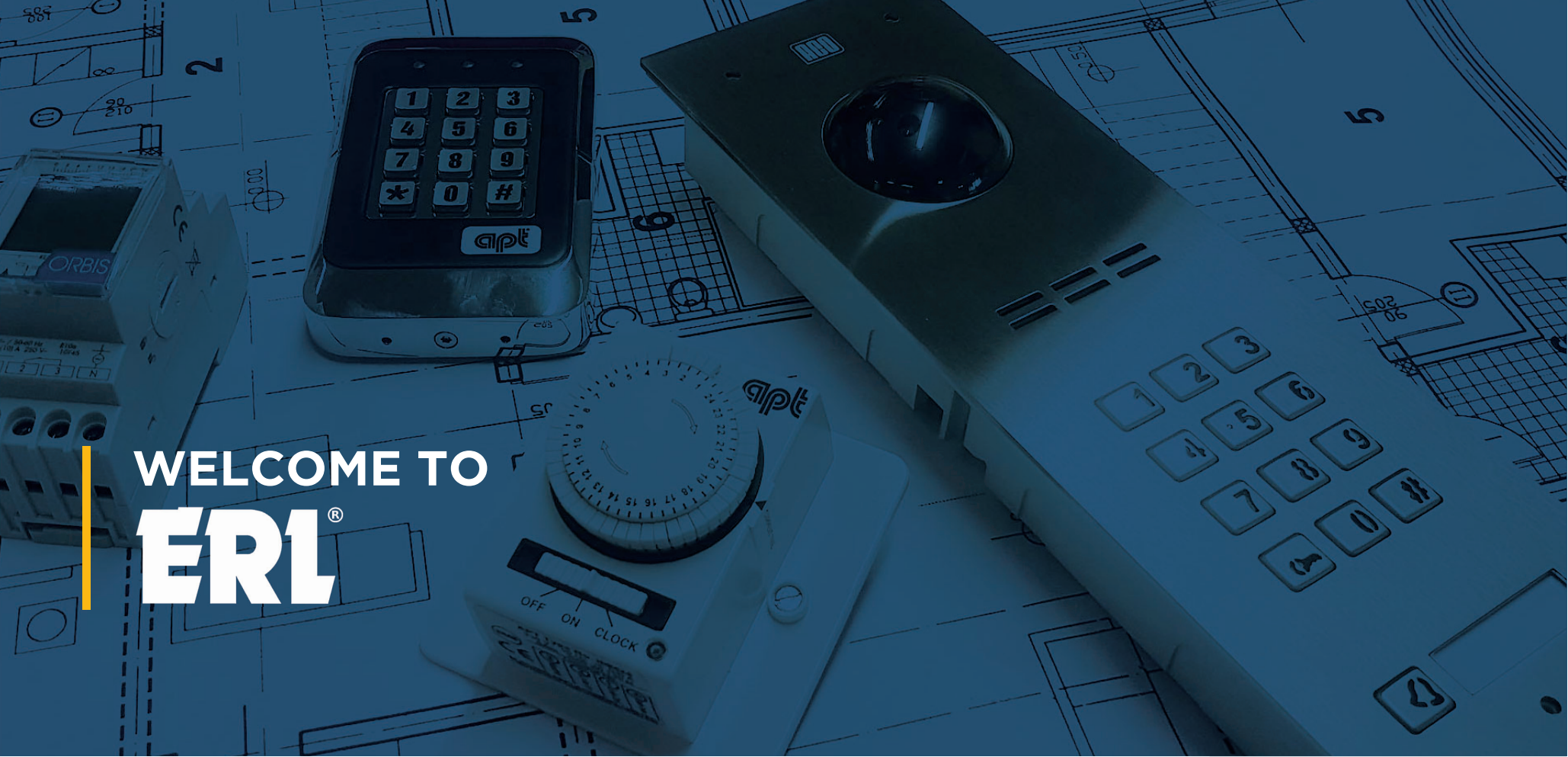
# PRODUCT CATALOGUE

Issue 56, 2021

Electro-Replacement Limited  
1 Moor Park Industrial Centre  
Tolpits Lane, Watford  
Hertfordshire  
WD18 9EU

Time Switches  
Door Entry  
Access Control  
Locks  
EV Chargers  
Thermostats & Heating  
Lighting Controls  
Energy Measurement  
Power Supplies & Fuses  
Industrial Controls  
Assistance Alert  
Clocks  
Cable Protect

[www.electroreplacement.com](http://www.electroreplacement.com)



# WELCOME TO ERL<sup>®</sup>

We are a well-established distributor which has been supplying the electrical wholesale industry for more than 50 years.

In that time we have cultivated a successful, long-standing position in the marketplace and have exclusive distribution of APT and Orbis products. This allows us to offer an extensive range of market leading products. Every product we stock undergoes a rigorous quality control assessment programme.

We take the time to do this because we believe in providing the best products at the best prices. We pride ourselves on delivering our customers a quick and efficient service and offer free comprehensive technical support to you and your customers. The following pages are an introduction of what we have to

offer. We trust you will find what you are looking for. If not, call our dedicated sales team who will be happy to assist you or visit our website for more information.

Linda Schonthal Managing Director

Listed in **LUCKINS<sup>™</sup>**

## CONTENTS

<b>TIME SWITCHES</b>  04	<b>ABOUT ORBIS</b>  46	<b>ENERGY MEASUREMENT &amp; MANAGEMENT</b>  62
<b>DOOR ENTRY</b>  12	<b>ELECTRIC VEHICLE CHARGERS</b>  48	<b>POWER SUPPLIES &amp; FUSES</b>  66
<b>ACCESS CONTROL</b>  26	<b>THERMOSTATS &amp; HEATING</b>  50	<b>ASSISTANCE ALERT</b>  74
<b>LOCKS</b>  40	<b>LIGHTING CONTROLS</b>  56	<b>AV, CLOCKS, TOOLS, CABLE PROTECT</b>  80

Check out our website to stay up to date with new products, special prices, details of our offers and promotions.

[www.electroreplacement.com](http://www.electroreplacement.com)



# TIME SWITCHES

Analogue Time Switches | Digital Time Switches | Staircase Timers | Astronomical Time Switches |



Listed in Trimble  
**LUCKINS™**

## TIME SWITCHES

### FEATURED PRODUCT

### Astronomical Time Switches

- Daily updating and easy programming
- Fixed or astronomical operations (Dawn or Dusk)
- All models bluetooth compatible with Mobile App (BT) - Built In - Non (BT) Dongle Available
- Up to 40 daily or weekly programs,
- Backlit display



ASTRO NOVA CITY

### BEST SELLER

### APT IMM24 Immersion Timer

- Developed to cope with the constantly high amperage draw found with Immersion heaters and a variety of domestic or industrial timed operations
- BEAB approved, 30 min tappets
- Three programming positions: automatic, permanent on/off



IMM24



# apt TIME SWITCHES

BEAB Approved



**IMM24**  
16.1A RESISTIVE / 4A INDUCTIVE

BEAB Approved



**IMM24EC**  
16.1A RESISTIVE / 4A INDUCTIVE



**IMM24F**  
13A RESISTIVE / 4A INDUCTIVE

## APT time switches

have been specifically developed to withstand a wide range of loads including resistive, inductive and lighting loads. i.e. timed operations of immersion heaters, motors, lighting in domestic, commercial or Industrial premises.

### Key Features

1. Compact dimensions
2. Tappet 'time' selectors allow fast, easy fingertip control
3. No loose pins
4. 24h dial offers the convenience of repeating a daily cycle
5. Selector switch can be set for continuously ON/OFF in addition to the program setting
6. 30-minute increment tappets
7. Surface mounting box containing 2x cable clamps (IMM24 & IMM24EC)
8. Indicator light (Load)
9. Terminals which can accommodate 2x 1.5mm conductors
10. Impact resistant housing (ABS)

## NEW Astronomical Bluetooth Time Switch from ORBIS

The NEW **ASTRO NOVA CITY BT** & **ASTRO UNO BT** are astronomical time switches with built in Bluetooth, coupled with an intuitive app for Android and iPhone, allowing precision control of your outdoor lighting circuit based on sunrise and sunset times.

- Can include country seasonal time changes
- Operational lags related to astronomical time
- Keyboard password protected
- 40 multi-channel daily or weekly programmes
- Program by city or co-ordinates
- 4 year memory using lithium ion battery
- Astronomical sunrise and sunset time adjustments
- Fixed astronomical time operations
- 4 annual programmes between dates

Controllable from your smartphone



### Astronomical Timers

- Automatic time switch to control lighting based on the time of day and astronomical events such as sunset and sunrise, accounting for geographic location and calendar date
- Astronomical timed switch with daily updating and simple guided programming using text menus
- Allows the programming cycles and pulses as short as 1 second
- Has a connection port for programming through the SMART BLUETOOTH KEY accessory
- Simple guided programming using text menus in different languages
- Up to 40 daily or weekly programs
- Large backlit display with contrast adjustment
- Has 4 periods between two dates with special programs, which practically makes it a yearly timer switch
- Adjustable correction of astronomical timetable of up to + 9 hours, 59 minutes
- Contact operating hours counter
- Keyboard blocking using password
- User replaceable reserve battery of up to four years
- Manual activation or deactivation, temporary or permanent
- ASTRO NOVA CITY: two switched contacts.
- Fixed or astronomical operations (dawn and dusk)
- Automatic daylight savings changes according to country
- On-screen chronogram of functioning
- REDUC function to avoid overlap between fixed and astronomical operations
- Sealable clear window to avoid unauthorised handling
- Accessories: BLUETOOTH DONGLE, 2 module surface box

Product Code	Specification	Changeover Contacts
<b>ASTRO NOVA CITY BT</b>	230 V AC 50/60Hz	2
<b>ASTRO UNO BT</b>	230 V AC 50/60Hz	1
<b>ASTRO NOVA CITY</b>	230 V AC 50/60Hz	2
<b>ASTRO UNO</b>	230 V AC 50/60Hz	1





Time Switches

Designed to monitor the operation schedule of machines and systems according to the production or service needs.

ALPHA



- DIN rail, surface or flush/panel mounting (72 x 72mm)
- Front dial is easy to program by movable tappets
- Three programming positions: automatic, permanent on/off
- Battery Back up: 100 hours
- Minimum operation time: 2 hours
- Faston Connections 6.3 x 08mm for flush/panel mounting in the electrical cabinet door
- Models with back up battery available (=> 100 h)

Product Code	Specification	Programming	Battery Backup
ALPHA/D	230 V AC 50/60Hz	Daily/15 min	No
ALPHA/QRD	230 V AC 50/60Hz	Daily/15 min	100 h
ALPHA/QRD/1	120 V AC 50/60Hz	Daily/15 min	100 h
ALPHA/QRD/12VDC	12 V DC 50/60Hz	Daily/15 min	100 h
ALPHA/QRD/24VAC	24 V AC 50/60Hz	Daily/15 min	100 h
ALPHA/QRS	230 V AC 50/60Hz	Weekly/2 h	100 h
ALPHA/QRS/1	120 V AC 50/60Hz	Weekly/2 h	100 h

UNO



- DIN rail mount, one module wide
- Three programming positions: automatic, permanent on/off
- Protective clear window helps prevent unauthorised handling
- Lateral dial with easy to program tappets

Product Code	Specification	Programming	Battery Backup
UNO/D	230 V AC 50/60Hz	Daily/15 min	No
UNO/QRD	230 V AC 50/60Hz	Daily/15 min	150 h
UNO/QRS	230 V AC 50/60Hz	Weekly/2 h	150 h

SUPRA



- DIN rail mount, 2,5 modules wide
- Front dial with easy to program tappets
- Three programming positions: automatic, permanent on/off
- Protective clear window helps prevent unauthorised handling

Product Code	Specification	Programming	Battery Backup
SUPRA/D	230 V AC 50/60Hz	Daily/15 min	No
SUPRA/QRD	230 V AC 50/60Hz	Daily/15 min	150 h
SUPRA/QRS	230 V AC 50/60Hz	Weekly/2 h	150 h

CRONO



- DIN rail, surface or flush/panel mount
- Double programming dial for two independent circuits
- Dual programming dial versions have two changeover contacts for daily-daily or daily-weekly programming
- Clear sealable window to prevent unauthorised tampering
- Faston Connections 4.8 x 04mm for flush/panel mounting

Product Code	Specification	Programming	Battery Backup
CRONO/QRDD	230 V AC 50/60H	Daily-Daily/15-30 min	100 h
CRONO/QRSD	230 V AC 50/60H	Weekly-Daily/2 h-30 min	100 h

MINI



- DIN rail, surface or flush/panel mounting
- Front dial is easy to program by movable tappets
- Three programming positions: automatic, permanent on/off
- Sealable window and terminals cover to avoid unauthorised handling

Product Code	Specification	Programming	Battery Backup
MINI/QRD	230 V AC 50/60Hz	Daily/15 min	100 h
MINI/QRS	230 V AC 50/60Hz	Daily/15 min	150 h

MINI T



- DIN rail, surface or flush/panel mount
- Compact design and installation base with precuts for power supply through cable track or tube when installed on surface
- Front dial with easy to program tappets
- Faston Connections 6.3 x 8mm for flush/panel mounting

Product Code	Specification	Programming	Battery Backup
MINI T/D	230 V AC 50/60Hz	Daily/15 min	No
MINI T/QRD	230 V AC 50/60Hz	Daily/15 min	100 h
MINI T/QRS	230 V AC 50/60Hz	Weekly/2 h	100 h

INCA DUO



- DIN rail, two modules wide
- Lateral dial with easy to program tappets
- Two programming positions: automatic and permanent on
- Protective clear window to prevent unauthorised handling

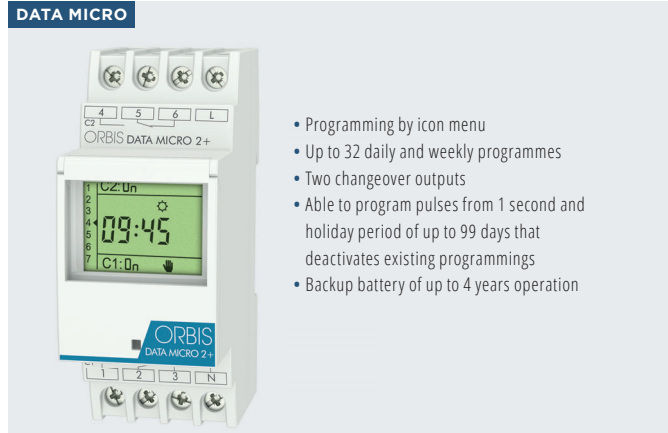
Product Code	Specification	Programming	Battery Backup
INCA/DUO/D	230 V AC 50/60Hz	Daily/15 min	No
INCA/DUO/QRD	230 V AC 50/60Hz	Daily/15 min	100 h
INCA/DUO/QRS	230 V AC 50/60Hz	Weekly/2 h	100 h



**Digital Time Switch, DIN Rail, 24 Hour/7 Day, up to 40 Programs**

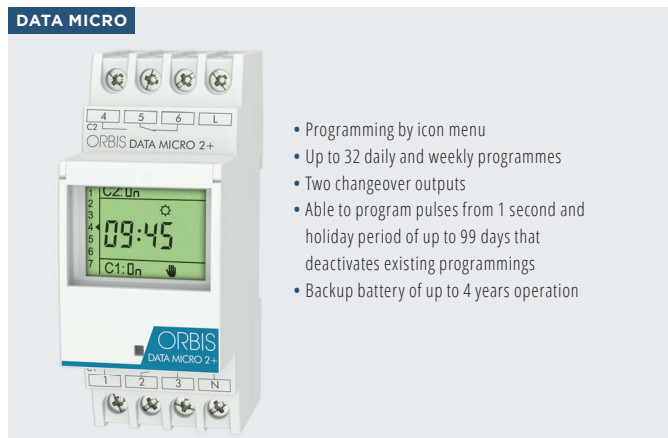
- Daily, weekly or second programmings
- Connection port for programming through BLUETOOTH DONGLE
- Free App available on Google Play and App Store
- Installation on DIN rail, two modules wide
- Easy programming guided by text menus in different languages
- Up to 40 daily or weekly programs
- Large backlit display with contrast setting and operation schedule on screen
- 4 annual periods for special programming. Able to program cycles and pulses from 1 second
- Manual activation or deactivation, temporary or permanent
- Change standard time/daylight saving automatic depending on country, deactivated or programmable
- Contacts' operation hours meter and keypad lock by password
- Available versions with one or two changeover contacts
- Interchangeable backup battery of up to 10 years operation
- Sealable clear window to avoid unauthorised handling
- Accessories: BLUETOOTH DONGLE

Product Code	Specification	Changeover Contacts
DATA LOG/1	230 V AC 50/60Hz	1
DATA LOG/2	230 V AC 50/60Hz	2
DATA LOG/1/BT	230 V AC 50/60Hz	1
DATA LOG/2/BT	230 V AC 50/60Hz	2



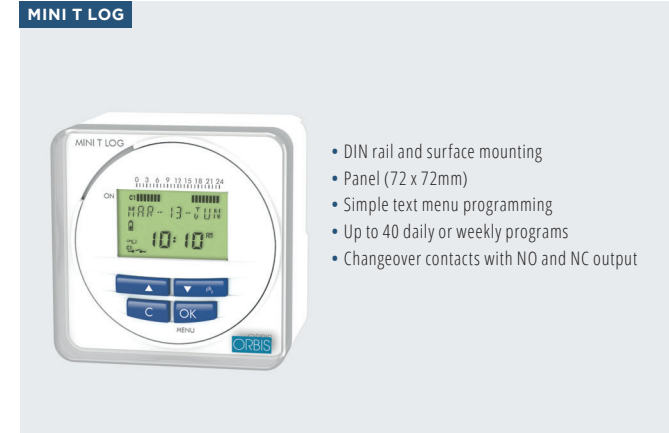
Product Code	Specification	Changeover Contacts
DATA MICRO/2	230 V AC 50/60Hz	2
DATA MICRO/PLUS	230 V AC 50/60Hz	1

- Programming by icon menu
- Up to 32 daily and weekly programmes
- Two changeover outputs
- Able to program pulses from 1 second and holiday period of up to 99 days that deactivates existing programmings
- Backup battery of up to 4 years operation



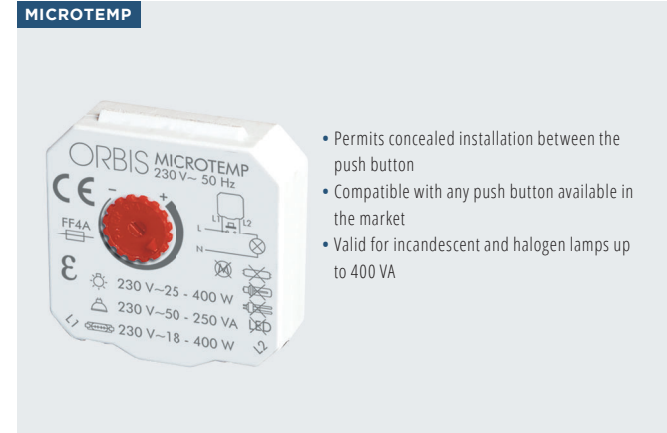
Product Code	Specification	Changeover Contacts
DATA MICRO/2	230 V AC 50/60Hz	2
DATA MICRO/PLUS	230 V AC 50/60Hz	1

- Programming by icon menu
- Up to 32 daily and weekly programmes
- Two changeover outputs
- Able to program pulses from 1 second and holiday period of up to 99 days that deactivates existing programmings
- Backup battery of up to 4 years operation



Product Code	Specification
MINI T LOG	230 V AC 50/60Hz

- DIN rail and surface mounting
- Panel (72 x 72mm)
- Simple text menu programming
- Up to 40 daily or weekly programs
- Changeover contacts with NO and NC output



Product Code	Specification	Timing
MICROTEMP	230 V AC 50 Hz	From 30 sec to 10 min

- Permits concealed installation between the push button
- Compatible with any push button available in the market
- Valid for incandescent and halogen lamps up to 400 VA



Product Code	Specification	Timing
T16/G	230 V AC 50/60Hz	From 3 min to 30 min

- An energy saving device used to turn off lighting in corridors and staircases after a pre-set delay
- DIN rail mounted single module units
- Manual control with 2 settings: Automatic operation or on which cancels the timing during repair and maintenance
- Front timing selector



Product Code	Specification	Timing
T22	230 V AC 50/60Hz	From 45 sec to 7 min

- An energy saving device used to turn off lighting in corridors and staircases after a pre-set delay
- DIN rail mounted single module units
- Manual control with 2 settings: Automatic operation or on which cancels the timing during repair and maintenance
- Front timing selector



# DOOR ENTRY

Audio Door Entry | Video Door Entry |  
Door Entry Kits | Door Entry Panels |  
Accessories | Spares |



**ORDER ONLINE**  
[www.electroreplacement.com](http://www.electroreplacement.com)



## FEATURED PRODUCT

### Video Door Entry, Single Station Kit,

- 7" colour LCD monitor, metal finish
- Suitable for indoor and outdoor use
- Wide angle camera lens, works at low light levels, LED illumination
- Volume, contrast and brightness controls on monitor
- Vandal resistant, timed volt free lock release
- Additional Monitors VID1/HF/CM



VID1/HF/CS

## BEST SELLER

### 1 Way Audio Door Entry System

- 1 station, surface or flush
- 6 core cable
- Aluminium silver finish
- External / internal use

Each kit contains: Door Entry Panel, Telephone Handset, Power Supply/Amplifier



VID1/HF/CS



The DPK range of products are extremely robust, hard wearing systems, ideally suited for applications that require a single or multi-station facility.

Systems can be ordered as a kit with surface or flush mounting panels, or as individual items for bespoke applications.

**Each Kit Contains:**

- Door Entry Panel
- Telephone Handset(s) HT3003W
- Power Supply/Amplifier
- (NH200TV) for cable runs up to 100m and for powering a 12V AC lock (EDL)

**Note:**

- If 'tradesman facility' is required, a time switch (MINI/QRD) and an additional station on is required on Door Panel.
- Maximum 3 handsets per station on (HT3003W)
- Systems can be ordered as a Kit with either surface or flush mounting panels or as individual items for bespoke applications



**KITS**

No. Of Stations	Surface	Flush	Cable Core
1	DPK1S	DPK1F	6
2	DPK2S	DPK2F	7
3	DPK3S	DPK3F	8
4	DPK4S	DPK4F	9
5	DPK5S	DPK5F	10
6	DPK6S	DPK6F	11
7	DPK7S	DPK7F	12
8	DPK8S	DPK8F	13
9	DPK9S	DPK9F	14
10	DPK10S	DPK10F	15
11	DPK11S	DPK11F	16

**PANELS ONLY**

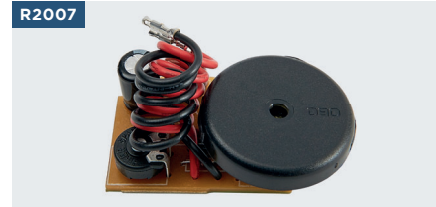
Stations	Surface	Flush	Cable Core
1	TT1S	TT1F	6
2	TT2S	TT2F	7
3	TT3S	TT3F	8
4	TT4S	TT4F	9
5	TT5S	TT5F	10
6	TT6S	TT6F	11
7	TT7S	TT7F	12
8	TT8S	TT8F	13
9	TT9S	TT9F	14
10	TT10S	TT10F	15
11	TT11S	TT11F	16





**Replacement Speakers**

- Replacement speaker for door panel
- 50mm diameter (SP50)
- 70mm diameter (SP70)



**Variable Tone Inset**

- An alternative buzzer for the HT3003W where more than 3 handsets are required per station



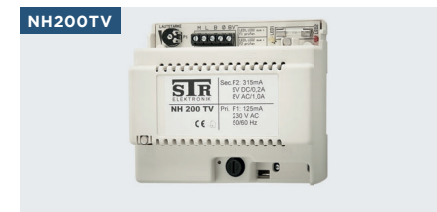
**Microphone/70mm Speaker Assembly**

- Replacement microphone/speaker assembly for door panel
- 70mm diameter speaker



**Neon Lamp for Surface TT Panel - Spare**

- Spare/replacement lamp for DPK & TT surface panel range to illuminate name plate



**Power Supply/Amplifier - up to 100m run**

- Replacement part for STR series (DPK range)
- AC/DC power supply/amplifier



**2 Door/Gate Intercommunication/Opening Module**

- For interconnecting 2 door/gate panels for communication and locking control to a handset



**Microphone TT Panel**

- Replacement microphone for a TT panel



**Handset Buzzer**

- Replacement part for HT2002/HT3003 handset



**Microphone/50mm Speaker Assembly**

- Replacement microphone/speaker assembly for door panel
- 50mm diameter speaker



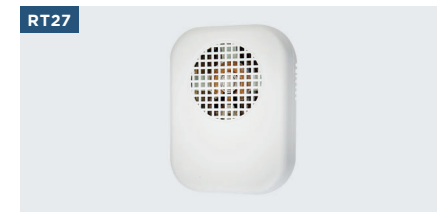
**Push Button TT Panel - Spare**

- Spare/replacement push button for DPK & TT panel range



**Neon Lamp for Flush TT Panel 3 Station + Units**

- Spare/replacement lamp for DPK & TT flush panel range to illuminate name plate



**Sounder 12V AC/DC, Surface Mounted**

- Audible sounder, good clear electronic tone
- AC/DC operation (10-18V)
- Up to 100dB
- Can be used as an extension sounder on the DPK door entry range



**Varistor Spike Suppressor**

- Spike suppression device often fitted across the coil of a lock to protect the contacts of the controlling device from contact burn
- Round Varistor element with lead
- High surge current ratings up to 8kA



**Stair Pressure Mat, 598 x 168mm**

- Pressure mat (598 x 168mm) • Ideal for stairs or shop entrance
- Use with an existing security system or use with a transformer and buzzer to create a simple security alert system
- Multiple mats can be connected together to cover a larger detection area

aco

AUDIO DOOR  
ENTRY SYSTEMS

- **Individually backlit buttons:** Made of stainless steel, easily replaceable name plates and option for Braille characters
- **Home automation system:** Control over external devices such as gates, barriers, lights and roll-ups
- **Access control:** Built-in PIN code lock and key fob reader which are integrated within the lower nameplate. *Available on COMO Range*
- **Locks & External button:** Can be connected with an external opening button and works with various types of electric strikers
- **Notification:** Additional acoustic or light notification device can be connected in the apartment
- **Works with all digital devices using the PRO, PRO-A, PV, P SYSTEMS**

DO YOU HAVE  
A BESPOKE  
REQUIREMENTS?For free advice  
Call 01923 255 344



aco

VIDEO DOOR  
ENTRY SYSTEMS

- **High-resolution colour camera:** (min. 600 lines) with a wide-angle 2.8mm lens. Adjustable camera observation direction, with infra-red LED backlight +/- 20° in every direction
- **Individually backlit buttons:** Made of stainless steel, easily replaceable name plates and option for Braille characters
- **Home automation system:** Control over external devices such as gates, barriers, lights and roll-ups
- **Access control:** Built-in PIN code lock and key fob reader which are integrated within the lower nameplate. *Available on COMO Range*
- **Locks & External button:** Can be connected with an external opening button and works with various types of electric strikers
- **Notification:** Additional acoustic or light notification device can be connected in the apartment
- **Works with all digital devices using the PRO, PRO-A, PV, P SYSTEMS**



**aco**

**AUDIO AND VIDEO  
HANDSETS & MONITORS**

ACO monitors are modern devices designed with attention to the smallest of details, the design of which corresponds to modern trends and all customer demands. The modern, scratch-resistant flat glass front and high functionality allows for versatile use of these devices in various types of investments.

INS-UP



**Handset For Audio Systems**

- Magnetic handset hang-up
- 2 buttons: opening, functional button to control home automatics
- 3 level ringing volume adjustment
- Hold feature – handset can be put on hold without hanging-up
- Home automation: control over external, devices like gates, lights or blind rollers

VDMONB7



**7" Video Door Entry Monitor - Available in Black or White**

- Audio intercom between monitors (Up to 3 monitors)
- Selectable ring tone
- Adjustable volume/colour/brightness
- Manual monitor ON function (max 30 minutes)
- Simple set up coding procedure
- Hands free speaker
- Acoustic feedback on button activations
- Glass LCD screen with touch sensitive switches
- Lock override facility
- Proximity token audible notification to monitor

VDMON4



**4" Video Door Entry Handset**

- Magnetic handset hang-up. Door bell function
- Door release without established connection
- 2 buttons: opening, functional button to control home automatics
- Adjustable ringing volume control
- Adjustment of contrast, brightness and saturation
- Full conversation privacy
- The unit is capable to receive internal calls
- Optical signalisation of calling and mute mode
- Many handsets can be connected in the same apartment
- Home automation: control over external, devices like gates, lights or blind roller

# INSPIRO +

*Do you have larger project requirements?  
Do you need more customisation?*

The **INSPIRO +** is the ideal solution for medium to large door entry projects

- Supports up to 1020 apartments/offices
- Perfect picture quality in daylight and at night.
- High-resolution colour camera
- Broad-angle, 2.8 mm lens
- Heated LCD display
- Backlit description list
- Backlit description list with call buttons
- Home automation system possibilities
- Works with electric strikers of various types
- Flat front panel made of brushed stainless steel
- Weather-resistant and vandal-proof
- Braille-adjusted keypad buttons
- Acoustic and optical panel function signalling
- **EXTENSIVE CONFIGURATION OPTIONS**

**CONTACT US FOR  
MORE INFORMATION**





**Colour Video Door Entry Kit with 4" Handset Monitor**

- Stainless steel fascia (2mm thick)
- Vandal resistant
- Surface and flush mountable (both boxes supplied)
- Metal surface housing
- Handset monitors, each with its own power supply (mount within 10m)
- 4 wire (max 70m)
- Expandable up to 4 monitors per station/2 door stations
- Volt free lock contacts (NO/NC)
- Illuminated buttons/nameplates

**Each Kit Contains:**

- Door Panel + Power Supply (14.5V)
- Monitor(s) + Power Supply (14.5V)
- Flush & Surface Mounting Boxes



No. Of Stations	Surface	No. Of Stations	Surface
1	COL/1WHS/VR	4	COL/4WHS/VR
2	COL/2WHS/VR	5	COL/5WHS/VR
3	COL/3WHS/VR	6	COL/6WHS/VR

**Colour Video Door Entry Kit with 7" Hands-free Monitor**

- Stainless steel fascia (2mm thick)
- Vandal resistant
- Surface and flush mountable (both boxes supplied)
- Metal surface housing
- Hands-free monitors, each with its own power supply (mount within 10m)
- 4 wire (max 70m)
- Expandable up to 4 monitors per station/2 door stations
- Volt free lock contacts (NO/NC)
- Illuminated buttons/nameplates

**Each Kit Contains:**

- Door Panel + Power Supply (14.5V)
- Monitor(s) + Power Supply (14.5V)
- Flush & Surface Mounting Boxes



No. Of Stations	Surface	No. Of Stations	Surface
1	COL/1WHF/VR	4	COL/4WHF/VR
2	COL/2WHF/VR	5	COL/5WHF/VR
3	COL/3WHF/VR	6	COL/6WHF/VR



**Facial Recognition, Coded Access Panel, Surface**

- Facial recognition unlocking (capacity up to 300 faces)
- Weather & dust resistant: IP55
- Pin code access unlocking, Backlit keypad,
- Operating voltage: 12V DC
- Aluminium alloy panel with blush processing



**Door Entry System, 1 Station, Silver**

- Includes panel, brushed aluminium fascia
- Flashing call indicator light on handset
- Electronic call tone, volt free door release
- Surface mounted



**1 Way Video Door Entry Panel with Keypad Access**

- Colour video, Vandal resistant,
- Key pad module 0-99 seconds
- 40 user code capacity for 30 timed and 10 toggle operations/
- Surface and flush mountable (both boxes supplied)
- Illuminated buttons/nameplate



**Video Door Entry Kit, Single Station, Surface**

- Colour video access, narrow style panels, high quality handset
- 70m distance, up to 3 handsets, up to 2 entrances
- Die-cast metal material
- Call panel: H130 x W55 x D39mm
- Monitor: H243 x W198 x D79mm



**Door Entry Kit, 1 & 2 Station**

- Aluminium silver finish front panel
- Illuminated button and name plate
- High quality audio communication
- LED downlit name plate and button
- Expandable up to 3 handsets per station (HT3003W)



**Video Door Entry/Coded Access Kit, 1 Station**

- Narrow door panel, 50 user access codes, includes monitor
- Programmable lock time (1-99 secs)
- Can control up to 2 entrances (additional door panel required)
- Illuminated press buttons on the door panel
- Rain shield



**Video Door Entry, Single Station Kit, Colour**

- 7" colour LCD monitor, metal finish. Suitable for indoor and outdoor
- Wide angle camera lens, works at low light levels, LED illumination
- Volume, contrast and brightness controls on monitor
- Vandal resistant, timed volt free lock release
- Additional Monitors VID1/HF/CM



PAGES 26-39

# ACCESS CONTROL

Coded Access Proximity Readers |  
 Kits | Smart, App Based |  
 Door Release and Exit Switches |  
 Door Retainers | Door Opener Closer |



Listed in  **LUCKINS™**

## FEATURED PRODUCT

### Combined Proximity & Keypad Access Panel

- Backlit keypad, die-cast aluminium
- Operating voltage 12V DC
- H120 x W79 x D21mm
- IP65 rated, weather resistant, vandal resistant
- Multiple LED display with audible indication
- Version available with BLUETOOTH (DG800/ BT)



DG800

## BEST SELLER

### Door Release Switch, Green Dome, Surface, 1 Gang

- Green dome button
- Brushed stainless steel fascia
- Surface or flush (surface box supplied)
- IP66 rated, vandal resistant



ESGD/S



**Proximity & Keypad Access Panel, Bluetooth**

- Bluetooth, backlit keypad, die-cast aluminium
- Operating voltage 12V DC • H120 x W79 x D21mm
- IP65 rated, weather resistant vandal resistant
- Multiple LED display with audible indication



**Combined Proximity & Keypad Access Panel**

- Backlit keypad, die-cast aluminium
- Operating voltage 12V DC • H120 x W79 x D21mm
- IP65 rated, weather resistant, vandal resistant
- Multiple LED display with audible indication



**Coded Access Panel - Surface Mounted, Aluminium**

- Vandal resistant, 20 user code model
- Internal or external use
- Illuminated keypad
- Timed exit circuit, lock override



**Coded Access Surface Mounted Panel, Metal**

- Vandal resistant, coded access panel with up to 250 user codes
- Internal or external use, IP44 rated
- Stylish chrome and black fascia
- Timed lock circuit



**Surface Mounted Slimline Panel**

- Non-volatile memory, internal/external use, IP65 rated
- Robust aluminium housing with vandal resistant screw
- Blue backlit keypad with audible response when pressed
- Allows up to 10 pins and 1000 fob/cards
- Additional fob/cards: Pack of 10 (CARD/EP)



**Proximity Reader, Standalone, Bluetooth**

- Fully programmable via master card
- ABS plastic, internal or external use
- 3 LED displays with an audible indication
- IP67 rating: stands against extremely heavy weather



**Proximity Card Kit**

- 12V DC Operating Voltage
- ABS Plastic
- Infra Red Programmer
- Allows up to 2000 Users
- IP65



**Easiprox Coder**

- Used with master card/fob for each proximity reader
- Allows full control at different locations/sites using the same coder, battery operated
- LCD display shows stored card/key fob number
- Compatible with SCAS/CP, EPX20/APT, SCAS



**Surface Mounted Slimline Kit**

- Kit Contains:**
- Keypad Panel/Proximity Reader (SCAS/P)
  - Electric Door Lock (EDL)
  - 3x Proximity Cards (FOB/EP)
  - 12V DC Power Supply (PS1A25SM12)



**Keypad, Stainless Steel**

- Resistant to bad weather conditions and vandalism, IP44 rated, 255 individual 4 digit opening codes
- 2 function modes: direct opening using keypad or with fob
- Compatible with traditional e-locks
- Available as Surface or Flush



**Coded Access Panel Kit**

- Kit Contains:**
- Coded Access Panel (CAP/ES/P)
  - Mini Maglock (MMLK)
  - 12V DC Power Supply (PS1A25SM12)



**Coded Access Panel with Electric Door Lock 12V DC**

- Kit Contains:**
- Coded Access Panel (CAP/ES/P)
  - Electric Strike Release (EDL)087
  - 12V DC Power Supply (PS1A25SM12)



**Proximity Fob Reader Kit, Surface and Flush**

- Standalone RFID reader in the unique 125kHz
- Operates 1530 cards, programmed via master card
- Compatible with traditional e-locks
- Kit contains: proximity panel, 12V DC power supply, 3 proximity fobs



**Surface Mounted Kit, Touch Sensitive**

- Kit Contains:**
- Coded access panel with integral proximity reader (EPX20)
  - 5 Proximity Cards (CARD/EP)
  - Electric door lock 12V DC (EDL)
  - 12V DC Power Supply (PS1A25SM12)



**Coded Access Surface Mounted Kit, Metal**

- Kit Contains:**
- Coded Access Panel (SCAP/K/P)
  - Electric Door Lock 12V AC (EDL)
  - Power Supply 12V DC (PS1A25SM12)





**Combined Exit Switch/Emergency Door Release**

- Single housing, surface mounted
- 80dB warning buzzer
- Green casing for easy recognition
- Clear, plastic hinged cover supplied



**Door Release Press to Exit Switch, Surface**

- High visibility green button, momentary operation
- N.O./N.C contacts
- Fits into a standard flush back box
- Internal use



**Exit Switch, Surface/flush fitting, 1 Gang**

- Stainless steel plate with stainless steel button
- Vandal resistant, high impact surface box supplied
- Wear resistant legend
- Security screws (Allen key type)
- Double pole NO/NC contacts



**Door Release Switch, Green Dome, Surface, 1 Gang**

- Green dome button
- Brushed stainless steel fascia
- Surface or flush (surface box supplied)
- IP66 rated, vandal resistant



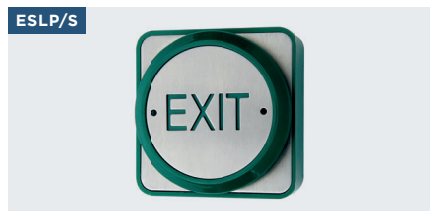
**Door Release Push Switch, 22mm, 1 Gang, Surface**

- Designed for access control systems or electric lock installations
- Green plastic surface box, stainless steel fascia
- IP66 rated, vandal resistant
- Normally open, normally closed circuits



**Door Release Switch, Surface or Flush**

- Designed for access control systems or electric lock installations
- Normally open, normally closed circuits
- Supplied with slim surface box
- 10A contact rating



**Exit Switch, Surface or flush, 1 Gang**

- Large push button with 360° activation
- Brushed stainless steel fascia
- Machine cut legend
- IP55 rated, vandal resistant



**Exit Switch, Large push (85mm) Surface or flush**

- Internal use only, stainless steel fascia
- Green surround for improved visibility
- Double pole N.O./N.C contact
- Vandal resistant retaining screws



**Exit Switch, Bluetooth, LED Surround, Green**

- Exit button & bluetooth
- ABS plastic
- LED indicator
- Operating voltage: 12V DC



**Door Release Switch, LED Indicator, Surface**

- Silver or White finish. ABS plastic surround
- Metal button, momentary
- COM/NO/NC/change-over-contacts
- Red and green LED illumination



**Disabled Persons Door Release Switch, Slimline**

- For use with access control systems
- Large brushed stainless steel front plate
- Vandal resistant, tough surface mounting box
- Internal and external use



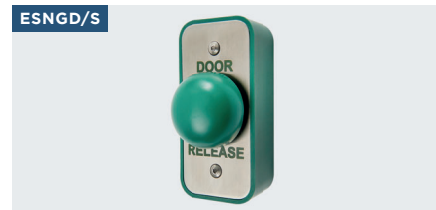
**Exit Switch, Narrow, Surface mounting**

- Narrow (85x39x28mm)
- Brushed stainless steel fascia with stainless steel button
- Wear resistant legend
- IP66 rated



**Wireless Exit Button, Narrow, Surface**

- Brushed Stainless Steel • Raised button
- Legend: Press to exit • Surface mount
- COM / NO / NC Change-over-contacts
- Wireless



**Green Dome Door Release Switch, 1 Gang, Surface**

- Narrow (85x39x28mm), wear resistant legend
- Brushed stainless steel fascia with green dome button
- IP66 rated, vandal resistant
- Contact rating 4A @ 30V AC/DC



**Disabled Persons Door Release Switch, 115mm dia**

- For use with access control systems
- Large brushed stainless steel front plate
- Vandal resistant, tough surface mounting box
- Internal and external use



**Disabled Persons Door Release Switch, 115mm dia**

- For use with access control systems
- Large brushed stainless steel front plate
- Vandal resistant, tough white surface mounting box
- Internal use complies to BS8300



**Disabled Persons Door Release Switch, 85mm dia**

- For use with access control systems
- Large brushed stainless steel front plate
- Vandal resistant, tough surface mounting box
- Internal use complies to BS8300



EDRS/2



**Emergency Door Release, Deformable Plastic**

- Deformable plastic window (no glass to break)
- Complies with risk assessment RA001, EN50133 and Industry Codes of Practice
- Supplied with two reset keys and one hex wrench
- Surface or flush mounting

ESBG/S



**Emergency Break Glass Door Release, Green**

- Surface or flush mounting
- Test facility
- Protective film for safe retention of broken glass
- 2 x normally closed/normally open circuits
- Replacement glass available: ES/RG

VRC/GS/ESBG/S



**Reset Call Point, Vandal Resistant Protective Cover**

- Protective film for safe retention of broken glass
- Test facility, 2 x normally closed/normally open circuits
- Tough clear polycarbonate call point cover
- Fits over flush (35mm) or surface (67mm)

VRC Range



**Fire Call Point Cover, Surface, Red**

- Tough clear polycarbonate call point cover
- Fits over flush (35mm) or surface (67mm)
- Call points/switch plates using surface box supplied
- Cover avoids accidental activation
- VRC/RS: Red Cover
- VRC/WS: White Cover
- VRC/GS: Green Cover

WEI/LED



**Wait & Enter, Red & Green LED Indicator**

- 12V DC operating voltage
- Red & Green LED indicator
- Adjustable programme (flashing or solid LED light)
- Surface mount or flush mount

KDRS/M/F & KDRS/F



**Key Operated Switch, Flush Mount**

- Brushed Stainless Steel
- COM/NO/NC/change-over-contacts
- KDRS/M/F: Single pole, maintained, keyed alike, key release in both positions
- KDRS/F: Single pole, momentary, keyed alike, key release in off positions

KRSD/F



**Roller Shutter Door Key Switch**

- 3 position, momentary - up/off/ down
- Key only removable in off position
- 2 independent contacts
- Vandal resistant, stainless steel plate

PFAS



**Press For Assistance Switch**

- Brushed stainless steel
- Supplied with flush box
- Vandal resistant

DR12/F



**Electromagnetic Door Retainer, Flush**

- Can be fitted to new or existing doors
- Suitable for left or right-handed doors
- Holding force: up to 32Kg (70lb)
- Adjustable arm ensures correct alignment with magnet

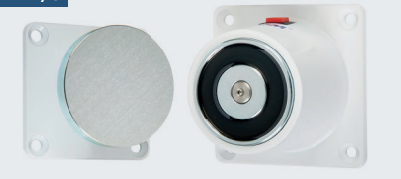
DRM24S



**Electromagnetic Door Retainer, 24V, Surface**

- Can be fitted to new or existing doors
- Suitable for left or right-handed doors
- Holding force: up to 32Kg (70lb)
- Adjustable arm ensures correct alignment with magnet

DR24/S



**Electromagnetic Door Retainer, Surface**

- Can be fitted to new or existing doors
- Suitable for left or right-handed doors
- Holding force: up to 32Kg (70lb)
- Adjustable arm ensures correct alignment with magnet

WS868



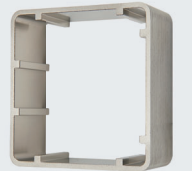
**Small 2 Channel 868MHz Receiver with Mechanical Push Pad to Wireless Converter**

**Each kit Contains:** RX Receiver & TX Fob

- RX Receiver:
- 12/24/V DC, Two 1A 30V DC normally open relay contacts
  - Momentary or bi-stable, selectable by dipswitch
  - 868MHz Radio, 200 Code memory

- TX Fob:
- Dimension - 65 x 50 x 30mm
  - Spade connections, 868MHz
  - 50 metre range, 9V battery supplied
  - Compatible with RX receiver

SMF



**Surface Mounting Metal Frame**

- Surface housing for 1 gang box
- Brushed stainless steel effect
- Metal finish
- H88 x W85 x D40mm



**Infrared Door Release Button - Available in 3 Colours, Green, Silver, Black**

- Infrared door release button - no touching required
- Brushed stainless steel plate
- Surface mount
- COM-N/O, COM-N/C
- Supplied with security screws
- Available in silver, green or black housing
- 12-24V DC operation
- Flush Option Available - DR1224/F



**No Touch Surface Infrared Door Release Button**

- Infrared Door Release Button
- Brushed Stainless Steel Plate
- Flush Mount
- COM-N/O, COM-N/C
- 12 - 24V DC Operation
- IP65



**Infrared No Touch Door Release Exit Button**

- Infrared Door Release Button
- ABS Plastic
- Legend: Door Release
- Surface Mount
- Weather Resistant: IP65
- COM-N/O, COM-N/C



**Touchless Infra-Red Exit Button**

- Infra-Red Exit Button
- Brushed Stainless Steel
- Adjustable timer
- Surface mount
- Adjustable range
- Change-over-contacts



**Wait/Enter Door Release Lock Kit - Inward Outward Opening Doors (fail Safe)**

**Each Kit Contains**

- Magnetic Lock (MMLK) and Z & L Bracket
- Boxed Power Supply, 12V DC
- Wait/Enter Indicator Panel (WEI/LED)
- Door Release Switch, Momentary (DRSP/S)



**Coded Access/Magnetic Door Release Lock**

**Each Kit Contains**

- Coded Access Panel
- Mini Maglock (MMLK)
- Z & L Bracket
- Boxed Power Supply, 12V DC



**Door Release Lock Kit with Boxed Power Supply**

**Each Kit Contains**

- Magnetic Lock (MMLK) and Z & L Brackets
- Boxed Power Supply, 12V DC
- Key Switch (maintained)
- Surface Mounting Box (SMF)



**Door Release Lock Kit with Boxed Power Supply**

**Each Kit Contains**

- Magnetic Lock (MMLK) and Z & L Bracket
- Boxed Power Supply, 12V DC
- Lock Release Switch
- Control Relay/Base





**ONEK1**  
Single Door Access Control Kit, Digital Keypad, Electric Door Lock

**Each Kit Contains**

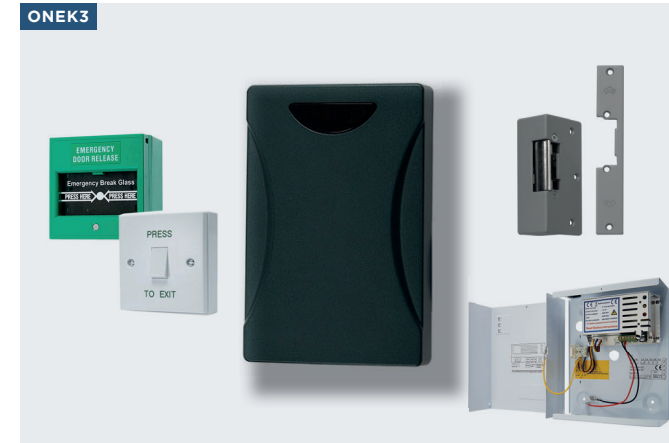
- Digital Keypad, up to 21 users, weather and vandal resistant
- Press to Exit Button
- Single Pole Break-Glass Unit
- Fail Secure Electric Door Lock
- 12V DC, 1A Boxed Power Supply



**ONEK2**  
Single Door Access Control Kit, Digital Keypad, Mini Maglock

**Each Kit Contains**

- Digital Keypad, up to 21 users, weather and vandal resistant
- Press to Exit Button
- Single Pole Break-Glass Unit
- Mini Magnet (includes Z & L bracket)
- 12V DC, 1A Boxed Power Supply



**ONEK3**  
Single Door Access Control Kit, Proximity Reader (10 FOBs), Electric Door Lock

**Each Kit Contains**

- Proximity Reader, Programmer
- Press to Exit Button
- 10 key fobs
- Single Pole Break-Glass Unit
- Fail Secure Electric Door Lock
- 12V DC, 1A Boxed Power Supply



**ONEK4**  
Single Door Access Control Kit, Proximity Reader (10 FOBs), Mini Magnet

**Each Kit Contains**

- Proximity Reader, Programmer
- Press to Exit Button
- 10 key fobs
- Single Pole Break-Glass Unit
- Mini Magnet (includes Z & L bracket)
- 12V DC, 1A Boxed Power Supply



**ONEK5**  
Single Door Access Control Kit, Slimline Digital Keypad, Electric Door Lock

**Each Kit Contains**

- Digital Keypad, up to 1000 user code capacity, weather and vandal resistant
- Press to Exit Button
- Single Pole Break-Glass Unit
- Fail Secure Electric Door Lock
- 12V DC, 1A Boxed Power Supply



**ONEK6**  
Single Door Access Control Kit, Slimline Digital Keypad, Mini Maglock

**Each Kit Contains**

- Digital Keypad, up to 1000 user code capacity, weather and vandal resistant
- Press to Exit Button
- Single Pole Break-Glass Unit
- Mini Magnet (includes Z & L bracket)
- 12V DC, 1A Boxed Power Supply



**ONEK7**  
Single Door Access Control Kit, Proximity Keypad (10 FOBs), Electric Door Lock

**Each Kit Contains**

- Keypad/Proximity Reader, Up to 2000 user codes, weather and vandal resistant, 10 x Key Fobs
- Press to Exit Button
- Single Pole Break-Glass Unit
- Fail Secure Electric Door Lock
- 12V DC, 1A Boxed Power Supply



**ONEK8**  
Single Door Access Control Kit, Proximity Keypad (10 FOBs), Mini Maglock

**Each Kit Contains**

- Keypad/Proximity Reader, Up to 2000 user codes, weather and vandal resistant, 10 x Key Fobs
- Press to Exit Button
- Single Pole Break-Glass Unit
- Mini Magnet (includes Z & L bracket)
- 12V DC, 1A Boxed Power Supply

WDB101/B



**Wireless Wi-Fi Doorbell (Available in Black or White Finish)**

Easy to install wireless Wi-Fi video doorbell. Can fit well on commercial or residential entrances. Whenever a motion is detected, the camera streams an image to your mobile device to alert you of any activity of anyone approaching your door allowing you to take action.

*Never miss a parcel delivery with the built-in 2 way audio to talk to the driver as they ring the doorbell.*

**Video Doorbell Features**

- Battery powered (rechargeable) or optional AC transformer
- 1080P HD video and live streaming
- 166 degree wide angle lens
- 16G SD card supplied (max 32G)
- 2 way audio intercom
- Motion alert to your mobile device
- IR night vision - 5m range
- Up to 5 users per device
- Unlimited doorbells per device
- IOS and Android phones are supported
- FREE APP. NO MONTHLY SUBSCRIPTION REQUIRED

**Chime Features**

- Plugs into UK socket
- 55 ring tones + LED indicator
- Adjustable volume (5 levels) max 110dB
- 200m max range (in open area)
- 433MHz
- Internal use only

**Each Kit Contains**

- Video Doorbell
- Batteries (rechargeable)
- Wall Mounting Plate
- Charging Lead
- Door Chime

WCAM200A/W



**Wi-Fi Video Security Camera, Motion Detection**

Easy to install wireless Wi-Fi video camera to protect your property and vehicles whether its commercial or residential.

- Whenever a motion is detected, the camera streams an image to your mobile device to alert you of any activity. Dial-in at any time to keep an eye on your property 24/7.
- IP65 Internal/External use
- Battery powered (rechargeable)
- Battery life 2-3 months with 20 activations per day
- 1080P HD video and live streaming
- 110 degree wide angle lens
- 16G SD card supplied (max 64G)
- 2 way audio intercom
- 6m detection range
- Motion alert to your mobile device
- IR night vision (5m range)
- Up to 5 users per camera
- Unlimited cameras per device
- IOS and Android phones are supported
- Supplied with external/internal (magnetic wall brackets or can be placed on a shelf)
- FREE APP

ADO/KOI



**Automatic Electric Door Opening/Closing Kit**

- Ideal for use by disabled persons/elderly
- Activate by means of push button, keypads etc
- Gives powered opening & closing of a door, including sites with heavy duty cycles
- For inward or outward opening doors
- Other versions available including the SR model for able-bodied/disabled access
- The Encoder knows the exact position of the door at all times, eliminating the need for a door stop
- Easy to install and program with user-friendly electronics.
- Non-volatile memory
- Battery back-up included
- Numerous features allowing flexibility of operation to suit many requirements.
- Double doors can be simply managed as master/slave configuration
- BS EN16005 compliant versions are also available

ADO/S/N



**Additional Remote Control for ADO/KOI**

- This 2 button hand-held transmitter has rolling code technology - rolling code increases the security of the transmitted signal by changing constantly.
- 2 button remote control of high quality and high performance to provide wire-free control of the ADO/KOI Door Opener and Closer
- Battery powered, with the ability for the user to change the battery when necessary.
- Wire-free applications
- Up to 200 metres range
- Cost-effective switching
- Internal and external use



# LOCKS

Maglocks | Fail Open/Secure |  
Body & Plates |



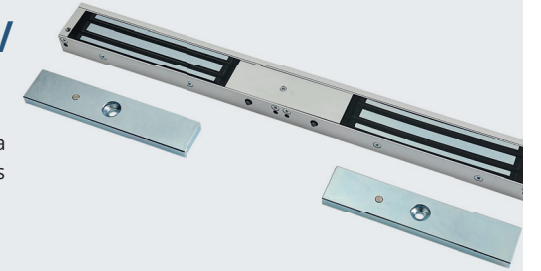
**ORDER ONLINE**  
[www.electroreplacement.com](http://www.electroreplacement.com)



**FEATURED PRODUCT**

## Double Mini Maglock, 12V/24V DC, Internal

- This type of internal lock is used in a variety of applications, e.g. on doors which are part of a fire exit route
- Supplied with mounting bracket
- Internal use only



DMLK

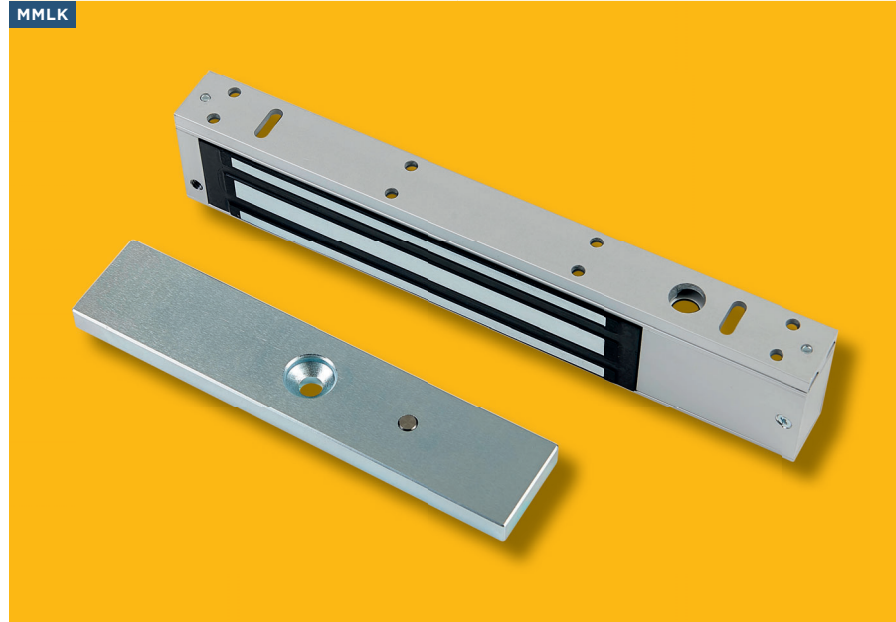
**BEST SELLER**

## Mini Maglock, Internal, 12V/24V DC with Z & L brackets

- Fail safe - often used for fire exit route doors. Internal use only
- Suitable for inward/outward opening doors. Z and L brackets supplied
- Holding force 300Kg (600lb), 12/24V DC
- Satin anodised aluminium finish



MMLK



**Mini Maglock, Internal, 12V/24V DC with brackets**

- Operating voltage 12/24V DC (selectable)
- Holding force 272Kg (600lb)
- Aluminium housing
- Fail safe - often used for fire exit route doors. Internal use only
- Suitable for inward/outward opening doors.
- Z and L brackets supplied
- 12/24V DC
- Satin anodised aluminium finish



**Double Mini Maglock, 12V/24V DC, Internal**

- This type of internal lock is used in a variety of applications, e.g. on doors which are part of a fire exit route
- Internal use only



**Midi Maglock, Internal/External 12V/24V DC**

- This fail safe, stainless steel, magnetic lock is suitable for both external/internal use for gates and doors
- Holding force 545kg (1200lb)
- IP67 rated
- Weight 5Kg



**Mini Maglock, External with Z bracket**

- This fail safe, stainless steel magnetic lock is suitable for both external/internal use for gates and doors
- Holding force 400Kg (800lb)
- IP67 • 12/24V DC
- Z mounting bracket



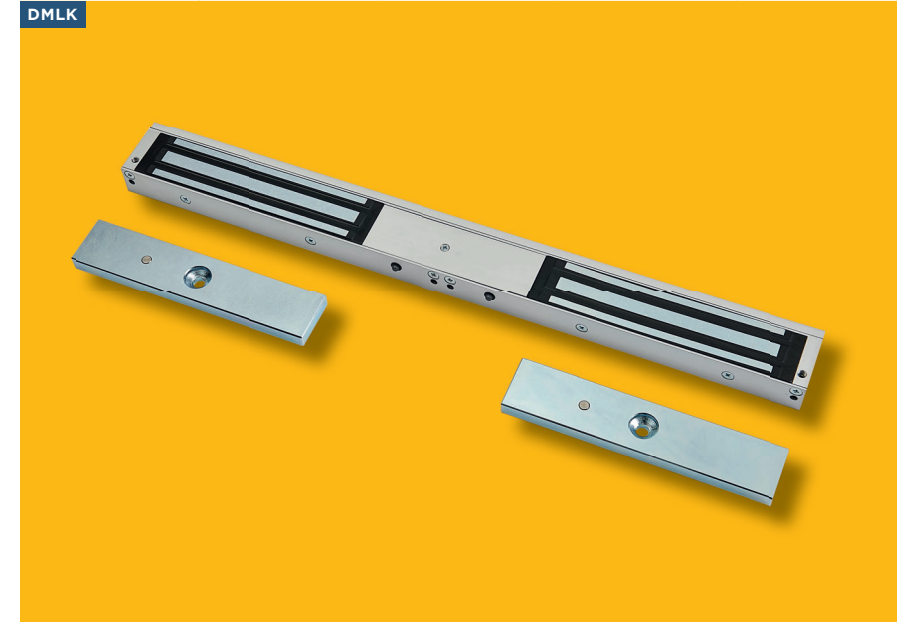
**Mini Maglock/Handle, Internal, 12/24V DC**

- Fail safe magnetic lock incorporating a door grip
- Internal. Inward/outward opening doors
- Holding force 272Kg (600lb)
- Satin anodised aluminium finish
- Door grip hides magnetic lock on closure



**Z Bracket for MM1200**

- Aluminium Z and L brackets for MM1200 Midi Maglock



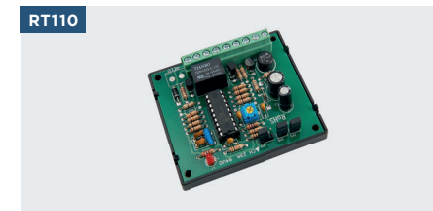
**Double Mini Maglock, 12V/24V DC, Internal**

- This type of internal lock is used in a variety of applications, e.g. on doors which are part of a fire exit route
- Internal use only



**Fire Alarm Relay**

- Fire alarm release for locks or similar devices
- Normally Open or Normally Closed contacts
- 12-24V DC voltage. Operates on power being supplied or removed for greater flexibility, i.e. when sounders' circuitry operates on N.O alarm circuit
- Compact circuit board 59 x 47 x 20mm



**Timer Board for DC Lock, 1 sec to 10 min**

- Adjustable timer 1 sec to 10 mins
- + or - trigger
- Power input: 12-24V DC
- Dimensions: H63 x W73 x D20mm



**LARGE RANGE OF  
MAGLOCKS AVAILABLE**

**Call our Sales Team for  
more information  
01923 255 344**



**Timer Board For DC Lock, 1-15 seconds**

- Timer board for locks and other general purpose devices
- Volt free changeover contacts
- Supply voltage 12/24V DC





**EB300**  
Shoot Bolt, Surface mounted

- Operates by means of a solenoid
- Suitable for inward/outward opening doors
- Auto door relock - door locking can be delayed by up to 9 secs
- Power consumption of only 0.3A when locked @ 12V DC
- Door lock status feature



**EDL**  
Electric Door Lock 8-12V AC/DC, Fail Secure

- Internal use, suitable for surface/recessed mounted locks
- Euro style, fail secure, mortice or surface
- 12V AC/DC, includes suppression



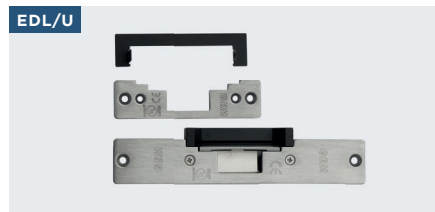
**EDL/F**  
Electric Door Lock, 12V DC, Fail Open

- Electric release
- Operating voltage: 12V DC
- Mortice and rim plates
- Adjustable jaw available



**EDL/ANS**  
Electric Door Lock 12V DC

- Fail open lock for both internal/external outward opening doors (mortice type)
- This type of lock releases the door catch when the power is removed from the lock. It is suitable for both hollow aluminium/metal frames (brackets supplied) and wooden jambs



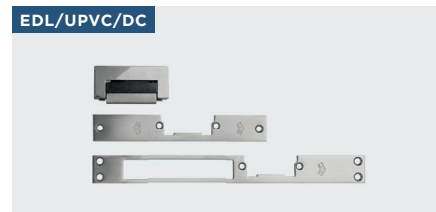
**EDL/U**  
Electric Door Lock, Open/Secure

- An extremely versatile lock release with integral fail open and fail secure functions
- 12 or 24V DC operation
- Suitable for installation on wooden frame doors, opening inwards



**EDL/UPVC**  
Electric Door Lock For UPVC Doors, 12VAC

- Lock for UPVC doors opening inwards
- Two stainless steel flush face plates
- 12V AC operation
- Adjustable lock face plate
- Face plates supplied. Suitable for use with/without deadlock



**EDL/UPVC/DC**  
Electric Door Lock For UPVC Doors, 12VDC

- Lock for UPVC doors opening inwards
- Two stainless steel flush face plates
- 12V DC operation
- Adjustable lock face plate
- Face plates supplied. Suitable for use with/without deadlock



**ERB/12VAC/FS**  
Electric Release Body Only, Fail Secure

- Suits UPVC frames
- **12V AC, 1.08 amps, 8,000 ohms**
- Tolerance: 43
- Symmetrical, adjustable jaw



**ERB/12VDC/FS**  
Electric Release Body Only, Fail Secure

- Suits UPVC frames
- 12V DC. Amps: 0.72, 15,000 ohms
- Tolerance: 11-3
- Symmetrical, adjustable jaw



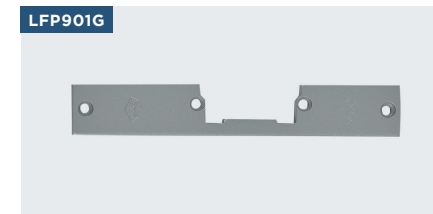
**ERB/12VDC/FO**  
Electric Release Body Only, Fail Open

- Suits UPVC frames
- 12V DC, 0.29 amps, 40,000 ohms
- Tolerance: 11-13
- Symmetrical, adjustable jaw



**LFP909G**  
Standard Release Plate Only Grey

- Standard release plate only
- Grey steel
- 130 x 22 x 43mm



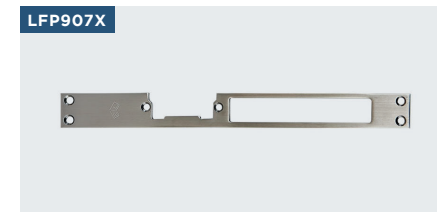
**LFP901G**  
Small Release Plate Only, Grey

- Small release plate only
- Grey steel
- 159 x 25 x 64.5mm



**LFP901X**  
Small Release Plate Only, Stainless Steel

- Small release plate only
- Stainless steel
- 159 x 25 x 64.5mm



**LFP907X**  
Sash Plate Only, Stainless Steel

- Sash plate only
- Stainless steel



**LFP925G**  
Surface Housing, Grey

- Surface housing
- Grey steel



**LFP909X**  
Standard Release Plate Only, Stainless Steel

- Standard release plate only
- Stainless steel
- 130 x 22 x 43mm



# ABOUT ORBIS

At ERL we are extremely proud to be in partnership with Orbis and are the sole distributor of Orbis products in the UK and Ireland.

Orbis is an International Brand with sixty-plus years in the Industry. They have manufactured more than 25 million products, supplying to over sixty countries worldwide. With production centres in four European countries and offices in Germany, Italy and Spain, Orbis has a truly global reach and reputation. Their products are manufactured with an overarching view towards quality and robust design.



*By choosing from the Orbis range, you can be sure you are getting the highest quality products.*



TIME SWITCHES



OUTDOOR LIGHTING MANAGEMENT



ELECTRIC VEHICLE CHARGERS



MOTION PRESENCE DETECTORS



ENERGY MEASUREMENT & MANAGEMENT



CLIMATE CONTROL & HOME AUTOMATION



# EV CHARGERS

## Introducing the VIARIS

The SMART EV charging solution for electric vehicles

- Wall mounted charging station for residential and commercial installations suitable for any type of electric vehicle
- Quick and easy to install
- Use your mobile to monitor charging or set up scheduled charge times

All ORBIS Chargers include a series charge modulator that constantly increases or decreases the consumption of the electric vehicle depending on the rest of the consumption of the home. This achieves the highest recharge in the shortest possible time without exceeding the contracted power.

### KEY BENEFITS

1. Charging mode 3, Single Phase & Three Phase
2. Tethered lead or socket outlet models are available
3. One or Two outputs
4. Intelligent VIARIS charge modulator as standard
5. Energy meter with MID certification



For further information call our specialised sales team

**01923 255344**

### UNI Range



#### Electric Vehicle Charger

- Single phase smart charger suitable for cars, motorcycles and electrical bicycles or plug-in hybrid vehicles.
- Attractive design, easy operation and trouble free installation both in residential garages and in the tertiary sector.
- A charge modulator monitors the home's energy consumption and adjusts power demand to optimise the highest charge within the shortest possible period without exceeding the supply capacity.
- Maximum current limitation available via a selector switch.
- Models with 5 meters tethered lead (connecting cord). Charge Mode 3 (high communication level) with Type 2 connector according to EN 62196.
- Residual direct current detector to protect people.
- Wi-Fi communications.
- We can view the status, download charging station and home consumption history logs and act on the charging station conveniently via APP VIARIS with a smartphone.
- Remote firmware updates. Mobile phone notifications.
- Standard MQTT network protocol.
- LED lamps provide VIARIS UNI state and vehicle charge progress indication. Tactile sensor or RFID
- PC enclosure with IK10 high strength and high heat distortion temperature. IP54 degree of protection.

Product Code	Charge Rate	Type	Connection	Phase
OB94U220HA1	7.4kW	Type 2	Tethered	Single Phase
OB94U220HA1	22kW	Type 2	Tethered	Three Phase

### COMBI Range



#### Electric Vehicle Charger

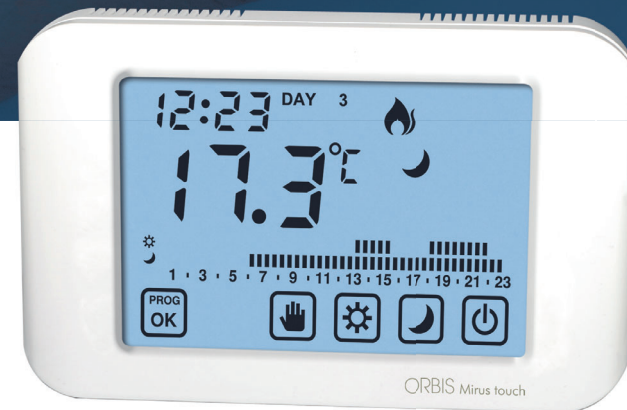
- Single-phase home charging station suitable for cars, motorcycles, electrical bicycles or plug-in hybrid vehicles.
- Easy installation, trouble free operation and attractive design for home applications.
- Maximum current limitation available via a selector switch.
- The VIARIS COMBI series allows charging electrical vehicles in home, community or office garages.
- Tethered lead or socket outlet models are available. Charge Mode 3 (high communication level).
- Connecting cord available (5 m) with Type 2 connector according to EN 62196.
- Tactile sensor for charge activation/deactivation. Wi-Fi communications.
- Power output control, energy consumption monitoring and charging time scheduling functions—to benefit from time-of-day electricity tariffs—conveniently available via APP VIARIS COMBI with a smartphone.
- A charge modulator monitors the energy consumption and adjusts power demand to optimise the highest charge within the shortest possible period without exceeding the supply capacity. On the two-outlet VIARIS COMBI versions, the charge modulator distributes the available power between both outlets.
- LED lamps provide VIARIS COMBI state and vehicle charge progress indication.
- PC enclosure with IK08 impact resistant, with IP54 protection index and high heat distortion temperature.
- These charging stations use the standard MQTT communication protocol with cloud storage, enabling remote control and display of the charging system and facilitating, in turn, integration into other management platforms.

Product Code	Charge Rate	Type	Connection	Phase
OB94DM7432CT2	7.4kW	Type 2	Tethered	Single Phase
OB94DM7432BT2	7.4kW	Type 2	Socket	Single Phase

PAGES 50-55

# THERMOSTATS & HEATING

Analogue Thermostats |  
 Digital Thermostats | Froststat |  
 Pipe Thermostats | Trace Heating |



**ORDER ONLINE**  
[www.electroreplacement.com](http://www.electroreplacement.com)



**FEATURED PRODUCT**

## ORBIS Touchscreen Thermostat

- Touchscreen, large backlit display for easy reading
- Easy and intuitive programming
- Large backlit display for easy reading
- Input for night temperature reduction
- Has 3 temperature settings plus anti-icing to avoid frozen pipes



THALOS

**BEST SELLER**

## APT Precision Room Thermostat, 16A

- Small, precision ambient thermostat with a compact design
- Allows blocking of temperature
- 3 wire compact thermostat
- High amperage contacts
- Suitable for heating or cooling



RT16/3



THALOS



**Touchscreen Thermostat**

- Touchscreen, large backlit display for easy reading
- Easy and intuitive programming
- Large backlit display for easy reading
- Input for night temperature reduction
- Has 3 temperature settings plus anti-icing to avoid frozen pipes

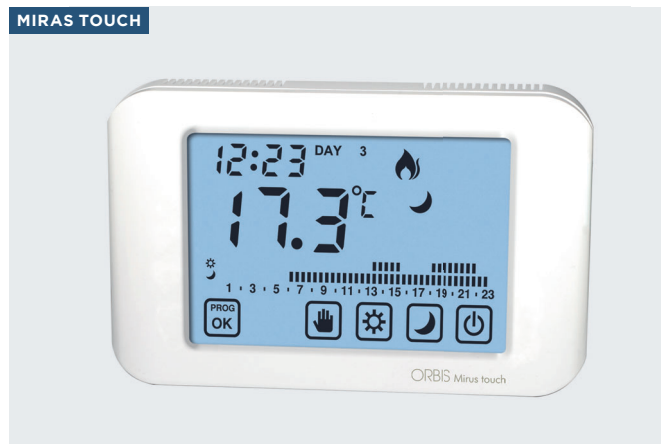
VELUS TOUCH



**Touchscreen Thermostat**

- Touchscreen, Large backlit display for easy reading
- Adjustable temperature values for Summer/Winter modes
- Each mode includes three temperature configurations (Comfort, Economy or Anti-freeze)
- Manual regulation operation or standby

MIRAS TOUCH



**Touchscreen Chronothermostats**

- Touchscreen, 7 easy to configure programs
- Easy and intuitive programming with copy/paste function
- Large backlit display for easy reading
- Three adjustable temperature levels, manual mode and temporary manual

RT16/2



**Room Thermostat, 16A**

- Small, precision ambient thermostat with a compact design
- No power supply needed, allows blocking of temperature to avoid changes
- 2 wire compact thermostat.
- High amperage contacts
- Suitable for heating or cooling

DRT1



**Digital Room Thermostat, 5A**

- Easy to use digital thermostat (24hr)
- Accurate temperature control (0.5°C)
- Function displays symbols to indicate on/off status
- Fits directly onto 1 gang flush box (35mm)
- Heating or cooling operation.
- 2 core cable. 5A contact rating
- Battery operated (2x AAA not supplied)

DRT2



**Digital Room Thermostat, Programmable, 24/7**

- 4 in-built programmes per time group, e.g. Weekdays-Saturday or Sunday
- Battery operated. Flush or surface mounted
- Accurate temperature control (0.5°C)
- Function displays symbols to indicate on/off e.g. Weekdays-Saturday or Sunday
- Temporary or permanent override
- 12/24hr clock display time adjustable in 15 minute segments

DRT1RC



**Digital Room Thermostat, Wire-Free, 5A**

- 24hr, 7 day programmable with 4 in-built programmes per time group, e.g. (weekdays-Saturday or Sunday)
- Battery operated sensor
- Flush or surface mounted
- Pre wired, mains operated receiver (surface mounted)
- Accurate temperature control (0.5°C)

DRT2RC



**Digital Room Thermostat, Wire-Free, 5A**

- 24hr, 7 day programmable with 4 in-built programmes per time group, e.g. (weekdays-Saturday or Sunday)
- Battery operated sensor
- Flush or surface mounted
- Pre wired, mains operated receiver (surface mounted)
- Accurate temperature control (0.5°C)



**Room Thermostat, 16A**

- Small, precision ambient thermostat with a compact design
- Allows blocking of temperature
- 3 wire compact thermostat
- High amperage contacts
- Suitable for heating or cooling



**Room Thermostat with Neon Indicator Light**

- 3 wire thermostat with an accelerator, fast response operation
- Room temperature control of heating, cooling or fan devices
- Power supply: 230V AC
- Temperature range: 10°C to 30°C
- Current rating – heating: 16A (4)
- Cable requirements: 3 core



**10A Froststat**

- Control of low temperature switching in internal applications
- Accelerator fitted for fast response
- 10A contact rating
- Minus 5 to 15°C temperature range
- Suitable for garages and internal applications
- 3 wire thermostat with high amperage contacts
- Can also be used for ventilation control



**16A Cylinder/Pipe Thermostat**

- 16A rating, temperature range 10-90°C
- Supplied with coiled fixing cable to ensure good contact
- 2 wire compact design
- High amperage volt free contacts
- Allows setting of temperature required, e.g. ideal for protecting pipes from frost damage



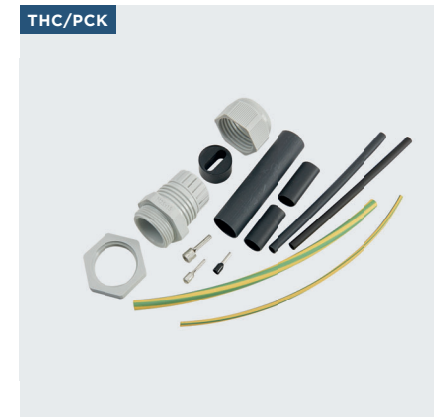
**Digital Central Heating Programmer, 1 Channel**

- Digital central heating programmer with built-in thermostat (5-30°C)
- Programmable for 5 + 2 day, 7 day or 24hr
- Up to 30 days battery back-up
- Can be used for many applications including Combi/Condensing boilers



**Digital Central Heating/Hot Water Programmer**

- Temperature control for both heating/cooling
- 12/24hr clock format, day-light saving
- LED on/off status indicator, program memory backup 30 day
- Blue backlight. 3 on/off program periods per day
- 3 day - programming modes available - 24hr, 5/2d or 7d



**Termination Kit for Self-Regulating Trace Heating**

- 6x heat shrink sleeves
- 2x wire pins (ferrules)
- Pin-type cable socket
- M25 cable gland
- Connection insulator



**Self-Regulating Trace Heating Cable Kit**

- The ideal solution for low power frost protection or temperature maintenance on metallic and non-metallic types
- Moisture proof and UV resistant
- Will not overheat or burn out even when overlapped
- Includes THC/PCK
- Available in 2m and 5m kits



**Self-Regulating Trace Heating Cable Kit, 20m Drum**

- The ideal solution for low power frost protection or temperature maintenance on metallic and non-metallic types
- Moisture proof and UV resistant
- Will not overheat or burn out even when overlapped
- Includes THC/PCK



PAGES 56-61

# LIGHTING CONTROLS

Solar Sensor | Motion Presence Detectors |  
Photo Electric Controls | Switches |



Listed in  **LUCKINS™**

## FEATURED PRODUCT

### PIR Motion Detector

- Built-in sun-roof installation using a 65mm drill
- Discreet design and basic functionality to most installations
- Suitable for all types of lamps



DICROMAT

## BEST SELLER

### Electronic PEC Adjustable Lux

- Single contact from 5 to 300 Lux
- Higher degree IP54 protection which allows it to work in extreme conditions
- Activation delay to avoid unwanted switch-on or switch-off due to vehicle headlights, clouds or other factors
- LED operation light. 230V AC. 50Hz



VEGA



Lighting Control

CIRCUMAT +



Ceiling Multi-Sensor, Surface

The CIRCUMAT ceiling multi sensor has been designed to be small and discrete.

- Surface mount on the ceiling (120mm diameter x 25mm height)
- Status LED detects movement or changes in lighting conditions outside of the selected level
- 7m diameter detection range (360°)
- Zero-crossing relay for a better switching of LED-type loads, fluorescent or low energy lighting
- Adjustable parameters detection area, timing and light sensitivity
- Power supply 230VAC, 50-60Hz
- Plug-in base

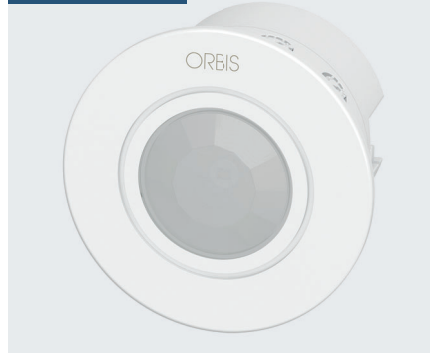
ISIMAT +



PIR Motion Sensor. Angle: 200° with 180° horizontal Rotation

- Wall installation smooth. IP55
- Angle: 200° with 180° horizontal rotation
- Timing, light sensitivity adjustable
- Surface-wall installation motion detector
- IP55 protection from dust ingress and water jets in accordance with EN 60529
- Adjustable parameters: timing and light sensitivity
- Detection field limiter included, which allows detection cancellation in specific points within the detection area
- Detector head rotation to direct towards detection area

DICROMAT RANGE



PIR Motion Detector

- Built-in sunroof installation using a 65mm drill
- Discreet design and basic functionality to most installations
- Adjustable parameters: timing, and light sensitivity
- Detection field limiter included, which allows detection cancellation in specific points within the detection area.
- Simple to install using a 65mm drill. Installation is built-in to the ceiling
- Suitable for all types of lamps

DICROMAT + CR



Programmable Motion Detector

- Same technical features as the DICROMAT + with the ability to be programmed by remote control MANDO CR
- Facilitates the setting of parameters without having to climb a ladder. Ideal for installations with several detectors such as hotels, offices, buildings, etc

MANDO CR



Remote Control for CR range of Switches

- Remote control for parameter adjustment in CR compatible models
- It streamlines and simplifies both installation and maintenance without the need of a ladder, tools and without having to remove the detector for its regulator
- With one single CR control you can control all installation detectors
- Adjustable parameters: 1 and 2 output timing, light sensitivity and detection area

ECOMAT



Ultrasonic Detector

- High frequency detection (5.8GHz), high performance detects even slight movements
- Can pass through non-metallic surfaces and can be installed hidden over plaster or false ceiling
- Inner and outer corner installation accessory

VEGA



Electronic PEC Adjustable Lux

- Single contact from 5 to 300 Lux or switch-off due to vehicle headlights, clouds or other factors
- Higher degree IP54 protection which allows it to work in extreme conditions
- Activation delay to avoid unwanted switch-on
- LED operation light, 230V AC, 50Hz





**Keycard Switch, 16A, Polished Chrome Finish**

- High current rating (16A). Neon locator
- Unique key card size avoids the use of standard plastic cards (1 included)
- Surface or flush mountable (1 gang size)
- Additional key cards available (KCS/SK)



**Keycard Switch, 16A, White**

- Suitable for: (a) door entry (when wired to an appropriate door lock) or (b) control of lighting, air conditioning etc
- IP65 rated card reader, neon locator
- 2 separate memories allowing up to 20 cards to be registered (10+10)
- No computer required to program cards



**Keycard Switch, 16A, Polished Brass**

- High current rating (16A). Neon locator
- Unique key card size avoids the use of standard plastic cards (1 included)
- Surface or flush mountable (1 gang size)
- Additional key cards available (KCS/SK)



**Key Card Entry/Energy Control Kit, 1 Switch**

- Suitable for: (a) door entry (when wired to an appropriate door lock) or (b) switching of lighting, air conditioning etc
- IP65 rated card reader • Neon locator
- 2 separate memories allowing up to 20 cards to be registered (10+10)
- No computer required to program cards



**Key Card Entry/Energy Control Kit, 2 Switch**

- Suitable for: (a) door entry (when wired to an appropriate door lock) or (b) control of lighting, air conditioning etc
- IP65 rated card reader • Neon locator
- 2 separate memories allowing up to 20 cards to be registered (10+10)
- No computer required to program cards



**Key Card - Pack of 10**

- Pack of 10 cards, credit card size
- For use with KCE1 & KCE2
- Individually coded cards
- Slotted for use with lanyard



**Slide Dimmer Mains 1500W, Brushed Aluminium**

- Smooth, calibrated slide operation
- Compatible LED, low energy, halogen, low voltage and neon lighting
- Power handling capacity 1500W (surface mounting), 1200W (flush mounting)
- Panel mounted fuse and LED indicator



**Solar Sensor Light 1000/150/50 Lumens**

- Adjustable lumens 50, 100, 1000. 5m movement sensor/ 120°
- IP65, optimised for UK weather, 7 nights lighting time
- 3 operation modes. 9 hrs charge time



**Two Part Photocell 70 Lux Switching Level**

- 2 part photocell designed for street and amenity lighting applications.
- Works with inductive and resistive loads
- Integral 'Press to Test' switch ideal where regular testing is required
- Low power consumption
- Compact remote detector
- Replacement head available (P42D)



**Electronic PEC Kit**

- Photo-electric cells are designed to automatically switch lights on at dusk and off at dawn
- Pre-calibrated to switch at 70 Lux ensures it operates during night hours & dull weather conditions
- PEC units incorporate a delay factor to ensure that sudden lighting (such as car headlights), do not deactivate the light • Replacement Head T14/EL



**Nitelighter PEC Head**

- Miniature photocell designed for street and amenity lighting applications
- 70 Lux switching level and works with inductive and resistive loads
- Ideal for applications where space is limited



**Two Part Photocell Light Sensor**

- Designed for street and amenity lighting applications, LED, Halogen or discharge lighting
- 70 Lux switching level & works with inductive & resistive loads
- Low power consumption.
- 300mm length lead from sensor head

# ENERGY MEASURE & MANAGEMENT

Analogue | Digital | Relays |



**ORDER ONLINE**  
[www.electroreplacement.com](http://www.electroreplacement.com)



**FEATURED PRODUCT**

## 25A Energy Meter

- Allows simple sub-metering of a wide variety of applications to measure electricity consumption and create energy
- Usage awareness
- Single phase
- Accurate kWh measurement



2511SO

**BEST SELLER**

## Digital Energy Meter, 22A

- 230V AC (-15% +10%), 50/60 Hz single phase
- Digital single-phase kilowatt-meter
- Two modules width
- Direct measurement up to 22A, Class 2
- Backlit LCD display for good visibility even in darkness



D2221



D2221



**Digital Energy Meter, 22A**

- 230V AC (-15% +10%), 50/60 Hz single phase
- Digital single-phase kilowatt-meter. Two modules width
- Direct measurement up to 22A, Class 2
- Backlit LCD display for good visibility even in darkness

D3221



**Digital Energy Meter, 32A**

- 2 module digital single-phase power meter
- Direct measurement 5 (32)A
- LCD display, 5 digits + 1 decimal non-resettable
- LED consumption indicator

D6521



**Digital Energy Meter, 65A**

- 230V AC (-20% +15%), 50/60 Hz, 65A
- Single phase, two-module analogue, kilowatt meter
- Direct measurement 10 (65)A, Class 1
- Opto-isolator pulse output communication
- Five-digit + 1 decimal place without zeroing

6511SO



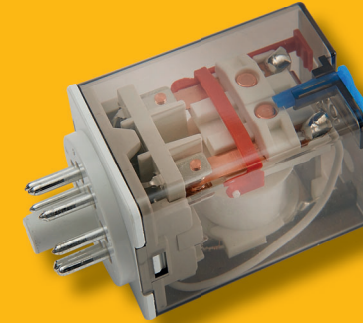
**65A Energy Meter**

- Allows simple sub-metering of a wide variety of applications to measure electricity consumption and create energy usage awareness
- Single phase
- Accurate kWh measurement

## RELAYS

Allows the user to interface different voltage devices in an electrical system, e.g. Door Entry systems using Maglocks

- High current rating - 10A at 250V AC/30V DC
- **8 PIN: Two sets of changeover contacts**
- **11 PIN: Three sets of changeover contacts**
- LED indicator light



Code	Pin	Pole	Voltage	Coil
152E/12A	8	2	12V	AC
152E/24A	8	2	24V	AC
152E/110A	8	2	110V	AC
152E/240A	8	2	240V	AC
152E/12D	8	2	12V	DC
152E/24D	8	2	24V	DC
153E/24A	11	3	24V	AC
153E/110A	11	3	110V	AC
153E/240A	11	3	240V	AC
153E/12D	11	3	12V	DC
153E/24D	11	3	24V	DC
153E/110D	11	3	110V	DC

RS113N



**Relay Base, 11 Pin 3 Pole**

- Base for 153E Relay Series (11 pin)
- DIN rail & surface mounting
- High current rating - 10a @ 250V AC/30V DC
- Standard 11 pin configuration
- LED indicator (relays)

RS083N



**Relay Base, 8 Pin, 2 Pole**

- Base for 152E Relay Series (8 pin)
- DIN rail & surface mounting
- High current rating - 10A @ 250V AC/30V DC
- Standard 8 pin configuration
- LED indicator (relays)

# POWER SUPPLIES

Power Supplies | Fuses |



Listed in  **LUCKINS™**

## FEATURED PRODUCT

### Switch Mode Power Supply, 1A 12V DC

- Full load current at high ambient temperature (+40)
- Mains present and fault/fuse blown LED indicators
- Short circuit and mains transient protection
- Suitable for wall mounting, enclosure incorporates knock-outs
- Additional reserve capacity

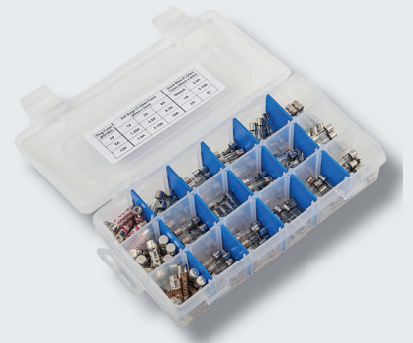


PS12/1

## BEST SELLER

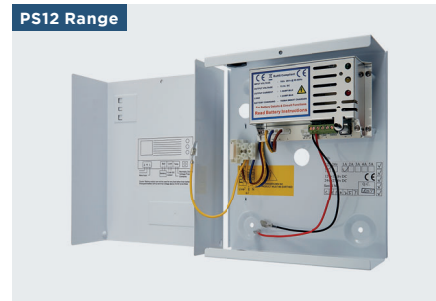
### Contractor Fuse Pack

- Our contractor fuse pack contains the most commonly used fuses
- Fuses come in a storage box with spill-proof latches
- Ideal for electrical/electronic engineers who need a selection of commonly used fuses



CFP





Product Code	Regulated Amperage	Output	Dimensions (mm)
PS1A/12V	1A 12V DC	13.8V	H: 225 x W 195 x D: 80
PS2A/12V	2A 12V DC	13.8V	H: 225 x W 195 x D: 80
PS3A/12V	3A 12V DC	13.8V	H: 225 x W 195 x D: 80
PS5A/12V	5A 12V DC	13.8V	H: 225 x W: 195 x D: 80
PS10A/12V	10A 12V DC	13.8V	H: 392 x W: 285 x D: 165
PS10A/24V	10A 24V DC	24V	H: 392 x W: 285 x D: 165
PS1A/24/L	1A 24V DC	24V	H: 305 x W: 304 x D: 85
PS12/1	1A 12V DC	13.8V	H: 250 x W: 215 x D: 80
PS12/2	2A 12V DC	13.8V	H: 250 x W: 215 x D: 80
PS12/3	3A 12V DC	13.8V	H: 250 x W: 215 x D: 80
PS24/1BB	1A 24V DC	24V DC	H: 330 x 275 x 80
PS24/1	1A 24V DC (Unregulated)	22 - 30V DC	H: 330 x 275 x 80

**Switch Mode Power Supply, In-Line, 1.25A, 12V**

High quality power supplies for use with security and access control equipment.

- All **PS12** models and **PS24/1BB** are switch mode power supplies, offering greater efficiency, lower heat generation and lower power consumption
- All units (exclude **PS24/1**) offer an additional reserve capacity for trickle charging the back-up battery 7AH max (not supplied)
- Full load current at high ambient temperature (+40°C)
- Mains present and fault/fuse blown LED indicators
- Short circuit and mains transient protection
- Suitable for wall mounting, enclosure incorporates knock-outs



**Switch Mode Power Supply, In-Line, 1.25A, 12V**

- For use with a variety of products that require a DC voltage of 12V, either using the adaptor plug or wiring directly to the product • 12V DC, 1.25A regulated output
- Mains lead (2m approx) with a 3A BS1362 plug
- Fly lead (820mm approx)



**Power Supply, 24V**

- For use with electromagnetic door retainers, for loads not exceeding 0.5 amps



**Blister Packed 5Amp Fuses - Pack of 50**

- 5A fuses - pack of 50. Blister packed



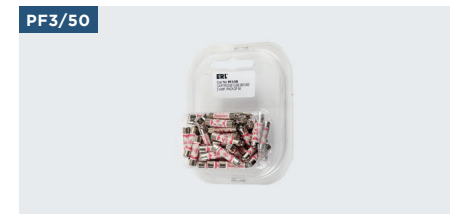
**Contractor Fuse Pack**

- Our contractor fuse pack contains the most commonly used fuses
- Fuses come in a storage box with spill-proof latches
- Ideal for electrical/electronic engineers who need a selection of commonly used fuses



**Multi volt Transformer**

- For use with many applications requiring 4, 8 and 12V AC output
- Self-resetting overload protection
- Double insulated
- Surface mounted



**Blister Packed 3Amp Fuses - Pack of 50**

- 3A fuses - pack of 50. Blister packed

PAGES 70-74

# INDUSTRIAL CONTROLS

Emergency Stop, Stop/Start |  
Control Stations | Isolators



**ORDER ONLINE**  
[www.electroreplacement.com](http://www.electroreplacement.com)



## FEATURED PRODUCT

### Emergency Stop Switch, Push-Twist

- IP66 rated, weather and fire resistant housing
- Push action twist to release
- 1 x N.O and 1 x N.C changeover switches fitted
- Complies to EN418 rated 10A @ 600V
- Rugged polycarbonate construction with 2x 20mm blind threaded conduit entries



SC1/50/N

## BEST SELLER

### Isolators

- Used for isolation of electrical, equipment up to the rated amperage
- Useful for single or 3 phase + neutral applications up to 415V
- IP66 rated. Tough polycarbonate enclosure
- 4 x 25mm top/bottom knockouts with 2 x 20mm adapters supplied
- The isolators are lockable in the off position
- Self-retaining cover screws



ISO Range

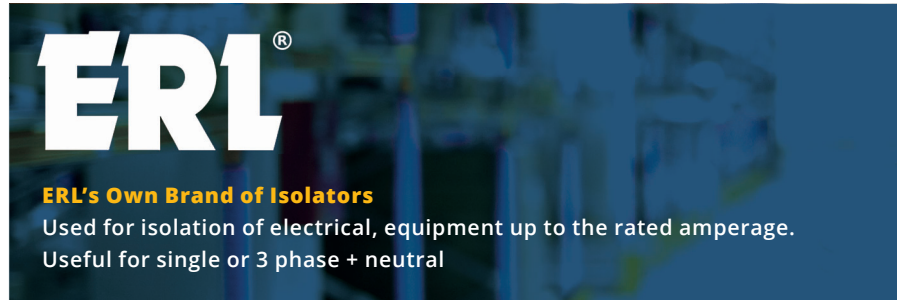




**ERL 3 & 4 Pole Isolator Switch**

- Applications up to 415V
- Useful for single or 3 phase + neutral
- IP66 rated - This unit has a tough polycarbonate enclosure and offers 4x 25mm top/bottom knockouts with 2x 20mm adapters supplied
- The isolators are lockable in the off position
- 4x 25mm top/bottom knockouts with 2x Self-retaining cover screws
- 20mm adapters supplied
- 20 and 35 Amps

Product Code	Amp	Pole
ISO203E/N	20A	3
ISO204E/N	20A	4
ISO353E/N	35A	3
ISO354E/N	35A	4
ISO454E/N	45A	4



**Rotary Isolator, 4 Pole**

- IP65 rated isolators, captive cover screws
- Solid connections for neutral and earth are also provided
- 4x 20/25mm knockouts. The switch is also lockable in the off position by up to 3 separate padlocks
- Accepts padlock hasp size of 6mm
- The rugged polycarbonate body can only be undone in the off position

Product Code	Amp	Pole
RI425	25A	4
RI432	32A	4
RI440	40A	4



**Rotary Isolator, 4 Pole**

- 4 Pole Rotary Isolator
- Rugged polycarbonate construction with 6x 20mm knockouts
- Captive quick-release cover screws
- Switch can be padlocked in two positions
- Accepts padlock hasp size of 6mm
- Fitted with 4 pole switch block plus neutral and earth terminals

Product Code	Amp	Pole
TD425	25A	4
TD463	63A	4
TD480	80A	4



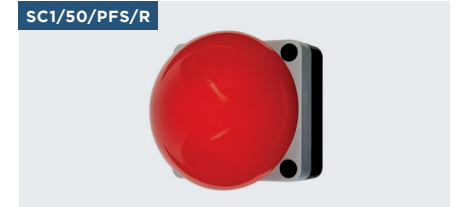
**Red Push Button Switch, Momentary**

- IP66. Internal and external use
- Push button (momentary) switch
- 1 x N.O and 1 x N.C changeover switches fitted
- Rated use 3A @ 230V AC
- Rugged ABS enclosure with 2 x 20mm cable gland entries



**Rotary On/Off Switch, Maintained**

- IP66. Internal and external use
- Rotary (maintained) on/off switch
- 1x N.O and 1x N.C changeover switches fitted
- Rated use 3A @ 230V AC
- Rugged ABS enclosure with 2x 20mm cable gland entries



**Palm/Foot Switch Station, Red, 10A**

- IP66 rated, weather and fire resistant housing
- Hand/foot push action (momentary)
- 1 x N.O and 1 x N.C changeover switches fitted
- Rugged polycarbonate construction
- Rated 10V @ 600V. 85 x 69 x 102.5mm



**Emergency Stop Switch, Push-Twist, 10A**

- IP66 rated, weather and fire resistant housing, push action twist to release. 1 x N.O and 1 x N.C changeover switches fitted. Complies to EN418 rated 10A @ 600V
- Rugged polycarbonate construction with 2x 20mm blind threaded conduit entries



**Emergency Stop Switch with Key Release, 10A**

- Push action with key release
- IP66 rated, 10A @ 600V
- Complies to EN418 rated
- 2 push switches, one N.O, one N.C.
- Latching mechanism (key to reset)



**Double Push Button On/Off Switch**

- Internal and external use 1x N.O and 1x N.C changeover switches fitted. IP66.
- Rated use 3A @ 230V AC
- Rugged ABS enclosure with 2 x 20mm cable gland entries
- Combined start (I), stop (O) push button



**Keyswitch - 2 Position, Momentary**

- IP66. Internal and external use
- Key switch operation - 2 keys supplied
- 1 x N.O and 1 x N.C changeover switches fitted
- Rated use 3A @ 230V AC
- Rugged ABS enclosure with 2 x 20mm cable gland entries



**Combined Emergency Stop/Start Command Switch**

- Flush head. Contact blocks 1x N.O, and 1x N.C
- IP66 rated, weather and fire resistant housing
- Push action with twist release
- Complies to EN418, rated 10A @ 600V
- Snap-on flange and DIN rail brackets, optional

# ASSISTANCE ALERT

Alert Kits | Toilet Alarm Systems |  
Loop Systems | Beam Kits |  
Intercoms |



Listed in  **LUCKINS™**

## FEATURED PRODUCT

### Wireless Intercom Kit

- Up to 2km range (line of sight)
- Loudspeaker headphone socket input (3.5mm)
- Licence exempt, digital display, volume control
- High quality speech, 99 pre-programmed channels
- Lithium battery and mains adaptor supplied

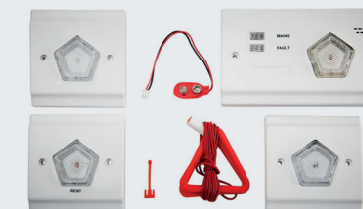


FS-2

## BEST SELLER

### Toilet Alarm System

- Toilet alarms are a cost effective and reliable solution to calling for assistance in the event of an emergency.
- Suitable for use in nursing homes retirement homes, commercial/public building and other areas.
- Integral relay as standard allows integration of the alarm in intruder alarm, call systems etc



DIS1/C4A





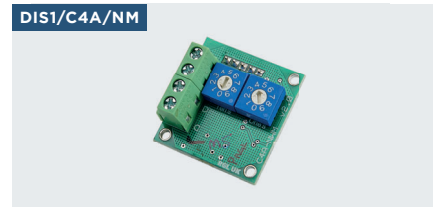
**Toilet Alarm System**

Toilet alarms are a cost effective and reliable solution to calling for assistance in the event of an emergency. Suitable for use in nursing homes retirement homes, commercial/public building and other areas. Integral relay as standard allows integration of the alarm in intruder alarm, call systems etc and switch external components, strobes, sounders, lights etc

- 2 wire installation
- Fits standard wall boxes for flush or surface fitting
- Adjustable sounder in over-door panel
- Battery backup options (9V)
- Use with rechargeable, (DIS1/C4A/BAT) or alkaline (connection supplied) or without battery back-up
- BS8300:2009 + A1:2010 compliant
- Fault and mains indicators
- Integral relay contacts for adding other devices, e.g. lights, sounders or add into building management system (voltage free) 1A max
- Delay on pull cord to minimise false/accidental activation
- Reset button gives visual and audible indication on activation
- **Note: Expandable up to a maximum of 10 call points (additional parts will be required)**

**Each Kit Contains:**

- Alarm controller/power supply
- Call point/sounder
- Ceiling pull cord switch
- Indicator light/sounder (for staffed area)
- Disabled toilet door stickers
- Additional switches/indicator lights etc available



**Network Module**

- Networking accessory for the disabled toilet alarm system (DIS1/C4A)



**10 Zone Network Panel**

- Allows up to 10x DIS1/C4A to be networked
- Displays the activated call point(s)



**Push for Assistance, Single Zone Kit**

- A simple but effective method of calling for assistance or raising an alarm by audible and visual indication
- Expandable, simple to install - 2 wire
- Re-chargeable battery back-up (optional)
- Constant sounder and flashing light alarm



**Call Point, Resettable, Single Zone Kit**

- Yellow call point - resettable (non-glass)
- Simple to install - 2 wire
- Constant sounder and flashing light alarm



**Door Monitor, Single Zone Kit**

- This Kit offers a simple but effective method of calling for assistance or raising an alarm
- Momentary switch, simple to install - 2 wire
- Constant sounder and flashing light alarm
- Several call points may be connected to one control panel
- Additional call point available (Product Code: M1)



**Call Button, Large, Single Zone Kit**

- Single Zone Kit. Large red call button. IP66 rated
- Simple to install - 2 wire
- Constant sounder and flashing light alarm
- Several call points may be connected to one control panel



**Call Button, Single Zone Kit**

- Expandable, simple to install - 2 wire
- Re-chargeable battery back-up (optional)
- Constant sounder and flashing light alarm



**Control Panel, Single Zone Kit**

- 230V AC operation, 2 gang panel
- Relay output for additional devices
- Constant sounder and flashing light alarm



**Portable Loop Amplifier**

- Designed specifically to aid communication with hearing-impaired people who have the "T" position on their hearing aid
- Simple, neat solution, lightweight
- Built-in microphone and rechargeable battery (4hrs usage)
- Battery status and operation LED display
- Microphone input for accessories



**Entry Alert Kit (Reflective Beam)**

- Beam length max 7m. 12V DC operation
- 10m inter-connecting cable supplied
- Adjustable speaker and siren/bell - adjustable 3-30 seconds
- Normally off switch, easy to install (brackets supplied)
- Internal use only



**Entry Alert Kit, Wireless (Reflective Beam)**

- Reflected beam operation wireless standalone beam kit. 100m range
- Chime/siren sounder operates when beam path broken
- Siren time adjustable, 3 to 30 seconds
- Beam length max 7m. Internal/external. IP55 sensor



**Wireless Intercom Kit**

- Up to 2km range (line of sight)
- Loudspeaker headphone socket input (3.5mm)
- Licence exempt, digital display, volume control
- High quality speech, 99 pre-programmed channels
- Lithium battery and mains adaptor supplied



**Additional Wireless Intercom Stations**

- Up to 2km range (line of sight)
- Loudspeaker headphone socket input (3.5mm)
- Licence exempt. Digital display, volume control
- High quality speech, 99 pre-programmed channels
- Lithium battery and mains adaptor supplied



**Additional Speaker Kit for EPRB/K and EPRB/WK**

- Max 2 extension kits per beam
- Integral on/off switch
- Fitted 10m lead with phono plug
- Brackets and screws supplied



**Kitchen Call Kit - 1 and 2 Station Available**

- Allows hands-free conversation
- Ideal for commercial kitchens and restaurants
- Adjustable volume, surface mounted panel
- Expandable up to 3 handsets

**Each Kit Contains:**

- Door Entry Panel
- Telephone Handset(s) HT3003W
- Power Supply/Amplifier
- (NH200TV) for cable runs up to 100m and for powering a 12V AC lock (EDL)



**Reflective Photocell Beam Kit**

- Easy to set up. Large 80mm diameter reflector
- Beam length max. 14m. Pre-wired 2m cable
- Wide voltage range. Adjustable sensitivity and response
- Only requires connection to photocell volt free contacts



**Digital Intercom System - 2 Way Starter Kit**

- Master to Master system
- Desk or wall mounting, hands free operation
- Good speech quality, simultaneous two-way speech
- Electronic call tone, speech and call tone volume control
- Expandable up to 12 stations



PAGES 80-85

# AV, CLOCKS, TOOLS CABLE PROTECT

Safety Workwear | Tools |  
Clocks | TV Accessories | Cable Protect



**ORDER ONLINE**  
[www.electroreplacement.com](http://www.electroreplacement.com)



## FEATURED PRODUCT

### High Contrast, Wall Clock, 30cm, Yellow

- Colours used are ideal for those with sight limitations
- Oversized with distinct hands for easy reading
- Displays day, date and month in UK format
- Easy to set.
- Quartz movement



CO1614/YSQ

## BEST SELLER

### Safety Glasses with Twin LED Light (3 Lumens per light)

- Clear anti-fog lens with black frame and pivoting LED temples
- Up to 50 hours of use before replacing batteries
- Rubber temple tips and nose pads
- High impact, scratch resistant polycarbonate lens provides 99% UVA/B/C protection

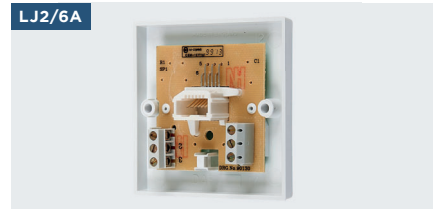


LEDEW



**Single Surface Master Socket**

- A master socket is the first socket where the telephone line enters a property and broadband signal is at its strongest
- All other extensions and sockets are then connected to the master
- Screw terminals



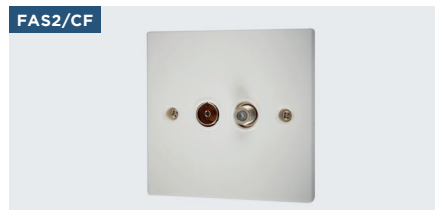
**Single Surface Extension Socket**

- Telephone extension socket to connect with master socket
- Screw terminals



**Single Flush Extension Socket**

- Telephone extension socket to connect with master socket
- Screw terminals



**Twin 1x F Type & 1x Co-axial Socket**

- Twin 1x F type & 1x co-axial socket
- For SKY or SKY+ installations
- White plastic screw terminals
- Co-axial socket and an F socket outlet



**Co-Axial Plug RG6 F Type**

- F type screw connector suitable for domestic terrestrial, cable, and satellite TV installations where the delivery of very high frequency information is required
- All metal body
- F plug ensures solid connection between cable and plug



**Co-Axial Plug, Male**

- Co-axial plug, male, chrome



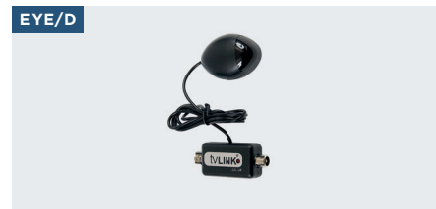
**Co-axial Plug, Female, Chrome**

- Co-axial plug, female, chrome



**Aerial Splitter, 1 in 2 out**

- 1 in 2 out aerial splitter for co-axial cable



**Digieye Remote Control Sensor**

- The EYE/D is designed to remotely control your SKY set-top box from another location via co-ax, anywhere within your home
- Compatible with UK digital receivers with an RF-out 2 output
- Note: remote control must operate within 30-40kHz range



**Shielded Triple Co-Axial Socket**

- BT slave socket for creating a signal distribution system (for use with FAS3/SH)
- Easily clips into the FAS3/SH
- Terminate using our IDC/M punch down tool



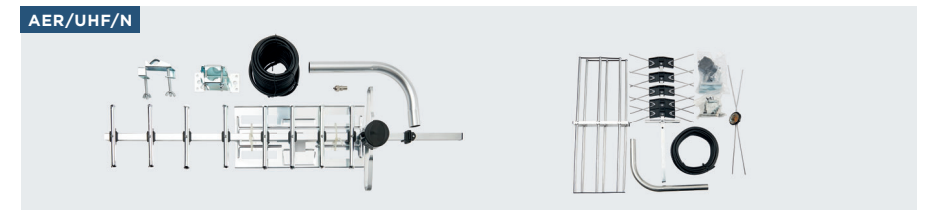
**UHF Socket (FAS3/SH)**

- 1 gang co-axial socket
- UHF phono socket for creating a signal distribution system (for use with FAS3/SH)
- Easily clips into the FAS3/SH



**Integrated TV, Video, Satellite, Radio and CCTV Control Box - 4 Way or 8 Way**

- A fully integrated TV, video, satellite, radio and CCTV distribution system
- Normally placed in the loft, a utility room or under the stairs
- Suitable for up to 8 TVs. The Loftbox has 6 inputs, combined into one single down cable
- 6 inputs: UHF Analogue, TV/UHF, Digital TV, FM Radio/DAB (Digital Audio Broadcasting), CCTV (modulated output), Satellite



**Aerial Kits - 10/32 Element**

- Complete TV aerial kit suitable for outdoor or loft installations
- Suitable for receiving Freeview and other digital signals
- Ideal for use as a primary aerial or can be used as a secondary aerial to connect an additional TV
- Suitable for loft or wall mounting



**BT Socket (FAS3/SH)**

- BT slave socket for creating a signal distribution system (for use with FAS3/SH)
- Easily clips into the FAS3/SH



**RJ45 Socket (FAS3/SH)**

- 1 gang Ethernet socket
- RJ45 Ethernet socket for creating a signal distribution system for use with FAS3/SH
- Easily clips into the FAS3/SH



CO1614/WSQ & CO1614/YSQ



High Contrast, Wall Clock, 30cm, White

- Oversized with distinct hands for easy reading
- Displays day, date and month in UK format
- Easy to set with quartz movement

CO10/AL/RCM



ACCTIM Radio Controlled Clock, 225mm dia, 12/24

- Radio controlled for increased accuracy and automatic summer/winter setting
- Tuned to UK's atomic clock transmitter
- Brushed aluminium case and glass lens
- Sweep second hand, Battery operated (1x AA not supplied)

CO10/WN



ACCTIM Commercial Clock, 255mm dia, 12/24 Hour

- Quartz movement
- Battery operated (1x AA not supplied)
- White plastic case and lens
- Sweep second hand

CO145W/N



ACCTIM Commercial Clock, 355mm dia, 12/24 Hour

- Quartz movement
- Battery operated (1x AA not supplied)
- White plastic case and glass lens
- Sweep second hand

CO9W/RCM



Commercial Clock, 230mm dia

- Radio controlled for split second accuracy
- Automatic set and updated
- Full numbered dial
- Plastic case and lens
- Requires 1x AA battery (not supplied)

CO12B/N



ACCTIM Commercial Clock, 300mm dia, 12/24 Hour

- Quartz movement
- Battery operated (1x AA not supplied)
- Black plastic case and plastic lens
- Sweep second hand

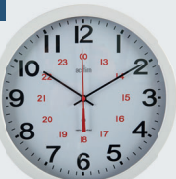
CO10/AL/RC



ACCTIM Radio Controlled Clock, 250mm dia

- Radio controlled for increased accuracy and automatic summer/winter setting, Tuned to UK's atomic clock transmitter
- Brushed aluminium case and glass lens
- Sweep second hand
- Battery operated (1x AA not supplied)

CO125W/RCM



ACCTIM Radio Controlled Clock, 300mm dia

- Radio controlled for increased accuracy and automatic summer/winter setting
- Tuned to UK's atomic clock transmitter
- White metal case and glass lens
- Sweep second hand
- Battery operated (1x AA not supplied)

CO12W/N



ACCTIM Commercial Clock, 300mm dia, 12/24 Hour

- Quartz movement
- Battery operated (1x AA not supplied)
- White plastic case and plastic lens
- Sweep second hand

CABLE PROTECT



Cableprotect, Grey - 2m pack

- Safely cover and protect cables running across floors
- Useful for covering temporary cable runs
- Split along the base to allow easy installation without needing to disconnect cables
- Excellent wear characteristics

Code	Length	Fits Cable size
CP909/G	9m	1x 9mm or 2 x 7mm
CP1202/G	2m	1x 12mm or 2 x 9mm
CP1609/G	9m	1x 16mm or 2 x 13mm

HS01/NB



Hole Cutter, Multi-size, 30-163mm

- Adjustable radius arm (30mm -163mm)
- Designed for cutting holes in plywood, plasterboard and acrylic sheets up to 25.4mm thick
- Fitted with transparent cowl to collect dust and debris
- Counter balance weights to reduce vibration included
- Additional blades: HSB/4D

MT1



Digital Multimeter with Shock Resistant PVC Holster

- Measures voltage, current and resistance
- Supplied with test leads, holster and battery
- 19 testing ranges, 7 functions
- Compact size 126 x 70 x 29mm.
- Large LCD display (0.5")
- Complies to EN 61010-1: 2010

BC5



Bump Cap, 5cm Peak, Black/Grey

- ABS vented shell with soft inner foam cushion
- Size can be adjusted with an elasticated strap and adjustable clasp to give a comfortable, secure fit
- Reflective piping to peak and sides adds extra visibility
- Provides protection from bumps and scrapes
- Ideal for auto mechanics, trade persons, meter readers, and other industries when full hard-hat protection is not required
- CE EN812:2012 compliant
- 5cm peak

LEDEW



Safety Glasses W/Twin LED Light

- Clear anti-fog lens with black frame and pivoting LED temples
- Up to 50 hours of use before replacing batteries
- Rubber temple tips and nose pads
- High impact, scratch resistant polycarbonate lens provides 99% UVA/B/C protection



## Electro-Replacement Limited

1 Moor Park Industrial Centre,  
Tolpits Lane, Watford,  
Herts WD18 9EU

### Sales Orders

T: 01923 255344

E: [sales@electroreplacement.com](mailto:sales@electroreplacement.com)

F: 01923 255829

### Technical Advice Service

Monday to Thursday

T: 01923 220277

E: [technical@electroreplacement.com](mailto:technical@electroreplacement.com)



All goods sold subject to Standard Conditions of Sale. Our policy is one of continuous improvement and we reserve the right to alter product specifications in this catalogue.

All information in this catalogue is given in good faith and believed to be correct at the time of publication January 2021.

E&O.E. © Copyright of Electro-Replacement Limited 2020.

[www.electroreplacement.com](http://www.electroreplacement.com)

ERL Proud Partners

