



ORBIS TECNOLOGÍA ELÉCTRICA S.A.

Lérida, 61. 28020 MADRID - SPAIN

+34 91 567 22 77 / +34 91 567 22 90

export@orbis.es | servicio.tecnico@orbis.es

www.orbis.es | www.orbisenergainteligente.com



The General Conditions of Sale and Software License Use are available at www.orbis.es. ORBIS TECNOLOGÍA ELÉCTRICA, S.A. reserves the right to modify all or part of the technical features specified in this catalog.

ORBIS

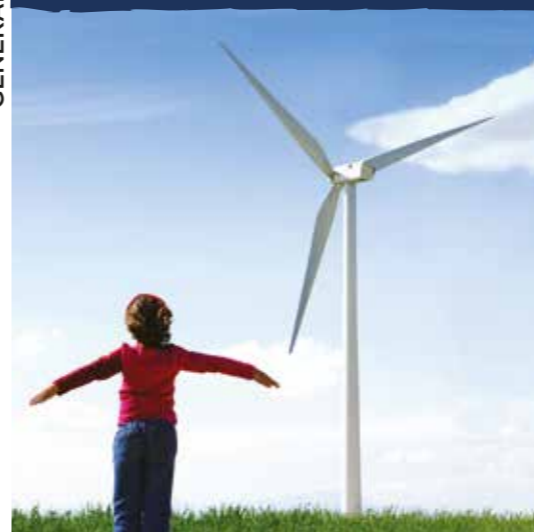


energía inteligente®



GENERAL PRODUCT LIST
March 2018. Cod. 900280

GENERAL PRODUCT LIST



TIMING

- MOTION / PRESENCE DETECTORS
- CLIMATE CONTROL AND HOME AUTOMATION
- ENERGY MEASUREMENT AND MANAGEMENT
- OUTDOOR LIGHTING MANAGEMENT
- ELECTRIC MOBILITY

orbis.es




orbis.es
orbisenergainteligente.com





ORBIS TECNOLOGÍA ELÉCTRICA S.A.

 Lérida, 61. 28020 MADRID - SPAIN

 +34 91 567 22 77 / +34 91 567 22 90

 export@orbis.es | servicio.tecnico@orbis.es

 www.orbis.es | www.orbisenergíainteligente.com

65 YEARS OF ENERGY

Always with you, innovating every day



PRODUCT

More than 600 products, with the largest multi-specialist offer in the electrical installation, measuring, renewable energies, home automation, public lighting and industry sectors. Integrated with powerful data management tools and connectivity of products on the Internet, applications and systems.

Our motto, “energía inteligente”, embodies a firm commitment to sustainability, management and energy efficiency, and an industrial culture and offering of “connected” products in systems and applications integrated with industry 4.0 environments, augmented reality, artificial intelligence (AI), smart cities or the Internet of Things (IoT)/energy applications).



QUALITY

The experience we have gained over the past 65 years and our powerful own engineering allow us to manage and control the development of our products, from the design and manufacture of components to assembly and laboratory checks.

All the above, along with exhaustive company and product audits, allows us to certify conformity with European and international quality and safety standards, thus achieving a higher grade of customer satisfaction.





SERVICE

We work hard to ensure the functionality of our products, information and training.

We maintain a “direct line” with our engineering department via diverse channels such as product promoters, on-site technical and telephone assistance and our websites, orbis.es and energiainteligente.com. If you prefer, you can follow us on Facebook, Instagram and LinkedIn where we provide information on forthcoming events, projects and new products.



INTERNATIONAL PRESENCE

During these 65 years we have manufacture over 25 million products, installed in more than 60 countries. We have consolidated our brand through our four production centres in Europe, which distribute electrical material to more than 100 importers, distributors and collaborators across the world. We have our own offices in Spain, Italy and Germany.

Above all, thanks to the trust and loyalty of our customers and our dedicated, highly qualified, committed staff, we are one of the top European manufacturers of products and services for the energy management and efficiency industry.



INDEX

TIMING

ANALOGUE TIME SWITCHES

MODULAR	7
SURFACE / PANEL / DIN	8
INDUSTRIAL	9
INSTALLATION BOX	10
PLUG-IN	10

DIGITAL TIME SWITCHES

MODULAR	11
SURFACE / PANEL / DIN	13
INDUSTRIAL	14
PLUG-IN	14

STAIRCASE TIMERS

MODULAR	14
SURFACE	15

TIMERS AND REGULATORS FOR JUNCTION / INSTALLATION BOX

	15
--	----

TOKEN OR COIN TIMERS

	16
--	----

hour meters

	17
--	----

LIQUID LEVEL RELAYS

	18
--	----

MOTION / PRESENCE DETECTORS

MOTION DETECTORS

SURFACE CEILING	20
FLUSH CEILING	20
ON WALL	21
ON WALL OR CEILING	21
CONCEALED	22
INSTALLATION BOX	22

PRESENCE DETECTORS

SURFACE CEILING	22
FLUSH CEILING	23
CONCEALED	24
ACCESSORY - REMOTE CONTROL	24

CEILING LAMPS WITH DETECTOR

BUILT-IN LED	24
WITH LAMPHOLDER	25

LED LUMINAIRES WITH DETECTOR

	25
--	----

CLIMATE CONTROL AND HOME AUTOMATION

THERMOSTATS

ANALOGUE	27
DIGITAL	27
TOUCHSCREEN	28

CHRONOTHERMOSTATS

ANALOGUE	28
DIGITAL	28
TOUCHSCREEN	31
ACCESSORIES	32

PHONE CONTROLLERS

	33
--	----

CONTROL DEVICES FOR INSTALLATION / JUNCTION BOX

	33
--	----

LED COURTESY / EMERGENCY LIGHTS

	35
--	----

USB SOCKETS

	36
--	----

DOOR BELLS

	36
--	----

GAS DETECTORS

	36
--	----

ENERGY MEASUREMENT AND MANAGEMENT

MODULAR ENERGY METERS

SINGLE-PHASE / ANALOGUE	38
SINGLE-PHASE / DIGITAL	39
THREE-PHASE / ANALOGUE	40
THREE-PHASE / DIGITAL	40

MULTIFUNCTION METERS

SINGLE-PHASE	40
THREE-PHASE	41

DIGITAL METERS

	42
--	----

NETWORK ANALYSERS

	43
--	----

ENERGY MANAGERS

	45
--	----

ENERGY MEASUREMENT AND MANAGEMENT ACCESSORIES

	46
--	----

LOAD MANAGERS

	47
--	----

BILLING ENERGY METERS

SINGLE-PHASE	48
THREE-PHASE	48

PRIME SMART METERS

	48
--	----

INDEX



OUTDOOR LIGHTING MANAGEMENT

ASTRONOMIC TIME SWITCHES	51
TWILIGHT SWITCHES	53
HIGH PERFORMANCE LIGHT STABILISERS-DIMMERS	54
SMART CITIES / REMOTE MANAGEMENT	55



ELECTRIC MOBILITY

ELECTRIC VEHICLE CHARGING SYSTEMS

EV SMART CHARGERS FOR PRIVATE ENVIRONMENTS	59
EV SMART CHARGERS FOR PUBLIC ENVIRONMENTS	61

SYMBOLS USED



OUR PRODUCT SELECTION



REPLACEABLE BATTERY



SUPPLY 230 V AC



2 HOURS BATTERY



HIGH FREQUENCY TECHNOLOGY



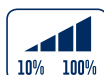
TEMPERATURE COMPENSATOR



ZERO-CROSSING RELAY



DOUBLE LIGHTING LEVEL



LIGHT DIMMER



DYNAMIC LIGHTING CONTROL



BLUETOOTH COMMUNICATION

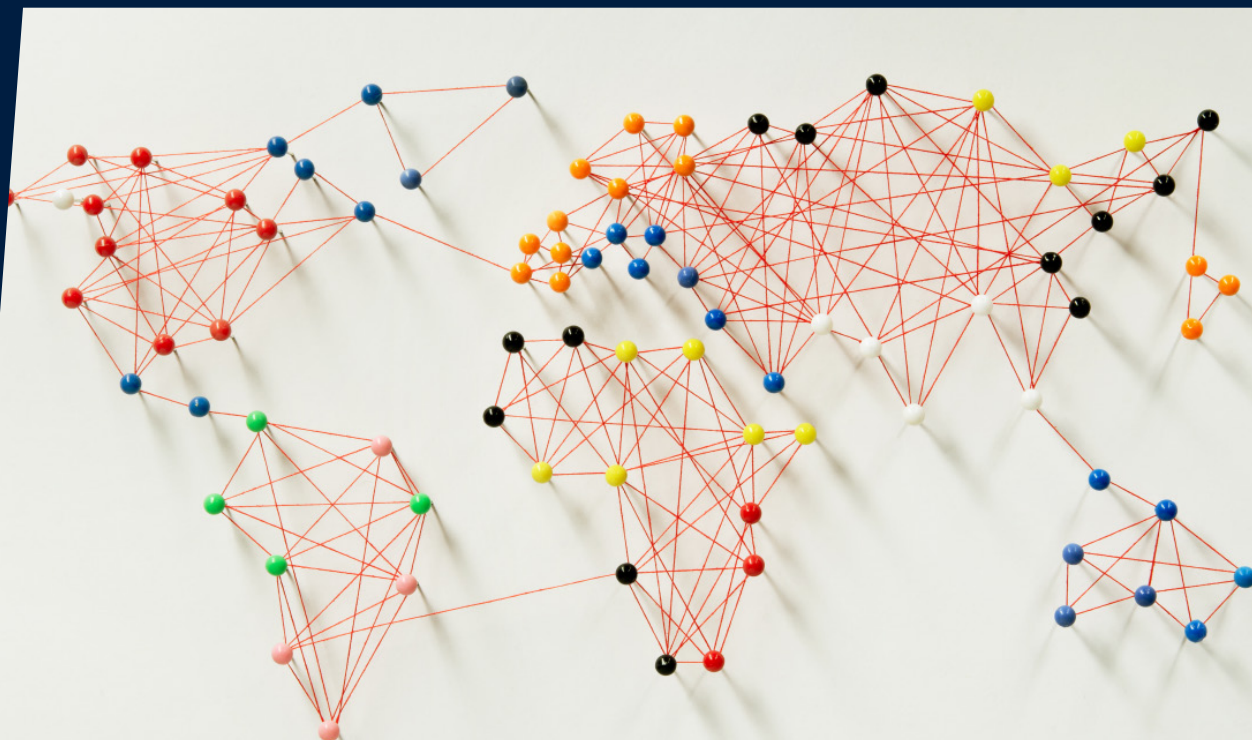


COMPATIBLE WITH REMOTE CONTROL MANDO CR



TOUCH SCREEN

We are present in more than 60 countries,
consult your nearest distributor at export@orbis.es





TIMING



ANALOGUE TIME SWITCHES

MODULAR	7
SURFACE / PANEL / DIN	8
INDUSTRIAL	9
INSTALLATION BOX	10
PLUG-IN	10

DIGITAL TIME SWITCHES

MODULAR	11
SURFACE / PANEL / DIN	13
INDUSTRIAL	14
PLUG-IN	14

STAIRCASE TIMERS

MODULAR	14
SURFACE	15

TIMERS AND REGULATORS FOR JUNCTION / INSTALLATION BOX 15

TOKEN OR COIN TIMERS 16

HOUR METERS 17

LIQUID LEVEL RELAYS 18

ANALOGUE TIME SWITCHES / MODULAR



UNO

- DIN rail mount, one module wide (17.5 mm).
- Unbreakable casing that supports excessive tightening torque.
- Manual control switch with three settings: automatic, on and off permanent.



Code	Reference	Programming	Battery back up
OB400132	UNO D_230 V ac 50/60 Hz	Daily / 15 min	No
OB400232	UNO QRD_230 V ac 50/60 Hz	Daily / 15 min	150 h
OB400242	UNO QRD_120 V ac 50/60 Hz	Daily / 15 min	150 h
OB400432	UNO QRS_230 V ac 50/60 Hz	Weekly / 2 h	150 h



INCA DUO

- DIN rail mount, two modules wide (35 mm).
- Changeover contact with NO and NC output.
- Manual control switch with two settings: automatic and permanent on.

Code	Reference	Programming	Battery back up
OB330132	INCA DUO D_230 V ac 50/60 Hz	Daily / 15 min	No
OB330232	INCA DUO QRD_230 V ac 50/60 Hz	Daily / 15 min	100 h
OB330432	INCA DUO QRS_230 V ac 50/60 Hz	Weekly / 2 h	100 h



DUO

- DIN rail mount, two modules wide (35 mm).
- Front sphere easy to read and programme.
- Changeover contact with NO and NC output.



Code	Reference	Programming	Battery back up
OB291032	DUO D_230 V ac 50 Hz	Daily / 30 min	No
OB292032	DUO QRD_230 V ac 50/60 Hz	Daily / 30 min	150 h
OB293032	DUO QRS_230 V ac 50/60 Hz	Weekly / 2,5 h	150 h



SUPRA

- DIN rail mount, two and a half modules wide (44 mm).
- Changeover contact with NO and NC output.
- Manual control switch with three settings: automatic, on and off permanent.
- Particularly useful for cancelling programming during holiday periods.



Code	Reference	Programming	Battery back up
OB290132N	SUPRA D_230 V ac 50/60 Hz	Daily / 15 min	No
OB290232N	SUPRA QRD_230 V ac 50/60 Hz	Daily / 15 min	150 h
OB290242N	SUPRA QRD_120 V ac 50/60 Hz	Daily / 15 min	150 h
OB290332N	SUPRA QRS_230 V ac 50/60 Hz	Weekly / 2 h	150 h

ANALOGUE TIME SWITCHES SURFACE / PANEL / DIN

CRONO

- DIN rail or flush mount (65 x 65 mm).
- Double sphere versions have two changeover contacts for daily-daily or daily-weekly programming.
- Clear sealable window to prevent unauthorised tampering.

Code	Reference	Programming	Battery back up
OB050523	CRONO D_230 V ac 50/60 Hz	Daily / 15 min	No
OB050623	CRONO QRD_230 V ac 50/60 Hz	Daily / 15 min	100 h
OB050823	CRONO QRDD_230 V ac 50/60 Hz	Daily-Daily / 15-30 min	100 h
OB051023	CRONO QRS_230 V ac 50/60 Hz	Weekly / 2 h	100 h
OB051223	CRONO QRSD_230 V ac 50/60 Hz	Weekly-Daily / 2 h-30 min	100 h


ALPHA

- DIN rail or flush mount (65 x 65 mm).
- Front sphere easy to programme by displacement of pins.
- Manual control switch with three settings: automatic, on and off permanent.
- Particularly useful for checking the operation of machines or installations.

Code	Reference	Programming	Battery back up
OB270023	ALPHA D_230 V ac 50/60 Hz	Daily / 15 min	No
OB270123	ALPHA QRD_230 V ac 50/60 Hz	Daily / 15 min	100 h
OB270223	ALPHA S_230 V ac 50/60 Hz	Weekly / 2 h	No
OB270323	ALPHA QRS_230 V ac 50/60 Hz	Weekly / 2 h	100 h


MINI

- DIN rail or flush mount.
- Front sphere easy to programme by displacement of pins.
- Manual control switch with three settings: automatic, on and off permanent.
- Sealable window and terminal cover to prevent unauthorised tampering.

Code	Reference	Programming	Battery back up
OB250132	MINI D_230 V ac 50/60 Hz	Daily / 15 min	No
OB250232	MINI QRD_230 V ac 50/60 Hz	Daily / 15 min	100 h
OB251332	MINI QRS_230 V ac 50/60 Hz	Weekly / 2 h	No

MINI T

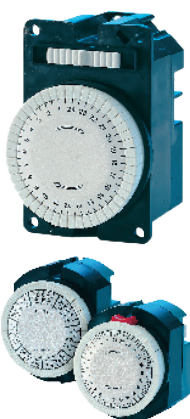
- DIN rail or flush mount (66 x 66 mm).
- Compact design and installation base with precut holes for supply through cable track or tube when flush mounted.
- Faston connectors 6.3x0.8 mm for mounting on electrical cabinet door.



Code	Reference	Programming	Battery back up
OB251032	MINI T D_230 V ac 50/60 Hz	Daily / 15 min	No
OB251232	MINI T QRD_230 V ac 50/60 Hz	Daily / 15 min	100 h
OB251249	MINI T QRD_120 V ac 50/60 Hz	Daily / 15 min	100 h
OB252332	MINI T QRS_230 V ac 50/60 Hz	Weekly / 2 h	100 h



ANALOGUE TIME SWITCHES / INDUSTRIAL



SINCRO

- Designed for mounting in electrical machinery and equipment such as heating or ventilation systems, water pumping, etc.
- Different timing, fixing, contact and other options.
- Faston 6.3 x 0.8 mm connectors.

Code	Reference	Programming	Manual Switch	Contact	Colour	Fixing
OB284101	SINCRO 341.124.8.000_230 V ac 50 Hz	Daily / 30 min	✓	N/O	○	Front / Base
OB284103	SINCRO 341.498.8.000_230 V ac 50 Hz	Daily / 15 min	✓	C/O	●	Front / Base
OB280424	SINCRO 351.001_230 V ac 50 Hz	Weekly / 2 h	✓	C/O	●	Front / Base
OB280408	SINCRO 346.001.8.000_230 V ac 50 Hz	Daily / 30 min	X	N/O	●	At front
OB280471	SINCRO 346.034.8.000_230 V ac 50 Hz	Daily / 30 min	✓	N/O	○	On base
OB284659	SINCRO 346.046.8.000_230 V ac 50 Hz	Daily / 30 min	✓	N/O	●	On base
OB280421	SINCRO 346.066.8.000_230 V ac 50 Hz	Daily / 30 min	X	N/O	○	On base
OB2834615	SINCRO 346.253.8.000_230 V ac 50 Hz	Daily / 15 min	X	C/O	○	At front
OB284614	SINCRO 346.602.8.000_230 V ac 50 Hz	Start 60 min stop 5 min	X	C/O	○	At front
OB284643	SINCRO 346.606.8.000_230 V ac 50 Hz	Start 5h 45 min stop 15	X	C/O	○	On base
OB284602	SINCRO 346.815.8.000_230 V ac 50 Hz	Countdown / 150 min	✓	N/O	○	At front
OB284628	SINCRO 346.818.8.000_230 V ac 50 Hz	Countdown / 60 min	X	N/O	○	At front
OB284632	SINCRO 346.830.8.000_230 V ac 50 Hz	Countdown / 60 min	✓	N/O	○	At front
OB284660	SINCRO 346.840_230 V ac 50 Hz	Countdown / 150 min	X	N/O	○	At front
OB284635	SINCRO 346.842.8.000_230 V ac 50 Hz	Countdown / 15 h	X	N/O	○	Frontal / Base
OB280473	SINCRO 356.038.8.000_230 V ac 50 Hz	Weekly / 1h 45 min	✓	N/O	●	At front



MODUL

- Flush mount with fastening screws.
- Configurable with or without manual switch, with or without hourly indexes.
- Faston 6.3 x 0.8 mm connectors.

Code	Reference	Programming	Hourly Indexes	Manual Switch	Reserve
OB361100	MODUL D (11)_230 V ac 50/60 Hz	Daily / 15 min	✓	✓	Without
OB36QD0000	MODUL QRD (00)_230 V ac 50/60 Hz	Daily / 15 min	X	X	> 100 h
OB36QD0100	MODUL QRD (01)_230 V ac 50/60 Hz	Daily / 15 min	X	✓	> 100 h
OB361012	MODUL QRD (10)_230 V ac 50/60 Hz	Daily / 15 min	✓	X	> 100 h
OB361011	MODUL QRD (11)_230 V ac 50/60 Hz	Daily / 15 min	✓	✓	> 100 h
OB36S0000	MODUL S (00)_230 V ac 50/60 Hz	Weekly / 2 h	X	X	Without
OB36QS0100	MODUL QRS (00)_230 V ac 50/60 Hz	Weekly / 2 h	X	X	> 100 h
OB36QS1100	MODUL QRS (11)_230 V ac 50/60 Hz	Weekly / 2 h	✓	✓	> 100 h



SUE

- Mechanical flush mount time switch.
- Large load capacity, up to 30 A.
- Daily programming with minimal operations of 1 hour.

Code	Reference	Programming
OB010315	SUE 1X30 120/230 V ac 50/60 Hz	Daily / 1 h



FRI 60

- Time switch for programming defrosting operations in cold rooms.
- The defrosting cycle commences by disconnecting the compressor and fan, and then connecting the heating element. After the established defrosting period, the heating element is disconnected and the compressor is connected, and after a time delay, the fan will be connected.
- Programming of operations with a variable duration (5 to 50 minutes)

Code	Reference	Programming
OB150533	FRI 60_230 V ac 50/60 Hz	5 - 50 min

ANALOGUE TIME SWITCHES / INSTALLATION BOX

ILUMATIC 248 / 348

- Programmer for mounting in electrical box of 65 x 65 mm.
- In just a few minutes the manual switch is replaced by this programmer for internal or external lighting, pre-heating of thermo heating systems, access doors, coffee machines, etc.
- Manual control switch with three settings: automatic, on and permanent off.

Code	Reference	Programming	Manual Control
OB1618248	ILUMATIC 248 D-30_230 V ac 50 Hz	Daily / 30 min	Separate
OB1618348	ILUMATIC 348 D-30_230 V ac 50 Hz	Daily / 30 min	On sphere
OB285803	ILUMATIC 358 S-1h 45min_230 V ac 50 Hz	Weekly / 1h 45 min	On sphere


ROLLMATIC 248

- Programmer for awnings and blinds for mounting in electrical box of 65 x 65 mm.
- Ideal for programming raising and lowering depending on the opening hours, in homes, offices, companies or schools.
- A second switch allows the user to raise or lower the awning or blind manually.

Code	Reference	Programming
OB280493	ROLLMATIC 248 D-30_230 V ac 50 Hz	Daily / 30 min


METRO

- Programmer for mounting in UK-type electrical box of 86 x 86 mm.
- LED lamp operating indicator.
- Manual control switch with three settings: automatic, on and permanent off.

Code	Reference	Programming
OB284318	METRO D_230 V ac 50 Hz	Daily / 30 min

ANALOGUE TIME SWITCHES / PLUG-IN

CONTROL

- Plug-in connection to Schuko plug with ground connection (4.8 mm²).
- Fitted with child protection.
- Manual control switch with three settings: automatic, on and permanent off.

Code	Reference	Programming
OB161533	CONTROL D-15_230 V ac 50 Hz	Daily / 15 min
OB161532	CONTROL D-30_230 V ac 50 Hz	Daily / 30 min
OB161632	CONTROL S-1h 45 min_230 V ac 50 Hz	Weekly / 1h 45 min


DOMO

- Plug-in connection to Schuko plug with ground connection (4.8 mm²).
- Front sphere easy to read and programme. Fitted with child protection and with a version for outdoor use.
- Daily, weekly or countdown versions.

Code	Reference	Programming
OB284015	DOMO M-60_230 V ac 50 Hz	60 min countdown
OB162332	DOMO M-150_230 V ac 50 Hz	150 min countdown
OB284007	DOMO M-900_230 V ac 50 Hz	900 min countdown
OB16223232	DOMO D T-15_230 V ac 50 Hz	Daily / 15 min
OB162232	DOMO D T-30_230 V ac 50 Hz	Daily / 30 min
OB162432	DOMO S T-1h 45 min_230 V ac 50 Hz	Weekly / 1h 45 min
OB162232I	DOMO D T-15 OUTDOORS_230 V ac 50 Hz	Daily / 15 min
OB162432I	DOMO S T-1h45m OUTDOORS_230 V ac 50 Hz	Weekly / 1 h 45 min

DIGITAL TIME SWITCHES / MODULAR



DATA UNO

- Only 1 DIN module wide (17.5 mm).
- Daily (DATA UNO D) or weekly programming (DATA UNO S).
- 1 potential-free circuit normally open.
- Backlight for better viewing of screen.

Code	Reference	Programming
OB178512	DATA UNO D_230 V ac 50/60 Hz	Daily / 30 min
OB178612	DATA UNO S_230 V ac 50/60 Hz	Weekly / 2 h



DATA MICRO + / DATA MICRO 2+

- Programming through icon menu.
- Up to 32 daily and weekly programmes.
- One or two switching output contacts.

Code	Reference	Output circuit
OB172012N	DATA MICRO +_230 V ac 50/60 Hz	1 changeover
OB172062N	DATA MICRO +_120 V ac 50/60 Hz	1 changeover
OB171912N	DATA MICRO 2+_230 V ac, 50/60 Hz	2 changeover
OB171942N	DATA MICRO 2+_120 V ac 50/60 Hz	2 changeover



DATA LOG / DATA LOG 2

- Digital time switch for programming by seconds, days or weeks.
- Easy to programme guided by text menus in different languages.
- Bluetooth programming port and optional reading via smartphone.
- Allows 4 special or holiday programmes per year.
- Backlit display to improve viewing, even in the dark.

Code	Reference	Output circuit
OB174012	DATA LOG_230 V ac 50/60 Hz	1 changeover
OBXXXXX	DATA LOG_120 / 230 V ac 50/60 Hz	1 changeover
OB175012	DATA LOG 2_230 V ac 50/60 Hz	2 changeover
OBXXXXX	DATA LOG 2_120 / 230 V ac 50/60 Hz	2 changeover



BLUETOOTH DONGLE

- Allows two-way Bluetooth connection with the following models: DATA LOG, DATA LOG 2, ASTRO NOVA CITY and ASTRO UNO.
- Compatible with:
 - Apple (iPhone 4S or later version, iPad 3 or later version)
 - Android (version 4.3 or later and devices compatible with Bluetooth 4.0 LE)
- Free application available on Google Play and App Store.

Code	Reference
OB709971	BLUETOOTH DONGLE



DATA LOG BLUETOOTH / DATA LOG 2 BLUETOOTH

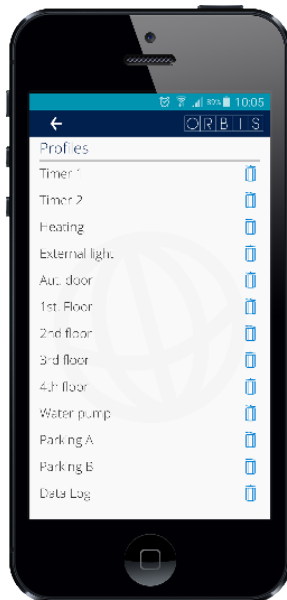
- Built-in two-way Bluetooth connection for programming and reading via smartphone.
- Operations by seconds, minutes, days or weeks with 4 annual programmes.
- Exchangeable front battery.
- Backlit display to improve viewing, even in the dark.



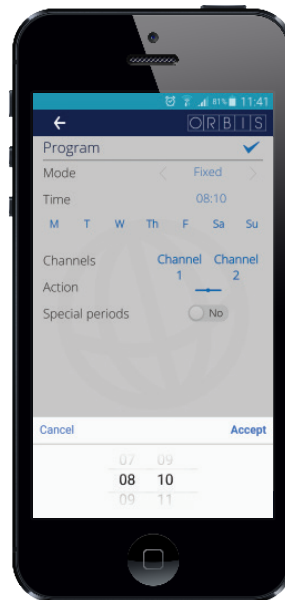
Code	Reference	Output circuit
OB171012	DATA LOG BT_230 V ac 50 Hz	1 changeover
OB171512	DATA LOG 2 BT_230 V ac 50 Hz	2 changeover

DATA LOG App

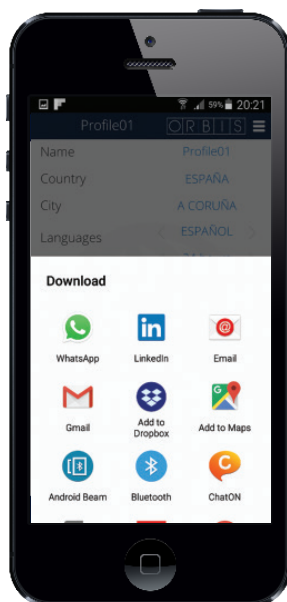
- Easy editing of programmes with selection of days, hours and type of operation.
- Store the programmes in your smartphone.
- Monthly programming.



Stores as many time switches as you want.



Easily creates new programmes, operating cycles or pulses per second.



Shares programmes with other users.



Consultation of monthly programmes with calendar.



DATA ANUAL

- Digital time switch for programming by seconds, days, weeks or months.
- 4 special periods and 20 vacation days. The equipment performs no programming during holiday periods.
- Keyboard blocked by password.

Code	Reference	Output circuit
OB176100	DATA ANUAL_230 V ac 50/60 Hz	2 changeover



DATA MULTI ANUAL

- Digital time switch with four output contacts for programming by seconds, days, weeks or months.
- Large memory capacity, up to 100 programmes.
- Possibility of creating special programmes between two dates.

Code	Reference	Output circuit
OB177200	DATA MULTI ANUAL_230 V ac 50/60 Hz	4 changeover

DIGITAL TIME SWITCHES / SURFACE / PANEL / DIN



MINI LOG

- DIN rail or flush mount.
- Easy to programme guided by text menus in different languages.
- Memory backup battery lasting up to 5 years.

Code	Reference	Mounting
OB250512	MINI LOG_230 V ac 50/60 Hz	DIN rail or flush



MINI T LOG

- DIN rail, flush or recessed mount (65 x 65 mm).
- Easy to programme guided by text menus.
- Faston 6.3 x 0.8 mm connectors for mounting on electrical cabinet door.
- Changeover contact with NO and NC output.

Code	Reference	Mounting
OB251512	MINI T LOG_230 V ac 50/60 Hz	DIN rail, recessed, flush
OB251549	MINI T LOG_120 V ac 50/60 Hz	DIN rail, recessed, flush



DIGITAL TIME SWITCHES / INDUSTRIAL



MODUL LOG

- Flush mount with fastening screws.
- Easy to programme guided by text menus in different languages.
- Memory backup battery lasting up to 5 years.

Code	Reference	Mounting
OB176012	MODUL LOG _230 V ac 50/60 Hz	Flush mount with screw

DIGITAL TIME SWITCHES / PLUG-IN



TEMPO +

- Plug-in connection to Schuko plug with ground connection (4.8 mm²).
- Up to 32 programmes by seconds, days or weeks.
- Fitted with child protection.

Code	Reference	Mounting
OB162532	TEMPO +_230 V ac 50/60 Hz	Plug-in



STAIRCASE TIMERS / MODULAR



T - 16G

- Front timing selector.
- Manual control with two settings: automatic operation or on which cancels the timing during repair and maintenance operations or when the building is being cleaned.
- Valid for 3 or 4-wire installations..

Code	Reference	Timing
OB060100	T-16 G_230 V ac 50/60 Hz	From 3 min to 30 min



T - 22

- Valid for 3 or 4-wire installations.
- Protective window to prevent dust and dirt from entering.
- Manual control switch with two settings: automatic and permanent on.

Code	Reference	Timing
OB063031	T-22_230 V ac 50/60 Hz	From 45 seg. to 7 min
OB063041	T-22_120 V ac 50/60 Hz	From 45 seg. to 7 min



STAIRCASE TIMERS / SURFACE



T-11 20A

- Flush mount.
- Manual control with three settings: automatic, on and off permanent.
- Incandescence of up to 4000 W and breaking capacity of 300 W in 20 A LED lamps.

Code	Reference	Timing
OB080232	T-11_230 V ac 50 Hz	From 1 min to 3 min
OB080242	T-11_120 V ac	From 1 min to 3 min

TIMERS AND REGULATORS FOR JUNCTION / INSTALLATION BOX



PULSALUZ

- For mounting in electrical box of 65 x 65 mm.
- Requires only the lamp phase and return. Replaces existing switch without the need for wiring.
- Admits additional push buttons.
- Valid for incandescent and halogen lamps up to 500 W.

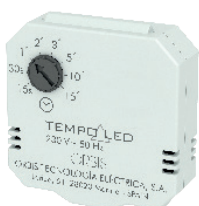
Code	Reference	Timing
OB200000	PULSALUZ_230 V ac 50 Hz	From 30 sec. to 10 min



PULSAMAT

- Controls all types of loads, including fluorescent, LED, small fan motors, etc.
- Timing from 30 s to 10 min
- Protection with fast blow fuse of 3.15 A.
- Up to 1200 W in fluorescent and 90 W in LED lamps.

Code	Reference	Mounting
OB200001	PULSAMAT_230 V ac 50 Hz	Square box of 65 x 65 mm.
OB200005	PULSAMAT 503_230 V ac 50 Hz	Rectangular box of 3 modules or 503.



TEMPO LED

- Timer for concealed mounting in electrical installation box.
- 2-wire installation, without neutral and parallel to push button. Admits ventilation motors.
- Valid for LED lamps up to 100 W and halogen or incandescent lamps up to 150 W.

Code	Reference	Function
OB200007	TEMPO LED_230 V ac 50 Hz	Timing from 15 s to 15 m



TEMPO LED 2N

- Once the timing operation has ended, it reduces the lighting to 25% to ensure users are not left in the dark.
- Valid for dimmable lamps. LED lamps up to 100 W.
- Reduced energy consumption and increase in the useful life of the lamps.

Code	Reference	Function
OB200008	TEMPO LED 2N_230 V ac 50 Hz	Timer function + dimmer





DIM LED

- Dims light from 10% to 100% for concealed mounting in electrical installation box.
- Off and on with short pressing of the push switch or dimming by loading.
- Fast installation and requires no work or neutral connection.
- Valid for LED lamps up to 100 W and halogen or incandescent lamps up to 150 W.

Code	Reference	Function
OB200009	DIM LED 230 V ac 50 Hz	Dimmer



CONTROL LED

- Selectable fixed reduction of between 10% and 100%.
- Dimmer for creating moods in restaurants, museums, gardens, etc.
- Can be switched on or off at a fixed reduced intensity level from a manual switch.

Code	Reference	Function
OB200010	CONTROL LED_230 V ac 50 Hz	Fixed lever dimmer



MICROTEMP

- Permits concealed installation behind the push button.
- Compatible with any push button available in the market.
- Valid for incandescent and halogen lamps up to 400 W.

Code	Reference	Function
OB200004	MICROTEMP_230 V ac 50 Hz	Timing from 30 s to 10 min



LUMITEMP

- Automatic staircase time switch for mounting in inspection or shunt boxes.
- 4-wire installation: lamp phase, neutral, push button and return.
- Suitable for all lamps and up to 1200 W in fluorescent lamps and extractors.

Code	Reference	Function
OB200006	LUMITEMP_230 V ac 50 Hz	Timing from 30 s to 10 min

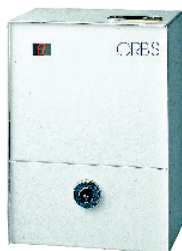
TOKEN OR COIN TIMERS



CTM

- Fixed timing: 1, 2, 3, 5, 10, 15, 30, 60, 90 or 120 min.
- Resettable advance warning of 1 to 10 minutes.
- This model may be supplied with no protection box for installation in car wash tunnels, children's gaming machines, etc.

Code	Reference	Characteristics
OB120330	CTM MECÁNICO_230 V ac 50 Hz	With no casing, standard timing
OB120530	CTM MECÁNICO_230 V ac 50 Hz	With casing, standard timing
OB120590	CTM MECÁNICO_230 V ac 50 Hz	With casing, special timing



CTM ELECTRÓNICO BÁSICO

- Programmable timing from 1 min to 150 h and coin or token operation.
- Timing operation end warning by flashing display 1 minute before the end.
- After starting the main timing operation with a second token, it adds a new timing operation.

Code	Reference	Characteristics
OB120130	CTM ELECTRÓNICO BÁSICO_230 V ac 50 Hz	Token operation with two slots
OB120131	CTM ELECTRÓNICO BÁSICO_230 V ac 50 Hz	1 € coin operation
OB120132	CTM ELECTRÓNICO BÁSICO_230 V ac 50 Hz	Coin operation
OB120133	CTM ELECTRÓNICO BÁSICO_230 V ac 50 Hz	2 € coin operation
OB120134	CTM ELECTRÓNICO BÁSICO_230 V ac 50 Hz	0,5 € coin operation
OB120197	CTM ELECTRÓNICO BÁSICO_24 V ac	Coin operation
OB120198	CTM ELECTRÓNICO BÁSICO_24 V ac	2 € coin operation



CTM ELECTRÓNICO

- Programmable timing from 1 min to 150 h
- Relay that activates an acoustic or luminous signal to warn the user of the end of the timing operation, thus given them time to enter more coins and increase the time before the lighting, shower, TV, computer, etc. are shut off.
- Connection terminals for external pause switch. In showers on camp sites a pause switch is normally installed to give the user time to apply the soap

Code	Reference	Characteristics
OB120030	CTM ELECTRÓNICO_230 V ac 45-60 Hz	Token operation with two slots
OB120031	CTM ELECTRÓNICO_230 V ac 45-60 Hz	1 € coin operation
OB120032	CTM ELECTRÓNICO_230 V ac 45-60 Hz	
OB120062	CTM ELECTRÓNICO_24 V ac /dc	
OB120072	CTM ELECTRÓNICO_12 V ac /dc	

HOOR METERS



CONTA MODULAR

- DIN rail mount, two modules wide.
- Electromechanical meter.
- Display with 5 digits and 2 decimal places.

Code	Reference	Power supply
OB180802	CONTA MODULAR_230 V ac 50 Hz	230 V ac 50 Hz



CONTA EMPOTRABLE

- Recessed mounting behind panel of 45x45 mm.
- Electromechanical meter.
- Display with 5 digits and 2 decimal places
- Available for different supply voltages, in alternating and direct current.

Code	Reference	Power supply
OB180801	CONTA EMP_12-80 V dc	12 - 80 V dc
OB180824	CONTA EMP_24 V ac 50 Hz	24 V ac 50 Hz
OB180848	CONTA EMP_48 V ac 50 Hz	48 V ac 50 Hz
OB1808110	CONTA EMP_110 V ac 50 Hz	110 V ac 50 Hz
OB180800	CONTA EMP_230 V ac 50 Hz	230 V ac 50 Hz
OB1808400	CONTA EMP_400 V ac 50 Hz	400 V ac 50 Hz

LIQUID LEVEL RELAYS



EBR-1

- Enables the filling or emptying of a deposit (well, or tank).
- Reinforced protection against storms disruptions by means of varistors at the supply input and in the probes.
- LED relay status indicator lamp.

Code	Reference	Probes
OB230130	EBR-1 MODULAR_230 V ac 50/60 Hz	1 EBR probes kit



EBR-2

- Enables control in filling tanks or deposit from a well.
- Reinforced protection against storm disruptions by means of varistors at the supply input and in the probes.
- Adjustable probe sensitivity.

Code	Reference	Probes
OB230230	EBR-2 MODULAR_230/400 V ac 50/60 Hz	2 EBR probes kit



EBR PROBES KIT

- Electrode made of stainless steel, protected by a nylon coating to prevent accidental contact in metal tanks.
- Alternating current between probes to eliminate scaling due to electrolysis.
- The probes are placed at the desired depth levels. An insulated cable of at least 1.5 mm² must be used, with a distance of 100 metres between the probe and the equipment. For longer distances, it is advisable to use a shielded cable and connect the mesh to mass.

Code	Reference	Probes
OB230300	EBR KIT 3 PROBES	3 units



MOTION / PRESENCE DETECTORS



MOTION DETECTORS

SURFACE CEILING	20
FLUSH CEILING	20
ON WALL	21
ON WALL OR CEILING	21
CONCEALED	22
INSTALLATION BOX	22

PRESENCE DETECTORS

SURFACE CEILING	22
FLUSH CEILING	23
CONCEALED	24
ACCESSORY - REMOTE CONTROL	24

CEILING LAMPS WITH DETECTOR

BUILT-IN LED	24
WITH LAMPHOLDER	25

LED LUMINAIRES WITH DETECTOR	25
-------------------------------------	-----------

MOTION DETECTORS / SURFACE CEILING



CIRCUMAT +

- With a small, discreet design, ideal for hotels and offices.
- With temperature compensation.
- Up to 500 VA in LED lamps and 1200 W in incandescent lamps.

Code	Reference	Applications
OB137112	CIRCUMAT +_ 230 V ac 50 Hz	Halls, corridors, bathrooms.
OB137100	CIRCUMAT +_120 / 230 V ac 50/60 Hz	Halls, corridors, bathrooms.



MOVICAM CR

- With a surveillance camera appearance, perfect for building portals, halls and corridors.
- LED status lamp: waiting for motion, detecting motion or lighting conditions above the selected level.
- Adjustable parameters: detection area, timer function and light sensitivity.

Code	Reference	Applications
OB135912	MOVICAM CR_230 V ac 50/60 Hz	Halls, garages, corridors, landings, lifts.

MOTION DETECTORS / FLUSH CEILING



DICROMAT +

- With external temperature compensation for more precise detection.
- With a discreet design and basic functionalities appropriate for most installations.
- Up to 500 VA in LED lamps and 1200 W in incandescent lamps.

Code	Reference	Applications
OB136112	DICROMAT +_ 230 V ac 50 Hz	Bathrooms, halls, corridors.
OB136100	DICROMAT +_120 / 230 V ac 50 / 60 Hz	Bathrooms, halls, corridors.



DICROMAT MICRO

- The small size of the sensor (16 mm) and its detection area make it ideal for small areas such as building entrances, lifts, cabins in bathrooms, etc.
- LED status lamp that lights up when the equipment detects motion.

Code	Reference	Applications
OB133612	DICROMAT MICRO_230 V ac 50 Hz	Bathrooms, halls, corridors.

DICROMAT MINI / DICROMAT 2 MINI

- Ceiling recessed mount with hole of 55 mm.
- DICROMAT MINI 2 has two outputs with independent timer functions. Ideal for timing two circuits with a sensor, for instance, lighting and ventilation in bathrooms, lighting and music streaming in waiting rooms, lighting and security camera in offices, homes, etc.



Code	Reference	Outputs	Applications
OB133512	DICROMAT MINI_230 V ac 50 Hz	1	Halls, bathrooms.
OB133912	DICROMAT MINI 2_230 V ac 50 Hz	2	Halls, bathrooms.

MOTION DETECTORS / ON WALL



ISIMAT

- IP55 dust and water jet protection, based on EN 60529.
- Sensor head rotation to aim it at the detection area, 180° horizontal rotation, 45° vertical rotation.

Code	Reference	Detection angle	Applications
OB134312	ISIMAT_140° 230 V ac 50 Hz	140°	Archways, corridors.
OB134342	ISIMAT_140° 120 V ac 60 Hz	140°	Archways, corridors.
OB134112	ISIMAT+_200° 230 V ac 50 Hz	200°	Archways, corridors.



PROXIMAT

- Motion sensor for wall inner or outer corner mount.
- Large detection capacity, 240° angle with 180° horizontal rotation.
- Zero-crossing relay for better switching of LED type, fluorescent or low consumption loads.

Code	Reference	Applications
OB132312	PROXIMAT_230 V ac 50 Hz	Archways, landings, corridors.



MOTION DETECTORS / ON WALL OR CEILING



MULTIMAT

- Motion sensor for flush mounting on ceiling, wall inner or outer corners.
- IP55 dust and water jet protection, based on EN 60529.
- Adjustable parameters: timer function and light sensitivity.

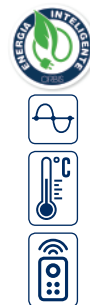
Code	Reference	Applications
OB134212	MULTIMAT_230 V ac 50 Hz	Archways, landings, corridors .



PROXIMAT PRO CR

- Motion sensor for flush mounting on ceiling, wall inner or outer corners.
- Large detection capacity: height of 7 m and diameter of 10 m height of 3.5 m and diameter of 30 m.
- Optionally, can be programmed by MANDO CR, which allows the parameters and functions to be changed without the need for tools or ladders. Speeds up and simplifies installation and maintenance.
- Zero-crossing relay for better switching of LED type, fluorescent or low consumption loads.

Code	Reference	Applications
OB134812	PROXIMAT PRO CR_230 V ac 50 Hz	Warehouses, garages, classrooms, meeting rooms and large surface areas in general.



MOTION DETECTORS / CONCEALED



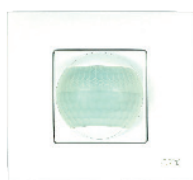
ECOMAT MINI

- High frequency detection, greater sensitivity to the slightest movement and concealed mount option.
- Because of its small size and when passing through non-metallic surfaces it can be concealed in a dropped ceiling or inside a lamp, electrical or junction box.
- It detects without being seen, which makes it perfect from the standpoint of appearance and security.
- Its detection capacity does not depend on room temperature and it maintains its precision in warm or damp environments such as kitchens or showers.

Code	Reference	Applications
OB135012	ECOMAT MINI_230 V ac 50/60 Hz	Archways, storeroom corridors, offices, meeting rooms, bathrooms, halls.



MOTION DETECTORS / INSTALLATION BOX



ORBIMAT

- Motion detector for mounting in electrical box of 65x65 mm
- The manual switch can be mounted in just a few minutes without the need to execute any installation work.
- It permits additional push buttons and therefore can be used as a staircase time switch.
- Concealed manual control with three settings: automatic, on and permanent off.

Code	Reference	Applications
OB132612	ORBIMAT_230 V ac 50/60 Hz	Corridors, bathrooms, bedrooms.



MINIMAT

- For mounting in a rectangular 3 module (503) or 4 x 2 inch electrical box.
- Zero step relay for better switching of LED loads up to 200 VA.
- Adapter frames compatible with the following series:
-BTICINO* (Living international, Axolute, Light and Matix) / VIMAR* (Idea, Rondo, Plana and Eikon) / LEGRAND* (Vela and Cross) / GEWISS* (Chorus Lux and Art) (*Brands not manufactured by ORBIS.)

Code	Reference	Applications
OB135312	MINIMAT_230 V ac 50 Hz	Bathrooms, bedrooms, halls.



PRESENCE DETECTORS / SURFACE CEILING



CIRCUMAT PRO CR

- It has an especially large detection capacity: height of 7 m and diameter of 10 m height of 3.5 m and diameter of 30 m.
- Large detection capacity and fitted with a continuous ambient lighting measuring device.
- Zero-crossing relay for LED loads up to 500 VA, fluorescent loads up to 1200 VA or low consumption loads up to 900 VA.

Code	Reference	Applications
OB134912	CIRCUMAT PRO CR_230 V ac 50 Hz	Classrooms, changing rooms, industrial buildings, meeting rooms, warehouses.





CIRCUMAT PRO CR 12M

- Specially designs for spaces with high ceilings such as industrial buildings and warehouses.
- Admits a mounting height of up to 12 metres with a diameter of 17 metres.
- Optionally, it can be programmed by MANDO CR.



Code	Reference	Applications
OB134920	CIRCUMAT PRO CR 12M_ 230 V ac 50/60 Hz	Industrial buildings, warehouses, loading docks, archways.



CIRCUMAT PRO 1 - 10V

- Presence sensor with a 1...10 V analogue output for adjustable light control.
- Large detection height of 5 metres with a diameter of 20 metres.
- It can function only as a photocell, with an analogue output for continuous regulation, depending on the natural light conditions.



Code	Reference	Applications
OB134910	CIRCUMAT PRO CR 1 -10V_ 230 V ac 50/60 Hz	Industrial buildings, warehouses, loading docks, archways.



CIRCUMAT PRO DALI

- Presence sensor fitted with DALI (Digital Addressable Lighting Interface) two-way communication.
- The DALI communication standard with a single 2-wire line that permits Independent control of a lighting installation, in groups of 16 or in broadcast mode.
- Fixed or stand by light mode.



Code	Reference	Applications
OB134930	CIRCUMAT PRO DALI_ 230 V ac 50 Hz	Offices, shopping centres, garages, halls.

PRESENCE DETECTORS / FLUSH CEILING



DICROMAT +CR / DICROMAT 2 +CR

- The ideal model for premises with long corridors as it permits the installation of additional sensors: DICROMAT SENSOR +.
- Zero-crossing relay for better switching of LED type, fluorescent or low consumption loads. Input for additional push buttons so that it can be used as a staircase time switch.



Code	Reference	Output	Applications
OB134512	DICROMAT + CR_ 230 V ac 50 Hz	1	Archways, storerooms, landings, corridors.
OB134612	DICROMAT 2+ CR_ 230 V ac 50 Hz	2	Archways, storerooms, landings, corridors.



DICROMAT SENSOR +

- Additional sensor compatible with DICROMAT +CR and DICROMAT 2 +CR.
- Speeds up, simplifies and economises mounting, as it is not necessary to buy or wire all the sensors at the area to be covered.
- Adjustable detection area.

Code	Reference
OB133412	DICROMAT SENSOR +

PRESENCE DETECTORS / CONCEALED



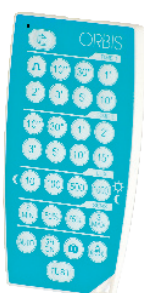
ECOMAT MINI 2N

- High frequency sensor suitable for dimmable lamps.
- After the time lag, it reduces the lighting to 20% of its maximum value, and it remains in this state until a new detection or the lighting will go off when the natural light conditions allow. This function prevents the user from being left with no light in dark areas, such as storerooms, garages, hotel corridors and so on.

Code	Reference	Applications
OB135012	ECOMAT MINI 2N_230 V ac 50/60 Hz	Archways, corridors, storerooms, offices meeting rooms, bathrooms, halls.



MOTION / PRESENCE DETECTORS REMOTE CONTROL



MANDO A DISTANCIA CR

- Remote control for adjusting parameters in compatible RC (CR) models: PROXIMAT PRO CR, CIRCUMAT PRO CR, CIRCUMAT PRO CR 12M, DICROMAT +CR/2 +CR and MOVICAM CR.
- With a single REMOTE CONTROL the user can control all the installation SENSORS.
- Permanent on: very useful for performing maintenance, cleaning and other tasks.

Code	Reference	Functions
OB134712	MANDO CR	Regulation: time, distance and light sensitivity. Mode: permanent, alarm and holiday.

CEILING LAMPS WITH DETECTOR / BUILT-IN LED



PLADILED METAL PIR

- Ideal for reducing consumption in apartment blocks or offices.
- Motion detection with PIR technology, detection diameter up to 6 metres.
- Luminous flux: 1100 lm, LED colour: 4000 K.

Code	Reference	Applications
OB136612	PLADILED METAL PIR_120-230 V ac 50/60 Hz	Corridors, portals, staircase landings.



PLADILED 80 2N

- LED ceiling lamp with double lighting level. 100% luminosity: 1200 lm 30% luminosity: 360 lm
- After the adjusted time the lighting will remain at 30% of its maximum value.
- High frequency technology, greater sensitivity to the slightest movement. Detection diameter up to 16 metres.
- LED colour temperature: 4000 K.
- High IP66 protection rating.

Code	Reference	Applications
OB136712	PLADILED 80 2N WHITE_230 V ac 50/60 Hz	Corridors, portals, staircase landings.
OB136712N	PLADILED 80 2N GRAPHITE_230 V ac 50/60 Hz	Corridors, portals, staircase landings.



PLADILED 80 E

- LED ceiling light with double lighting level and emergency battery of approximately 2 hours.
- High frequency technology, greater sensitivity to the slightest movement.
- Detection diameter up to 16 metres. IP66.
- LED lamp luminosity: 1200 lm / 2N: 360 lm / E: 180 lm Colour temperature: 4000 K.
- High IP66 protection rating.

Code	Reference	Applications
OB136812	PLADILED 80 E_230 V ac 50/60 Hz	Corridors, portals, staircase landings.



CEILING LAMPS WITH DETECTOR / WITH LAMPHOLDERS



PLADI-E27

- Motion sensor plus lamp for E-27 sleeve.
- High frequency technology, greater sensitivity to the slightest movement.
- Sensor diameter: up to 18 m at a height of 2.5 m.



Code	Reference	Applications
OB136527	PLADI-E27_230 V ac 50Hz.	Archways, portals, landings, corridors, bathrooms, changing rooms.

LED LUMINAIRES WITH DETECTOR



DECOLED 72

- Integrated motion sensor solution plus LED lamp for indoor or outdoor use.
- For wall flush mounting.
- Recommended for indoor or outdoor covered zones such as terraces or porches.
- Three operating modes: just motion sensor, just twilight sensor or twilight with timed 2, 4, 6 or 8 hours.
- Luminous flux: 477 real lm real value with diffuser. Colour temperature: 5700-6300K.

Code	Reference	Applications
OB135712	DECOLED 72_230 V ac 50 Hz	Archways, portals, corridors, storeroom corridors, covered outdoor lighting.



PROXILED 8 / PROXILED 15

- High power LED type projector with motion sensor for outdoor use (IP55).
- Recommended for large outdoor areas such as entrance doors, garage entrances or security lighting.
- Projector made of cast aluminium for increased robustness and dissipation of the heat generated by the LED lamps.
- Colour temperature: 5000-6300K.

Code	Reference	Features
OB135450	PROXILED 8_230 V ac 50 Hz, 20 W	1.234 lm real value
OB135450N	PROXILED 8 BLACK_230 V ac 50 Hz, 20 W	1.234 lm real value
OB135475	PROXILED 15 WHITE_230 V ac 50 Hz, 34 W	2.128 lm real value



SPOTMAT LED

- Small motion sensor for homes with built-in LED.
- Battery-operated and thus requires no cables or installation.
- Ideal for mounting in cabinets, kitchen worktops, supplementary lighting at night in bedrooms, staircases, corridors, etc.



Code	Reference	Applications
OB135512	SPOTMAT LED	Inside cabinets, courtesy light in corridors of homes, kitchen worktops, bedroom night light.





CLIMATE CONTROL AND HOME AUTOMATION



THERMOSTATS	
ANALOGUE	27
DIGITAL	27
TOUCHSCREEN	28
CHRONOTHERMOSTATS	
ANALOGUE	28
DIGITAL	28
TOUCHSCREEN	31
ACCESSORIES	32
PHONE CONTROLLERS	33
CONTROL DEVICES FOR INSTALLATION / JUNCTION BOX	33
LED COURTESY / EMERGENCY LIGHTS	35
USB SOCKETS	36
DOOR BELLS	36
GAS DETECTORS	36



ANALOGUE THERMOSTATS



CLIMA

- Gas membrane operation, making it reliable and with long-lasting precision.
- Requires no electrical power.
- Permits the blocking of temperature to prevent tampering.



Code	Reference	Manual control
OB320422	CLIMA ML	Without
OB320522	CLIMA MLI	ON/OFF
OB320622	CLIMA MLW	ON/OFF +heating/air
OB321232	CLIMA FANCOIL	Heating/air + 2 speeds

DIGITAL THERMOSTATS



NEO ML+

- Compatible with floor systems (water or electric) with the X TEMP 10K sensor.
- Admits external temperature sensor control.
- Anti-ice temperature, comfort and savings.

Code	Reference
OB324400	NEO ML + WHITE
OB324410	NEO ML + ANTRACITE
OB324420	NEO ML + ALUMINIUM



DECO TERMO

- Blue backlit LCD with brightness control (high or low).
- Manual selection of comfort, savings or anti-ice temperature.

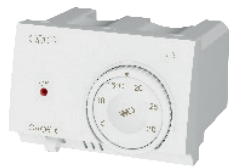
The DECO TERMO_Italian standard (503) model includes adapter frames compatible with the following series:

BTICINO* (Living international, Livinglight, Livinglight Air, Livinglight Tech, Axolute, Axolute Air and Matix), VIMAR* (Idea, Rondo, Plana, Eikon and Arké), LEGRAND* (Vela and Cross), GEWISS* (Chorus Lux, Art and One). (*Brands not manufactured by ORBIS.)

- DECO TERMO_Italian standard includes front frames in white and coal grey.

Code	Reference
OB350410	DECO TERMO_Installation box 65 x 65 mm.
OB350420	DECO TERMO_Italian standard (503)

230 V AC



TEK / TEK SW

- TEK has a manual switch: ON, OFF and night mode.
- TEK SW has a manual switch: heating, air conditioning and night mode. With adapter frames compatible with the following series:

-BTICINO* (Living international, Axolute, Light and Matix) / VIMAR* (Idea, Rondo, Plana and Eikon) / LEGRAND* (Vela and Cross) / GEWISS* (Chorus Lux and Art) (*Brands not manufactured by ORBIS.)

Code	Reference	Manual control
OB322600	TEK WHITE	ON/OFF/NIGHT
OB322610	TEK ANTRACITE	ON/OFF/NIGHT
OB322620	TEK ALUMINIUM	ON/OFF/NIGHT
OB322700	TEK SW WHITE	HEATING/AIR CONDITIONING/NIGHT
OB322710	TEK SW ANTRACITE	HEATING/AIR CONDITIONING/NIGHT
OB322720	TEK SW ALUMINIUM	HEATING/AIR CONDITIONING/NIGHT





TOUCHSCREEN THERMOSTATS



THALOS

- Large, easy to read, backlit display.
- No programming required, just select the desired temperature.
- Screen lock with password to prevent unauthorised tampering.



Code	Reference
OB325400	THALOS



VELUS TOUCH

- Large backlit touch screen.
- Configurable summer/winter and day/night temperatures.
- Screen lock to prevent unauthorised tampering



Code	Reference
OB326000	VELUS TOUCH WHITE
OB326010	VELUS TOUCH ANTRACITE

ANALOGUE CHRONOTHERMOSTATS



LYRA

- Analogue chronothermostat, easy to programme by displacement of pins.
- A single daily repetition programme with two temperatures, day and night.
- Manual control with 3 settings: off, day or night temperature.



Code	Reference
OB325000	LYRA WHITE

DIGITAL CHRONOTHERMOSTATS



MIRUS

- Easy to programme with rotary selector with the days of the week.
- Can operate as a thermostat by temporarily or permanently cancelling the programming.
- Low battery level indicator.



Code	Reference
OB324700	MIRUS WHITE
OB324710	MIRUS ANTRACITE



ORUS

- 7 programmes with 3 temperatures plus anti-ice to prevent freezing of pipes.
- Viewing of internal and external temperature with X TEMP 100K.
- Input for GSM CODITEL 2 telephone controller that makes it possible to activate or deactivate remote programming.



Code	Reference
OB324500	ORUS WHITE
OB324510	ORUS ANTRACITE



ORUS RF

- With built-in radio frequency wireless communication with RX1 8A receiver connected to the heating or air conditioning equipment.
- Connect ORUS RF to the boiler or air conditioning system without the need for cables or installation work.
- Recording of maximum and minimum daily temperature.
- Automatic, resettable summer/winter time change.



Code	Reference
OB324900	ORUS RF



ORUS GSM

- GSM communication with SIM card for detached or mountain homes and programming via App for smartphone.
- With an auxiliary input for connecting an X TEMP 100K external temperature sensor.
- It is possible to connect a potential free contact and receive SMS alarms for triggering of line protection, opening of doors and windows, etc.
- SMS alarm due to mains power failure.



230 V AC

Code	Reference
OB324800	ORUS GSM

ORUS GSM APP

- Easy to edit programmes.
- Consultation of internal and external temperature.
- Editing of alarms.



Consultation of internal and external temperature in the home.



Receive and consult temperature alarms, absence of power and auxiliary input.



Add up to 5 alarm reception numbers.





BIKO APP

- Chronothermostat with Bluetooth communication and programming through App developed for smartphone or tablet.
- Programming of up to 6 daily scenarios with independent temperatures for the 7 days of the week.
- With adapter frames compatible with the following series:
 - BTICINO* (Living international, Axolute, Light and Matix) / VIMAR* (Idea, Rondo, Plana, Eikon and Arké). LEGRAND* (Vela and Cross) / GEWISS* (Chorus Lux and Art) / AVE* (System 44) / MASTER* (*Brands not manufactured by ORBIS.)

Code	Reference
OB325800	BIKO APP WHITE
OB325810	BIKO APP ANTRACITE
OB325820	BIKO APP ALUMINIUM

APP BIKO APP

- Intuitive scenario-based day and temperature programming (on waking up, leaving the house, going to bed, etc.)



Select scenarios



Time and temp. programming for each scenario



Configure: changes, anti-ice, thermostat mode, etc.





ATHENA

- Permits independent temperature control in up to 4 rooms via the ATHENA TEMP sensors.
- X TEMP 100K allows the viewing of internal and external temperature.
- Input for GSM CODITEL 2 telephone controller that makes it possible to activate or deactivate remote programming.

Code	Reference
OB324200	ATHENA WHITE
OB324220	ATHENA ALUMINIUM

230 V AC



DECO CRONO

- Blue backlit LCD with clear visibility.
 - In the event of a power cut, DECO CRONO memorises the programming.
 - The DECO CRONO_Italian standard (503) model includes adapter frames compatible with the following series:
 - BTICINO* (Living international, Livinglight, Livinglight Air, Livinglight Tech, Axolute, Axolute Air and Matix), VIMAR* (Idea, Rondo, Plana, Eikon and Arké), LEGRAND* (Vela and Cross), GEWISS* (Chorus Lux, Art and One).
- (*Brands not manufactured by ORBIS.)

Code	Reference
OB350210	DECO CRONO_230 V ac 50 Hz Installation box 65x65 mm.
OB350220	DECO CRONO_230 V ac 50 Hz Italian standard (503)



KRON PLUS

- Screen lock with password to prevent unauthorised tampering.
- 10 min memory to replace batteries.
- With adapter frames compatible with the following series:
 - BTICINO* (Living international, Axolute, Light and Matix) / VIMAR* (Idea, Rondo, Plana and Eikon) / LEGRAND* (Vela and Cross) / GEWISS* (Chorus Lux and Art) (*Brands not manufactured by ORBIS.)

Code	Reference
OB322500N	KRON PLUS WHITE
OB322510N	KRON PLUS ANTRACITE
OB322520N	KRON PLUS ALUMINIUM

TOUCHSCREEN CHRONOTHERMOSTATS



CHRONOS

- Easier, more intuitive programming.
- Three adjustable temperature levels + anti-ice.
- Input for CODITEL 2 telephone controller to permit the installation to be switched on remotely.

Code	Reference
OB325600	CHRONOS WHITE



MIRUS TOUCH

- Large white backlit touch screen with brightness adjustment.
- 7 easy to configure programmes.
- Screen lock to prevent unauthorised tampering.

Code	Reference
OB325300	MIRUS TOUCH WHITE
OB325310	MIRUS TOUCH ANTRACITE





ACCESSORIES



ATHENA TEMP

- Sensor for temperature control by zones.
- Allows for the establishing of ± 3 °C with respect to the temperature set in ATHENA.
- 2-wire RS485 serial connection.

Code	Reference	Compatible with
OB329903	ATHENA.TEMP	ATHENA



TX ATHENA

- Radio frequency emitter which, when connected to the ATHENA model, permits wireless communication with the boiler or air conditioning equipment.
- Compatible with RX1 8A and RX4 8A receivers.

Code	Reference	Compatible with
OB329902	TX ATHENA	ATHENA



RX1 8A

- TX ATHENA radio frequency receiver to control heating or air conditioning.
- Fitted with 8 A signal relay.
- LED lamp indicating operating status and output.

Code	Reference	Compatible with
OB329904	RX1 8A	ORUS RF and TX ATHENA



RX4 8A

- Radio frequency receiver for controlling up to 4 heating or air conditioning circuits.
- Wireless connection with ATHENA.
- Optional cabling through RS485 port.
- Fitted with 1 simple relay and 3 8 A changeover relays.

Code	Reference	Compatible with
OB329905	RX4 8A	TX ATHENA



RX ANT

- Antenna accessory to increase the range of RX1 8A or RX4 8A.
- Fastened with screws.

Code	Reference	Compatible with
OB329906	RX ANT	ORUS RF and TX ATHENA



XTEMP

- XTEMP 10k: Sensor compatible with NEO ML+ for external temperature or radiant floor.
- XTEMP 100K: External temperature sensor compatible with CHRONOS, ORUS, ORUS RF, ORUS GSM and ATHENA.

Code	Reference	Sensor Type
OB320055	X TEMP 10K	NTC (10k Ω a 25 °C)
OB329907	X TEMP 100K	NTC (100k Ω a 25 °C)



PHONE CONTROLLERS



CODITEL 2

- Digital relay switch outputs, 1 analogue input and 2 digital outputs.
- Immediate recognition of alarms and remote management of isolated or unguarded facilities.
- The alarms are in the form of text messages or telephone calls.
- Possibility of programming inputs and outputs depending on each situation or event.
- Programmed sending of information messages on the status of the facility.

Code	Reference	Inputs / outputs
OB322820	CODITEL 2_230 V ac 50 Hz	1 analogue, 2 digital / 2 changeover



GSM ANTENA

- Accessory antenna to increase the CODITEL 2 signal range.
- Cable length 3 m.

Code	Reference
OB329913	CODITEL ANTENA



MA 16

- When used with CODITEL 2, permits an increase in cut-off capacity of up to 16 A.
- Fitted with 1 simple N/C relay.
- LED power supply and relay status indicator lamp.

Code	Reference	Outputs
OB329912	MA 16	1 N/C

CONTROL DEVICES FOR INSTALLATION / JUNCTION BOX



PULSALUZ

- Mounting in electrical box of 65 x 65 mm.
- Requires only the phase and return. Replaces existing switch without the need for wiring.
- Admits additional push buttons.
- Valid for incandescent and halogen lamps up to 500 W..

Code	Reference	Timing
OB200000	PULSALUZ_230 V ac 50 Hz	From 30 sec. to 10 min



PULSAMAT

- Controls all types of loads, including fluorescent, LED, small fan motors, etc.
- Timing from 30 s to 10 min
- Protection with fast blow fuse of 3.15 A.
- Up to 1200 VA in fluorescent and 90 VA in LED lamps.

Code	Reference	Mounting
OB200001	PULSAMAT_230 V ac 50 Hz	Box of 65 x 65 mm.
OB200005	PULSAMAT 503_230 V ac 50 Hz	Box of 3 modules or 503





TEMPO LED

- Timer for concealed mounting in electrical installation box.
- 2-wire installation, without neutral and parallel to push button. Admits ventilation motors.
- Valid for LED lamps up to 100 W and halogen or incandescent lamps up to 150 W.

Code	Reference	Function
OB200007	TEMPO LED_230 V ac 50 Hz	Timing from 15 s to 15 min



TEMPO LED 2N

- Once the timing operation has ended, it reduces the lighting to 25% to ensure users are not left in the dark.
- Valid for dimmable. LED lamps up to 100 VA.
- Reduced energy consumption and increase in the useful life of the lamps.

Code	Reference	Function
OB200008	TEMPO LED 2N_230 V ac 50 Hz	Timer function + dimmer



DIM LED

- Dims light from 10% to 100% for concealed mounting in electrical installation box.
- Off and on with short pulse duration or long pulse duration for regulation.
- Fast installation and requires no work or neutral connection.
- Valid for LED lamps up to 100 VA and halogen or incandescent lamps up to 150 VA.

Code	Reference	Function
OB200009	DIM LED 230 V ac 50 Hz	Dimmer



CONTROL LED

- Selectable fixed reduction of between 10% and 100%.
- Dimmer for creating moods in restaurants, museums, gardens, etc...
- Can be switched on or off at a fixed reduced intensity level from a manual switch.

Code	Reference	Function
OB200010	CONTROL LED_230 V ac 50 Hz	Fixed level dimmer



MICROTEMP

- Permits concealed installation between the push button and the electrical box, in a shunt or junction box, etc.
- Compatible with any push button available in the market.
- Valid for incandescent and halogen lamps up to 400 VA.

Code	Reference	Function
OB200004	MICROTEMP_230 V ac 50 Hz	Timing from 30 s - 10 min

LUMITEMP

- Automatic staircase time switch for mounting in junction or shunt boxes.
- 4-wire installation: phase, neutral, push button and lamp return.
- Suitable for all lamps and up to 1200 VA in fluorescent lamps and extractors.

Code	Reference	Function
OB200006	LUMITEMP_230 V ac 50 Hz	Timing from 30 s - 10 min



LED COURTESY / EMERGENCY LIGHTS



MINISELF

- Supplementary emergency lamp for mounting in electrical box of 65 x 65 mm.
- Has a rechargeable battery with a life of up to 2 hours.
- Fitted with two 1.125 W LED lamps that provide up to 20 lumen.
- Compatible with the Simon 27 series (brand not manufactured by ORBIS).



Code	Reference	Applications
OB136312E	MINISELF_230 V ac 50 Hz	Staircases, corridors, offices, rooms.

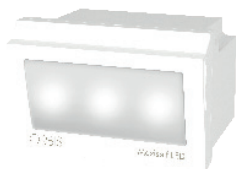


MINISELF LED

- Supplementary emergency light for mounting in an Italian type 3 module (503) or 4 x 2 inch electrical box.
- Has a rechargeable battery with a life of up to 2 hours.
- Fitted with two 1.125 W LED lamps that provide up to 20 lumen.
- With adapter frames compatible with the following series:
- BTICINO* (Living, LivingLight, LivingLight Tech, LivingLight Air, Axolute, Matix) / VIMAR* (Plana, Eikon, Arké) / GEWISS* (Chorus) / AVE* (System 44). (*Brands not manufactured by ORBIS).



Code	Reference	Applications
OB136312	MINISELF LED_230 V ac 50 Hz	Staircases, corridors, offices, rooms.



MAXISELF LED

- Supplementary courtesy emergency light for mounting in an Italian type 3 module (503) or 4 x 2 inch electrical box.
- Remains on for up to 2 hours at 600 lux in the event of a power cut.
- In the presence of electrical power, the user can select the option of leaving the equipment off or on (5, 30 or 150 lux).
- Detachable for use as a flashlight.



With adapter frames compatible with the following series:
- BTICINO* (Living International, Axolute, Axolute Air, Light Tech, Matix), VIMAR* (Idea, Rondo, Plana, Eikon, Arké), LEGRAND* (Vela, Cross), GEWISS* (Chorus Art, Lux, One), AVE* (System 44), MASTER* (*Brand not manufactured by ORBIS).

Code	Reference	Applications
OB1366400	MAXISELF LED_230 V ac 50 Hz	Staircases, corridors, offices, rooms.





USB SOCKETS



MINICARG USB

- USB power supply for mounting in an Italian type 3 module (503) or 4 x 2 inch electrical box.
- Standard USB 5 V cc, 2 A output.
- With adapter frames compatible with the following series:
- BTICINO* (Living, Livinglight, Livinglight Tech, Livinglight Air, Axolute, Axolute Air, Matix), VIMAR* (Plana, Eikon, Arké), GEWISS* (Chorus), AVE* (Series 44). (*Brands not manufactured by ORBIS.).



Code	Reference	Applications
OB140602	MINICARG USB_230 V ac 50/60 Hz	Power supply for smartphone, tablet and any other electronic device in homes, offices or hotels.

DOOR BELLS



ORBISON / ORBISON DUO

- Electro mechanical bell with considerable resonance capacity and robustness.
- ORBISON DUO is designed for homes with double entry doors as it has a dong-dong and buzzer sound.

Code	Reference
OB110316CH	ORBISON_120+230 V ac 50/60 Hz
OB110330CH	ORBISON_230 V ac 50/60 Hz
OB110366CH	ORBISON_24 V ac +dc
OB110376CH	ORBISON_12 V ac +dc 50/60 Hz
OB110386CH	ORBISON_6-8 V ac +dc 50/60 Hz
OB110416CH	ORBISON DUO_230 V ac 50/60 Hz

GAS DETECTORS



TWIST METANO/GAS NATURAL/GLP

- Gas, methane, natural gas or LPG leak sensors with acoustic, luminous buzzers and supply cut-off contact.
- In the event of a leak in the installation, TWIST switches on the acoustic alarm and LED lamp and if the leak persists after 30 seconds, it switches the output relay, closing the gas supply electro-valve. TWIST remains in this state until the leak disappears and then the alarms will go off and the relay is switched.
- The electro-valve must be reset manually for safety reasons.
- Calibrated to detect up to 10% of the lower explosion limit (L.E.L.) for 4 years.
- Changeover contact for N/O and N/C electro-valve.
- The TWIST KIT contains the gas supply electro-valve for 1/2" or 3/4" pipes.

Code	Reference	Electro-valve
OB514410	TWIST GAS METHANE/TOWN GAS	X
OB515212	TWIST KIT 1/2" GAS METHANE/TOWN GAS	1/2"
OB515234	TWIST KIT 3/4"	3/4"
OB514510	TWIST GAS METHANE/TOWN GAS	X
OB515312	TWIST KIT GAS LPG 1/2"	1/2"
OB515334	TWIST KIT GAS LPG 3/4"	3/4"



ENERGY MEASUREMENT AND MANAGEMENT



MODULAR ENERGY METERS	
SINGLE-PHASE / ANALOGUE	38
SINGLE-PHASE / DIGITAL	39
THREE-PHASE / ANALOGUE	40
THREE-PHASE / DIGITAL	40
MULTIFUNCTION METERS	
SINGLE-PHASE	40
THREE-PHASE	41
DIGITAL METERS	42
NETWORK ANALYSERS	43
ENERGY MANAGERS	45
ENERGY MEASUREMENT AND MANAGEMENT ACCESSORIES	46
LOAD MANAGERS	47
BILLING ENERGY METERS	
SINGLE-PHASE	48
THREE-PHASE	48
PRIME SMART METERS	48



MODULAR ENERGY METERS / SINGLE-PHASE / ANALOGUE



CONTAX 2511 SO

- Single phase one-module analogue meter.
- 5 (25) A direct measurement.
- Opto-isolator pulse output communication.

Code	Reference	Features
OB701000	CONTAX 2511 SO_230 V ac (-20% +15%), 50/60 Hz	Single phase, 25 A



CONTAX 2521 SO MID

- Single phase two-module analogue meter.
- With MID certification based on European Directive 2014/32/EU.
- Opto-isolator pulse output communication.

Code	Reference	Features
OB702000	CONTAX 2521 SO MID_230 V ac (-20% +15%), 50 Hz	Single phase, 25 A



CONTAX 3221 SO

- Single phase two-module analogue meter.
- 5 (32) A direct measurement.
- Opto-isolator pulse output communication.

Code	Reference	Features
OB703099	CONTAX 3221 SO_230 V ac (-20% +15%), 50/60 Hz	Single phase, 32 A



CONTAX 6521 SO

- Single phase two-module analogue meter.
- 10 (65) A direct measurement.
- Opto-isolator pulse output communication.

Code	Reference	Features
OB707000	CONTAX 6521 SO_230 V ac (-20% +15%), 50/60 Hz	Single phase, 65 A



CONTAX 0641 SO

- Single phase analogue meter for indirect measurement through current transformers.
- Selectable indirect measurement up to 1000/5 A.
- Opto-isolator pulse output communication.

Code	Reference	Features
OB708500	CONTAX 0641 SO_230 V ac (-15% +10%), 50/60 Hz	Single phase, 1000 / 5 A



MODULAR ENERGY METERS / SINGLE-PHASE / DIGITAL



CONTAX D-2221

- 10 (22) A direct measurement.
- Backlit LCD for viewing, even in the dark.
- Partial set to zero meter.

Code	Reference	Features
OB708700	CONTAX D-2221 _230 V ac (-15% +10%), 50/60 Hz	Single phase, 22 A



CONTAX D-2511 SO

- Single phase one-module digital meter.
- Small sizes for electrical panels with little available space.
- 5 (25) A direct measurement.

Code	Reference	Features
OB701100	CONTAX D-2511 SO_230 V ac (-20% +15%), 50/60 Hz	Single phase, 25 A



CONTAX D-3221 SO

- Two-module width.
- Opto-isolator pulse output.
- Backlit LCD with 5 digits + 1 decimal place without set to zero.

Code	Reference	Features
OB703100	CONTAX D-3221 SO_230 V ac (-20% +15%), 50/60 Hz	Single phase, 32 A



CONTAX D-6331 SO

- Single phase three-module digital meter.
- 10 (63) A direct measurement.
- Reading by built-in current transformer.

Code	Reference	Features
OB708100	CONTAX D-6331 SO_230 V ac (-15% +10%), 50/60 Hz	Single phase, 63 A



CONTAX D-6521 SO

- 10 (65) A direct measurement.
- Backlit LCD with 5 digits + 1 decimal place without set to zero.
- Opto-isolator pulse output communication.

Code	Reference	Features
OB707100	CONTAX D-6521 SO_230 V ac (-20% +15%), 50/60 Hz	Single phase, 65 A





MODULAR ENERGY METERS / THREE-PHASE / ANALOGUE



CONTAX 0643 SO / CONTAX 0643i SO

- Analogue meter for reading active energy consumption in three phase lines with or without neutral.
- Admits current transformers up to 1000/5 A. Simple adjustment of ratio in equipment.
- Opto-isolator pulse output communication.

Code	Reference	Features
OB708900	CONTAX 0643 SO_3x230(400) V ac (-10% +10%), 50/60 Hz	Three phase, 1000/5 A
OB708800	CONTAX 0643i SO_3x230(400) V ac (-10% +10%), 50/60 Hz	Three phase, 1000/5 A with TT



CONTAX 0643 AR SO

- Analogue meter for reading active and reactive energy consumption in three phase lines with or without neutral.
- Admits current transformers up to 1000/5 A. Adjustment of ratio in equipment.
- Two opto-insulator SO type pulse outputs based on EN 62053-31

Code	Reference	Features
OB708600	CONTAX 0643 AR SO_3x230(400) V ac (-15% +10%), 50/60 Hz	Three phase, active/reactive

MODULAR ENERGY METERS / THREE-PHASE / DIGITAL



CONTAX D-8043 SO MID

- Digital three phase meter for direct measurement up to 80 A.
- With MID certification based on European Directive 2014/32/EU.
- SO pulse output communication.

Code	Reference	Features
OB709700	CONTAX D-8043 SO MID	Three phase, 80 A



CONTAX D-9073 SO

- Digital meter for reading active energy consumption in three phase lines with or without neutral.
- 10 (90) A direct measurement.
- No connection to line phase required, reading by built-in current transformer.

Code	Reference	Features
OB708400	CONTAX D-9073 SO_3x230(400) V ac (-15% +10%), 50/60 Hz	Three phase, 90 A

MULTIFUNCTION METERS / SINGLE-PHASE



CONTAX D-6041-BUS

- Modbus (RTU and SO) communication.
- Wh and VARh import / export load curve resettable every 5, 15, 30 and 60 min, log file up to 12 months.
- Recording of maximums (V, A, W and VA), power failures, parameters (V, A, W, VA, Wh, VAh, cos phi, HZ).
- Billing: 12 months, 4 rates, 6 daily periods and public holidays.

Code	Reference	Features
OB709300	CONTAX D-6041-BUS_230 V ac (-20% +15%), 50 Hz	Single phase, 60 A



CONTAX D-6593-BUS-R V3x1

- Modbus (RTU and S0) communication with built-in cut-off relay for independent remote management of up to 3 single phase lines.
- Wh and VARh import / export load curve resettable every 5, 15, 30 and 60 min, log file up to 12 months.
- Recording of maximums (V, A, W and VA), power failures, parameters (V, A, W, VA, Wh, VAh, cos phi, HZ).
- Billing: 12 months, 4 rates, 6 daily periods and public holidays.



Code	Reference	Features
OB709400V3	CONTAX D-6593-BUS-R V3x1 _230 V ac (-20% +15%), 50 Hz	65 A single phase power supplies

MULTIFUNCTION METERS / THREE-PHASE



CONTAX D-6593-BUS-R

- Modbus (RTU and S0) communication with built-in three phase cut-off relay.
- Wh and VARh import / export load curve resettable every 5, 15, 30 and 60 min, log file up to 12 months.
- Recording of maximums (V, A, W and VA), power failures, parameters (V, A, W, VA, Wh, VAh, cos phi, HZ).
- Billing: 12 months, 4 rates, 6 daily periods and public holidays.



Code	Reference	Features
OB709400	CONTAX D-6593-BUS-R _3x230(400) V ac (-20% +15%), 50 Hz	Three phase, 65 A



CONTAX D-10093-BUS

- No phase connection required due to built-in current transformers, thus speeding up the installation
- Wh and VARh import / export load curve resettable every 5, 15, 30 and 60 min, log file up to 12 months.
- Recording of maximums (V, A, W and VA), power failures, parameters (V, A, W, VA, Wh, VAh, cos phi, HZ).
- Billing: 12 months, 4 rates, 6 daily periods and public holidays.

Code	Reference	Features
OB709200	CONTAX D-10093-BUS_3x230(400) V ac (-20% +15%), 50 Hz	Three phase, 100 A



CONTAX D-0643-BUS

- Digital three phase meter for indirect reading with Modbus (RTU) communication. Wh and VARh import / export load curve resettable every 5, 15, 30 and 60 min, log file up to 12 months.
- Recording of maximums (V, A, W and VA), power failures, parameters (V, A, W, VA, Wh, VAh, cos phi, HZ).
- Billing: 12 months, 4 rates, 6 daily periods and public holidays.



Code	Reference	Features
OB709200	CONTAX D-0643-BUS_3x230(400) V ac (-20% +15%), 50 Hz	Three phase, 5000 / 5 A



DIGITAL METERS



METRA M-V/A-R / METRA Q-V/A-R

- Can be used as a voltmeter for direct or ammeter up to 1000/5 A.
- Has a built-in 10 A switching relay for activation/deactivation of machines and circuits
- Resettable relay functions: Magnitude (volts or amps) / Maximum or minimum value / Differential value / Deactivation of automatic or manual alarm / Delay in seconds.
- Supply voltage 230 V ac (-15% +10%), 50/60 Hz.

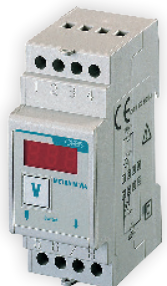
Code	Reference	Mount	Reading
OB520019	METRA M-V/A-R 600V,XA AC	DIN rail. 4 modules	Up to 600 V ac or Up to 1000/5 A
OB529004	METRA Q-V/A-R 600V,XA AC	Recessed 72 x 72 mm	Up to 600 V ac or Up to 1000/5 A



METRA M-V+A / METRA Q-V+A

- Operates as a voltmeter for direct measurement and ammeter up to 1000/5 A.
- Displays the voltage value in the top window and the current in amps in the lower window.
- LED display for enhanced viewing in dust-laden atmospheres such as food and mining industries, etc.
- Supply voltage 230 V ac (-15% +10%), 50/60 Hz.

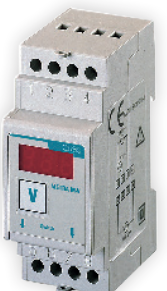
Code	Reference	Mount	Reading
OB520020	METRA M-V+A 600V,XA AC	DIN rail. 2 modules	From 10 to 615 V ac and Up to 1000/5 A
OB520021	METRA Q-V+A 600V,XA AC	Recessed 72 x 72 mm	From 10 to 615 V ac and Up to 1000/5 A



METRA M-V/A / METRA Q-V/A

- Can be used as a voltmeter for direct measurement or ammeter up to 1000/5 A.
- LED display for enhanced viewing in dust-laden atmospheres such as food, mining industries, etc.
- Supply voltage 115/230 Vac (-10% +15%). 50 - 60 Hz.

Code	Reference	Mount	Reading
OB520001	METRA M-V/A 600V,XA AC	DIN rail. 2 modules	Up to 600 V ac or Up to 1000/5 A
OB520002	METRA Q-V/A 600V,XA AC	Recessed 72 x 72 mm	Up to 600 V ac or Up to 1000/5 A

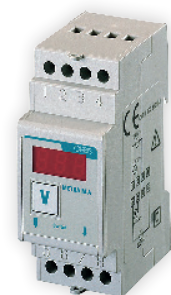


METRA M-V / METRA Q-V

- Voltmeter for machinery or direct current installations.
- LED display for enhanced viewing in dust-laden atmospheres such as food, mining industries, etc.
- Supply voltage 115/230 V ac (-10% +15%). 50 - 60 Hz.

Code	Reference	Reading	Mount
OB529001	METRA M-V 1V DC	Up to 1 V dc	DIN rail. 2 modules
OB520006	METRA M-V 10V DC	Up to 10 V dc	DIN rail. 2 modules
OB520007	METRA M-V 100V DC	Up to 100 V dc	DIN rail. 2 modules
OB520008	METRA M-V 600V DC	Up to 600 V dc	DIN rail. 2 modules
OB520009	METRA Q-V 1V DC	Up to 1 V dc	Mounted behind panel 72 x 72 mm
OB529002	METRA Q-V 10V DC	Up to 10 V dc	Mounted behind panel 72 x 72 mm
OB520011	METRA Q-V 100V DC	Up to 100 V dc	Mounted behind panel 72 x 72 mm
OB520012	METRA Q-V 600V DC	Up to 600 V dc	Mounted behind panel 72 x 72 mm





METRA M-A / METRA Q-A

- Amp reading for direct or alternating current.
- LED display for enhanced viewing in dust-laden atmospheres such as food, mining industries, etc.
- Supply voltage 115/230 V ac (-10% +15%). 50 - 60 Hz.

Code	Reference	Reading	Mount
OB520016	METRA M-A 10A DC	Up to 10 A d.c	DIN rail. 2 modules
OB529003	METRA M-A XA DC	Up to 1000/5 A d.c	DIN rail. 2 modules
OB520013	METRA M-A 10A AC	Up to 10 A a.c	DIN rail. 2 modules
OB520014	METRA Q-A 10A DC	Up to 10 A d.c	72 x 72 mm
OB520017	METRA Q-A XA DC	Up to 1000/5 A d.c	72 x 72 mm
OB520018	METRA Q-A 10A AC	Up to 10 A a.c	72 x 72 mm



METRA M-H / METRA Q-H

- Frequency meter for circuits, machines and alternating current motors.
- LED display for enhanced viewing in dust-laden atmospheres such as food, mining industries, etc.
- Supply voltage 115/230 V ac (-10% +15%). 50 - 60 Hz.

Code	Reference	Reading	Mount
OB520003	METRA M-H 100 Hz	Up to 100 Hz	DIN rail. 2 modules
OB520004	METRA Q-H 100 Hz	Up to 100 Hz	72 x 72 mm



NETWORK ANALYSERS



ANRET M / ANRET Q

- Reading of single/three phase line electrical parameters with or without neutral.
- Admits current transformers up to 10,000/5 A. Simple adjustment of ratio in equipment.
- Backlit adjustable LCD for viewing, even in the dark.
- Reading of V, A, W, VAR, VA, Wh, VARh, cos phi, Hz, sequence and phase angle.

Code	Reference	Mount
OB540004	ANRET M_1 PH/3PH 230 V ac (-15% +10%), 50/60 Hz	DIN rail 4 modules
OB540005	ANRET Q_1 PH/3PH 230 V ac (-15% +10%), 50/60 Hz	72 x 72 mm



ANRET M-R / ANRET Q-R

- Reading of single and three phase lines, with or without neutral and two resettable output relays.
- Functions:
 - Total magnitude or by phase (V, A, Wh, etc.).
 - Maximum or minimum alarm value
 - Differential value
 - N/O or N/C relay operation
 - Automatic or manual alarm deactivation
 - Delay in seconds
- Admits current transformers up to 10,000/5 A. Simple adjustment of ratio in equipment.
- Reading of V, A, W, VAR, W, Wh, VARh, cos phi, Hz, sequence and phase angle.

Code	Reference	Mount
OB540008	ANRET M-R_1 PH/3PH 230 V ac (-15% +10%), 50/60 Hz	DIN rail 4 modules
OB540009	ANRET Q-R_1 PH/3PH 230 V ac (-15% +10%), 50/60 Hz	72 x 72 mm





ANRET M-BUS / ANRET Q-BUS

- Reading of single and three phase lines, with or without neutral and Modbus RTU output.
- When connected online without amplifier, permits communication with up to 32 devices. Maximum reading range 1000 metres.
- Admits current transformers up to 10,000/5 A. Simple adjustment of ratio in equipment.
- Reading of V, A, W, VAR, W, Wh, VARh, cos phi, Hz, sequence and phase angle.



Code	Reference	Mount
OB540006	ANRET M-BUS_1 PH/3PH 230 V ac (-15% +10%), 50/60 Hz	DIN rail. 4 modules
OB540007	ANRET Q-BUS_1 PH/3PH 230 V ac (-15% +10%), 50/60 Hz	Recessed 72 x 72 mm

ANRET M-22

- Reading of single phase lines by direct measurement up to 22 A.
- Backlit adjustable LCD for viewing, even in the dark.
- Partial active energy set to zero meter.
- Reading of V, A, W, Wh, cos phi, Hz.



Code	Reference	Mount
OB540001	ANRET M-22_1 PH 230 V ac (-15% +10%), 50/60 Hz	DIN rail. 3 modules

ANRET M-22-BUS

- Reading and transmission of single phase lines up to 22 A through RS485 port.
- When connected online without amplifier, permits communication with up to 32 pieces of equipment. Maximum reading range 1000 metres.
- Reading of V, A, W, Wh, cos phi, Hz.



Code	Reference	Mount
OB540003	ANRET M-22-BUS_1 PH 230 V ac (-15% +10%), 50/60 Hz	DIN rail. 3 modules

ANRET M-63

- Built-in current transformer for 63 A with phase wire up to 25 mm².
- Backlit adjustable LCD for viewing, even in the dark.
- Partial active energy set to zero meter.
- Reading of V, A, W, Wh, cos phi, Hz.



Code	Reference	Mount
OB540002	ANRET M-63_1 PH 230 V ac (-15% +10%), 50/60 Hz	DIN rail. 3 modules

ANRET M-90A-BUS

- Three phase network up to 90 A with reading through built-in transformers and RS485 output
- Permits instant viewing of parameters and cumulative values through the CONTAX-ANRET software.
- Reading of V, A, W, VAR, W, Wh, VARh, cos phi, Hz, sequence and phase angle.



Code	Reference	Mount
OB540012	ANRET M-90A-BUS_3 PH 400 V ac (-15% +10%), 50/60 Hz	DIN rail. 7 modules



ANRET M-Multi / ANRET Q-Multi

- LED display for enhanced viewing in dust-laden atmospheres such as food, mining, building industries, etc.
- Admits current transformers up to 10000/5 A and 10000/230 V a.c.
- Supply voltage 115-230 V a.c. 50/60 Hz. Network reading 3 x 230 (400) V a.c. 50/60 Hz.



Code	Reference	Mount
OB540010	ANRET M-MULTI_3 PH	DIN rail. 9 modules
OB540011	ANRET Q-MULTI_3 PH	72x72 mm

ENERGY MANAGERS



XEO ENERGY / XEO ENERGY 3G

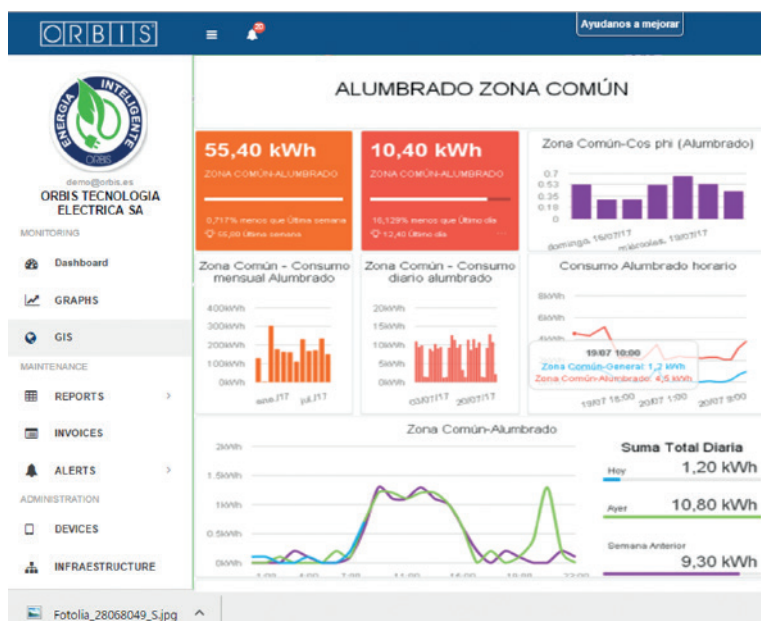
- With standard interfaces for energy measuring devices.
- 2 RS485 Modbus RTU ports for integration of devices.
- 8 S0 pulse inputs for reading measurements or inputs for signalling alarms, triggering protections or other devices.
- 1 GB of storage space for recording load curves, events, parameter readings, etc.
- Power failure warning battery.



Code	Reference	Communications
OB709984	XEO ENERGY_85-285 V ac 50 Hz	ETHERNET
OB7099843G	XEO ENERGY 3G_85-285 V ac 50 Hz	MÓDEM 3G

ENERGY MANAGEMENT WEB PLATFORM

- Energy measurement and management platform applicable from small individual installations to large industries and buildings with more specific needs.
- Viewing and reading in real time of electrical consumption and parameters.
- Grouping of meters by zones or types of use, depending on the installation.
- GIS (Geographic Information System).
- Creation of reports by periods, groupings and comparative.
- Recording and viewing of log files.





ENERGY MEASUREMENT AND MANAGEMENT ACCESSORIES



CONTAX NET

- S0 type pulses collector for up to 8 meters (electricity, water, gas, etc.).
- With a dual tariff clock connection and Modbus ASCII output.
- Permits the creation of a network of meters for reading with software from a central station.

Code	Reference	Compatible with
OB708300	CONTAX NET_230 V ac (-15% +10%), 50/60 Hz	Frequency adapter and MODBUS-TCP.



MODBUS-TCP GATEWAY

- Enables access to Modbus RTU/ASCII meter networks through TCP/IP networks.
- Distribution of several Modbus gateways to simplify the network typology.
- Compatible with: CONTAX NET (OB708300) / CONTAX BUS and ANRET BUS series.

Code	Reference
OB709972	MODBUS-TCP GATEWAY



RS232/485-ETHERNET ADAPTER

- Reading of meter networks with an RS485 output via Ethernet 10/100 Base TX network.
- 3-in-1 RS-232/422/485 interface Max.230Kbps Serial interface and 10/100 Mbps Ethernet interface.
- MAC address IP configuration support.

Code	Reference
OB707016	ADAPTER RS232/485-ETHERNET



RS232/485-RADIOFREQUENCY ADAPTER

- Reading of an RS485 meter network and 433 MHz radio frequency transmission.
- Transmission distance approximately 300 m
- Transmission speed: 1200 / 2400 / 4800 / 9600 / 19200 / 38400 bps.
- LED indicator lamps: power supply, transmitting and receiving.

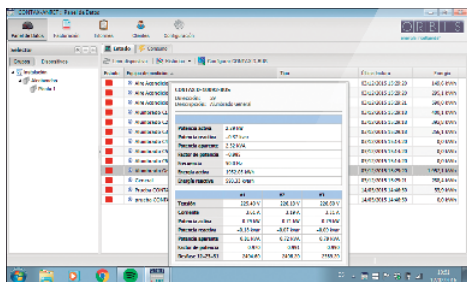
Code	Reference
OB707018	ADAPTER RS485-RADIOFREQUENCY



USB-RS485 ADAPTER

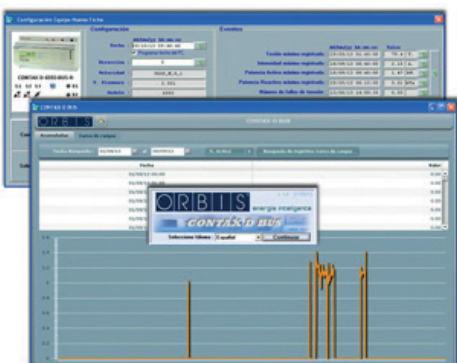
- Permits the connection of equipment with an RS485 serial interface through a USB PC port.

Code	Reference
OB707022	ADAPTER RS485 - USB



CONTAX-ANRET SOFTWARE

- User friendly software for resetting and managing submetering installations.
- Management by groups and subgroups.
- Reading and resetting of the CONTAX BUS series with editing of tariffs and hourly discriminations, load curves, instant and historical measurement, events, cut-off relay functions, etc.



SOFTWARE CONTAX D-BUS

- User friendly software.
- Languages: Spanish, English, French, German, Portuguese and Italian.
- Can be accessed with the CONTAX ANRET software.
- Viewing and reading in real time of electrical consumption and parameters (voltage, current, active, reactive and apparent power, frequency, power factor).
- Multi-port and multi-device configuration, permits the combination of the different devices models existing in the installation.

LOAD MANAGERS

ENERGEST



- Recognises the consumption of each circuit and connects them when possible, without exceeding the established limit.
- All that is required is to programme the maximum current for starting to operate.
- Displays the main electrical parameters of the installation such as voltage, current, active and reactive power, power factor, total and partial active energy and frequency.

Code	Reference	Contacts
OB709000	ENERGEST_230 V ac (-15% +10%), 50/60 Hz	2 x N/O

GESTCON 1



- Load control relay, depending on total consumed power, resettable up to 7 kW.
- Controls the connection/disconnection priority of a load block.
- Has a built-in resettable, acoustic buzzer.

Code	Reference	Contacts
OB709010	GESTCON 1_230 V ac (-15% +10%), 50/60 Hz	1 changeover

GESTCON 3



- Load control relay, depending on total consumed power, resettable up to 15 kW.
- Controls the connection/disconnection priority of up to 3 loads or load blocks.
- All that is required is to establish the total maximum power and prioritise the loads.

Code	Reference	Contacts
OB709020	GESTCON 3_230 V ac (-15% +10%), 50/60 Hz	3 changeover





BILLING ENERGY METERS / SINGLE-PHASE



MER b / MER b LCD

- Measuring of consumption in single phase networks with direct connection up to 100 A and class 1 precision.
- MERb LCD has a built-in 7-digit LCD.
- Never takes negative readings due to connection errors.



Code Reference

OB725001	MER b_LCD, 230 V ca., 50/60 Hz, 10(100) A
OB725002	MER b_LCD, 120 V ca., 60 Hz, 10(100) A
OB725003	MER b_230 V ca., 50/60 Hz, 10(100) A
OB725004	MER b_120 V ca., 60 Hz, 10(100) A

BILLING ENERGY METERS / THREE-PHASE



TER b LCD

- The different TERb models meet basic measuring needs in three phase installations such as residential, commercial, agrarian, etc.
- The viewer consists of an LCD for enhanced viewing, with 5 digits + 1 decimal place.
- High accuracy throughout the load curve.

Code Reference

OB726001	TER B_LCD 3x230/400 V ca., 50/60 HZ, 10 (100) A
----------	---

PRIME SMART METER / SINGLE-PHASE



DOMOTAX TELEGEST PRIME

- Single phase smart meter with PLC communication and remote management functions via DLMS protocol for PRIME.
- Remote communication with the DOMOTAX TeLeGeST PRIME CONCENTRATOR for control through power line (PLC communication).



Code Reference

OB728030	DOMOTAX TELEGEST PRIME
----------	------------------------

Supply

Single phase, three phase direct 60 A

PRIME SMART METER / THREE-PHASE



DOMOTAX TELEGEST PRIME d3P

- Three phase direct measurement meter with PLC communication and remote management via DLMS protocol based on PRIME specifications.
- Remote communication with the DOMOTAX TeLeGeST PRIME CONCENTRATOR for control through power line (PLC communication).



Code Reference

OB708010D	DOMOTAX TELEGEST PRIME d3
-----------	---------------------------

Supply

Three phase direct measurement



PRIME CONCENTRATOR



CONCENTRADOR PRIME 9710

- PRIME remote management meter concentrator with a smart data concentrator under the casing and LV supervision.

Code

OB727240

Reference

DOMOTAX TELEGEST CONCENTRATOR



OUTDOOR LIGHTING MANAGEMENT



ASTRONOMIC TIME SWITCHES	51
TWILIGHT SWITCHES	53
HIGH PERFORMANCE LIGHT STABILISERS-DIMMERS	54
SMART CITIES / REMOTE MANAGEMENT	55

ASTRONOMIC TIME SWITCHES



ASTRO UNO / ASTRO NOVA CITY

- Daily updating and easy programming guided by text menus.
Fixed or astronomical manoeuvres (sunrise and sunset).
- With a connection port for smartphone programming.
- Permits 4 annual periods between two dates with special programming.
- Backlit display to improve viewing, even in the dark.



Code	Reference	Output
OB178112	ASTRO UNO_230 V ac 50/60 Hz	1 changeover
OB178012	ASTRO NOVA CITY_230 V ac 50/60 Hz	2 changeover
OBXXXXX	ASTRO NOVA CITY_120/230 V ac 50/60 Hz	2 changeover



BLUETOOTH DONGLE

- Permits two-way Bluetooth connection with the following models: DATA LOG, DATA LOG 2, ASTRO NOVA CITY and ASTRO UNO.
- Compatible with:
 - Apple (iPhone 4S or later version, iPad 3 or later version)
 - Android (version 4.3 or later and devices compatible with Bluetooth 4.0 LE)
 - Free application available on Google Play and App Store

Code	Reference
OB709971	BLUETOOTH DONGLE



ASTRO UNO BLUETOOTH / ASTRO NOVA CITY BLUETOOTH

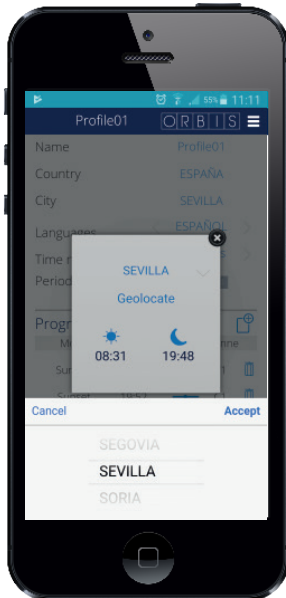
- Built-in two-way Bluetooth connection for programming and reading via smartphone.
- Fixed or astronomical manoeuvres (sunrise and sunset).
- Exchangeable front battery.
- Backlit display to improve viewing, even in the dark.



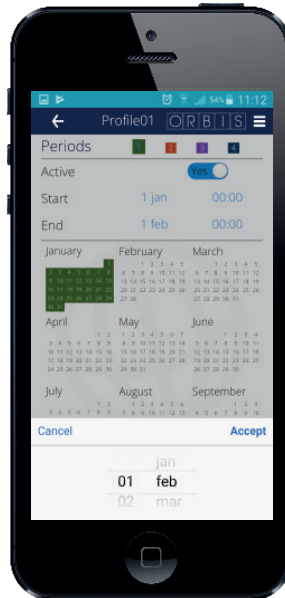
Code	Reference	Output
OB178312	ASTRO UNO BT_230 V ac 50/60 Hz	1 changeover
OB178412	ASTRO NOVA CITY BT_230 V ac 50/60 Hz	2 changeover

ASTRO NOVA CITY / ASTRO UNO App

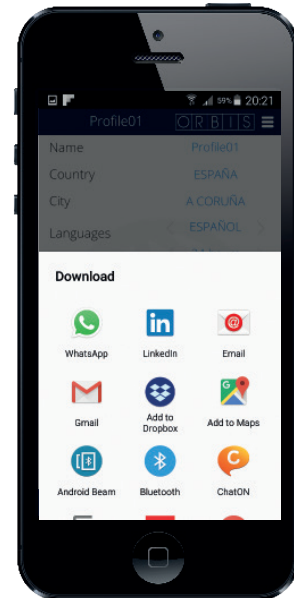
- Easy editing of programmes with selection of days, hours and type of operation.
- Store the programmes in your smartphone.
- Monthly programming.



City programming or geolocation with sunset and sunrise times consultation.



Editing of special or holiday programmes.



Save, send or share programmes.



Viewing of daily, weekly or annual installation consumption.



TWILIGHT SWITCHES



VEGA DIN

- Twilight switch for DIN rail mounting and with external IP65 twilight sensor.
- Single N/O contact with 20 sec. delay.
- LED lamp operating indicator.

Code	Reference	Regulation
OB131612	VEGA DIN _230 V ac (-15% +10%), 50/60 Hz	10 to 100 lux



VEGA

- Flush mount on wall and on rod.
- External regulation and delay to prevent undesirable switching on or off.
- IP54 high protection rating.

Code	Reference	Regulation
OB131712	VEGA_230 V ac 50 Hz	5 to 300 lux



ORBILUX

- Flush mount on wall or rod with brackets.
- Compact design and external equipment regulation.
- Test button for checking connections and correct lamp operation.
- LED lamp operating indicator.

Code	Reference	Regulation
OB132012	ORBILUX_230 V ac 50/60 Hz	5 to 200 lux



ORBIFOT

- Extremely robust twilight switch, due to its special protection against electric storms.
- High protection rating IP65, allowing for operation in extreme conditions.
- Installation: Square flush mount or screwed to the lamp.

Code	Reference	Regulación
OB132200	ORBIFOT_230 V ac 50/60 Hz	5 to 1.000 lux



CIRCUMAT PRO 1 - 10V

- Presence sensor with a 1...10 V analogue output for adjustable light control.
- Permits artificial light adjustment depending on the natural light.

Code	Reference	Applications
OB134910	CIRCUMAT PRO 1-10 V_230 V ac 50/60 Hz	Corridors, meeting rooms, offices classrooms, stores, restaurants.





HIGH PERFORMANCE LIGHT STABILISERS-DIMMERS



ESDONI EN

- High efficiency light flux stabiliser dimmer.
- Designed for three phase lines with 3x230 (400) V ac.
Three phase without neutral versions available.
- Admits local control through XEO LUM LOCAL (OB509901).
- Admits remote management through XEO LUM (OB509920).

Code	Code	Code	Reference	Power	Max. current/ phase
Metal cabinet	Polyester cabinet	No cabinet			
OB50EN10CM	OB50EN10CP	OB50EN10S	ESDONI-EN-10	10 kVA	15 A
OB50EN20CM	OB50EN20CP	OB50EN20S	ESDONI-EN-20	20 kVA	30 A
OB50EN30CM	OB50EN30CP	OB50EN30S	ESDONI-EN-30	30 kVA	45 A
OB50EN40CM	OB50EN40CP	OB50EN40S	ESDONI-EN-40	40 kVA	60 A
OB50EN50CM	OB50EN50CP	OB50EN50S	ESDONI-EN-50	50 kVA	75 A
OB50EN60CM	OB50EN 60CP	OB50EN 60S	ESDONI-EN-60	60 kVA	90 A



ESDONI M

- Designed for single phase lines with 230 V a.c. neutral.
- Reduced voltage: 175, 185, 195 and 205 V ac.

Code	Code	Code	Reference	Power	Max. current/ phase
Metal cabinet	Polyester cabinet	No cabinet			
OB50M3CM	OB50M3CP	OB50M3S	ESDONI-M-3	3,3 kVA	15 A
OB50M6CM	OB50M6CP	OB50M6S	ESDONI-M-6	6,6 kVA	30 A
OB50M10CM	OB50M10CP	OB50M10S	ESDONI-M-10	10 kVA	45 A
OB50M16CM	OB50M16CP	OB50M16S	ESDONI-M-16	16,6 kVA	75 A



MANUAL BYPASS

- Manual switch to permit or cancel the installation regulation through the ESDONI equipment.
- Has three settings:
 - Automatic: Permits regulation of the installation through ESDONI.
 - Off: The installation remains inoperative.
 - Bypass: Cancels the regulation through ESDONI, allowing the installation to operate with mains voltage.

Code	Reference
OB50N993	ESDONI MANUAL BYPASS EN-10
OB50N994	ESDONI MANUAL BYPASS EN-20
OB50N995	ESDONI MANUAL BYPASS EN-30
OB50N996	ESDONI MANUAL BYPASS EN-40
OB50N997	ESDONI MANUAL BYPASS EN-50
OB50N986	ESDONI MANUAL BYPASS EN-60



STAINLESS STEEL CABINET

- Stainless steel electric cabinet with matte finish.

Code	Reference
OB50CIN	ESDONI INOX. CABINET



REGULATION ACCESSORIES

- ARL permits a reduction in supply voltage to MV lamps from 195 V to 175 V.
- Energy savings of about 35% and stable operation for MV lamps.
- Small size and easy connection to ballast.

Code	Reference	Lamp power
OB50N991	ARL-1_80-125 W	80-125 W
OB50N992	ARL-2_250-450 W	250-400 W

SMART CITIES / REMOTE MANAGEMENT



XEO LUM

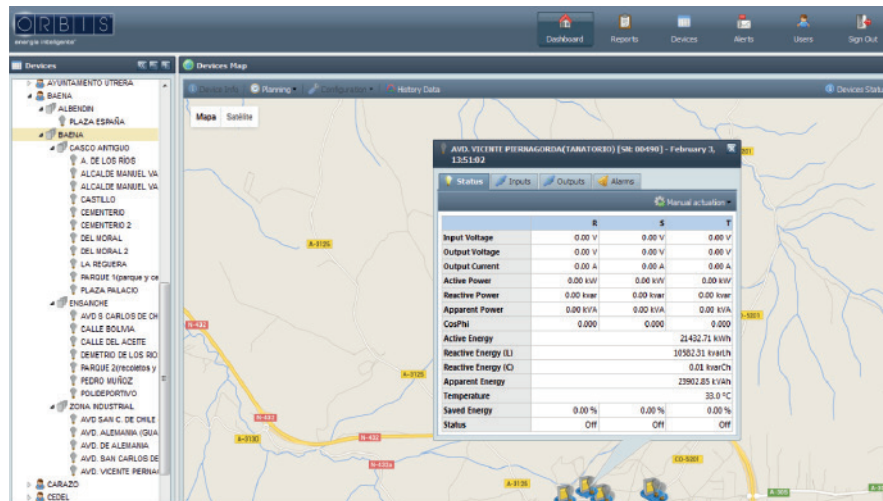
- Remote management of large lighting installations such as those of city halls, motorways and large factories.
- Integration with web management platform in real time, remote actuation, historic logs, reports, SMS or email alarms, 3 user levels, etc.
- Digital inputs to detect alarms through triggering of protections, open door, etc.
- Analogue inputs for temperature sensors or any other control element.



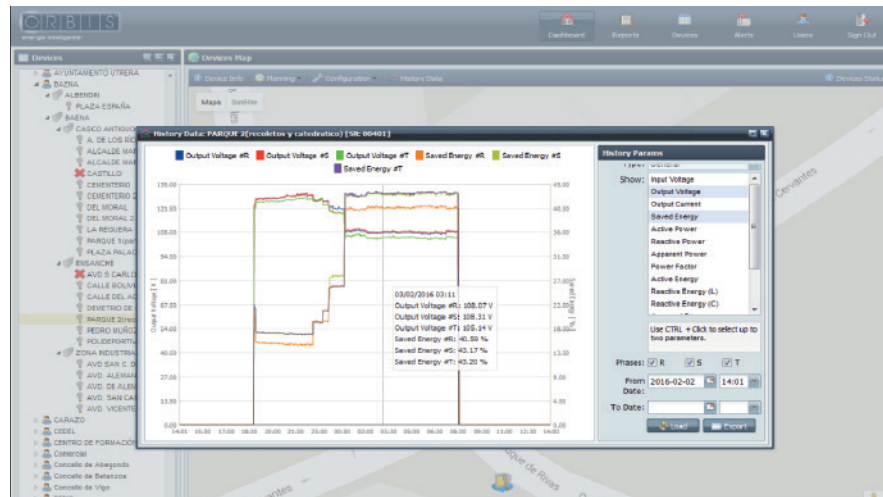
Code	Reference
OB509920	XEO LUM _230 V ac 50/60 Hz

XEO LUM WEB PLATFORM

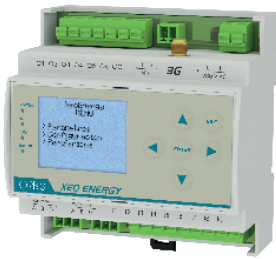
- Web app for remote management of large lighting installations.
- Inventory of lighting cabinets and their components.
- Reception of alarms by triggering of protections, opening of cabinet or electrical parameter deviations.
- Creation of pdf reports and log files in CSV format.



Permits the creation of a tree structure with groups and subgroups. Georeferenced viewing in Google maps. Consultation of electrical parameters and inputs/outputs status in real time.



Consultation of electrical parameter historic log files between dates with the option of exporting.



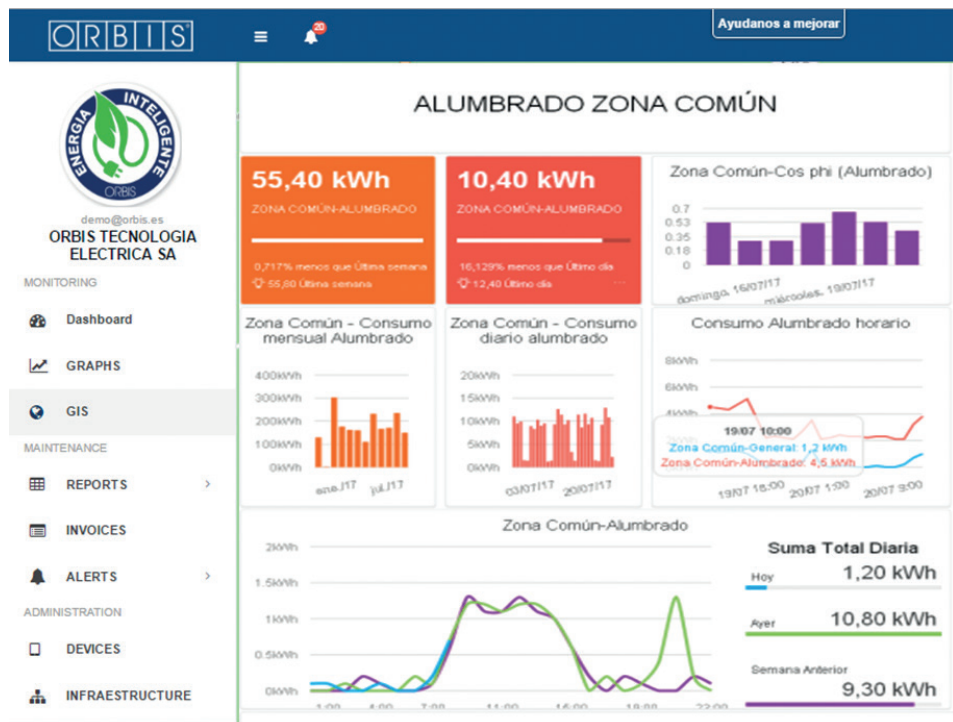
XEO ENERGY / XEO ENERGY 3G

- Can be modified and adapted to other energy or control projects such as charging of electric vehicles, car wash tunnel management, weather stations, mining concerns, photovoltaic installations or street lights, etc.
- With standard interfaces for energy measuring devices:
 - 2 RS485 Modbus RTU ports for integration of devices.
 - 8 S0 pulse inputs for reading measurements. These inputs can also be configured or used as inputs for alarm signalling, triggering protections or other operations.

Code	Reference
OB709984	XEO ENERGY_85-285 V ac 50 Hz ETHERNET
OB7099843G	XEO ENERGY 3G_85-285 V ac 50 Hz MODEM 3G

ENERGY MANAGEMENT WEB PLATFORM

- Energy measurement and management platform applicable from small individual installations to large industries and buildings with more specific needs.
- Viewing and reading in real time of electrical consumption and parameters.
- Grouping of meters by zones or types of use, depending on the installation.
- GIS (Geographic Information System).
- Creation of reports by periods, groupings and comparative.
- Recording and viewing of log files.





SMART CITIES / LOCAL MANAGEMENT



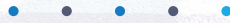
XEO LUM LOCAL

- Local management of ESDONI flux stabiliser-reducers.
- Permits the configuring of the following options on the XEO LUM LOCAL keyboard: Editing and consulting of the equipment operation mode. Configuring of system alarms. Programming of date, time and geographic coordinates. Astronomical clock programming modification. Changing of start-up times and operating voltage (start-up, nominal and 4 reduced).
- Can be adapted to any existing control station due to its 9 module size and DIN rail mounting, meaning it can be integrated with conventional control stations or in stations with a built-in energy saving system.
- Digital inputs for alarm detection by triggering of protections, door open or any other purpose.
- Analogue inputs for temperature sensors or any other control element.
- These inputs are very useful for connecting twilight switches for lighting regulation in tunnels or internal lighting in factories, sports pavilions, etc.
- Potential-free outputs for switching the installation on/off, activating/deactivating energy saving systems or for any other purpose.
- Backlit, high contrast display.
- LED status, connection and error indicator lamps. Menu in Spanish, English and French.

Code	Reference
OB509901	XEO LUM LOCAL _230 V ac 50/60 Hz



ELECTRIC MOBILITY



ELECTRIC VEHICLE CHARGING SYSTEMS

EV SMART CHARGERS FOR PRIVATE ENVIRONMENTS

59

EV SMART CHARGERS FOR PUBLIC ENVIRONMENTS

61






EV SMART CHARGERS FOR PRIVATE ENVIRONMENTS



VIARIS COMBI

- Single phase domestic charger for cars, motorbikes, electric bikes or plug-in hybrid vehicles.
- The 3.7 kW equipment uses the standard household electric supply. With this power, the charge process for a car would be approximately 8 hours.
- The electric power supplied to the equipment, 7.4 kW, permits an electric vehicle charge process of about 4 hours.
- Models with 5 metre connection cables and Type 1 or Type 2 connector, in accordance with EN 62196-2.
- Models with built-in charge base can be configured with a Schuko or Type 2 base, in accordance with EN 62196-2.
- Load activation/deactivation touch sensor.
- WIFI communication and programming via App for smartphone.
- Load modulator that takes into account the home energy consumption and adjusts the power demand to achieve the highest charge in the least possible time, without exceeding the contracted power.
- LED vehicle charge status indicator lamp.
- Extremely rigid ABS-PC casing with IK08 impact resistance, IP54 protection rating and resistance to high temperature deformation.



Code	Reference	Power	Connection	Connection type	Communication
OB94DM3716CT1	VIARIS COMBI_3,7 kW, 16 A, hose T1	3,7 kW 16 A	Flexible hose of 5 m.	 Type 1 based on EN 62196-2	Type 3 based on EN 61851-1
OB94DM3716CT2	VIARIS COMBI_3,7 kW, 16 A, hose T2			 Type 2 based on EN 62196-2	
OB94DM3716BT2	VIARIS COMBI_3,7 kW, 16 A, socket T2		Connection base	 Schuko based on UNE 20315-1-2 Fig.C2a	
OB94DM3716BSK	VIARIS COMBI_3,7 kW, 16 A, socket schuko				
OB94DM7432CT1	VIARIS COMBI_7,4 kW, 32 A, hose T1	7,4 kW 32 A	Flexible hose of 5 m.	 Type 1 based EN 62196-2	Type 3 based on EN 61851-1
OB94DM7432CT2	VIARIS COMBI_7,4 kW, 32 A, hose T2			 Type 2 based EN 62196-2	
OB94DM7432BT2	VIARIS COMBI_7,4 kW, 32 A, socket T2		Connection base		

The basic model selected can be used with the following accessories:

- OB94D008: Temporary and transitory surge current protection, magneto thermal switch and differential switch.
- OB94D009: Automatic reset device.
- OB94D012: MID-certified energy measuring device, approved for control usage costs (EN 50470-3).
- OB94D011: LED matrix display of 7 x 20 with indication of charge status, consumption, etc.
- OB94D014: RFID card reader with 5 cards instead of touch sensor. For installations that require user identification, prepayment or individual registration of electricity consumption.
- OB94D013: For installations that require Ethernet communication.

The 3.7 KW, 16 A model can also be used with the following accessories:

- OB94D007: Additional Schuko base output (EEC 7/4 Type F) Charge mode 1 and 2.
- OB94D005: Additional Type 2 EN 62196-2 base output Charge mode 3.
- OB94D001: 5 m Type 1 EN 62196-2 hose (SAE J1772) Charge mode 3.
- OB94D003: 5 m Type 2 EN 62196-2 hose Charge mode 3.

The 7.4 kW, 32 A model can also be used with the following accessories:

- OB94D006: Additional Type 2 EN 62196-2 base output Charge mode 3.
- OB94D002: 5 m Type 1 EN 62196-2 hose (SAE J1772) Charge mode 3.
- OB94D004: 5 m Type 2 EN 62196-2 hose Charge mode 3.

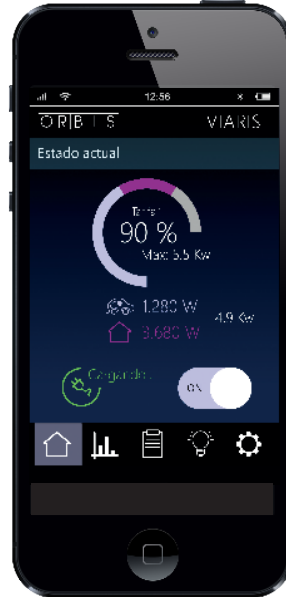


VIARIS App

- Permits the recording of several electric vehicle chargers.
- Remote charge status consultation.
- Records home and vehicle energy consumption in a single app for smartphone.



Configuration of contracted power and prices for each tariff.



Real time consultation of charge status and energy consumption of the home and vehicle.



Charge log files between two dates with start time, duration and consumed power.



Recording of average historical daily, monthly or annual energy consumption.



EV SMART CHARGERS FOR PUBLIC ENVIRONMENTS



VIARIS CITY

- Basic models with powers of 2.3 kW to 22 kW, depending on the power needs.
- Geolocation of charge stations.
- Prepayment systems via App for mobile phone, card or other.
- Communication with manager: RS485, Ethernet, 3G/GPRS, etc.
- Compatibility with system integrators and OCPP systems. Communication with user: SMS, App or other.
- Obtaining of information for statistical purposes or preventive fleet maintenance.
- Indicator lamps: station busy or reserved, vehicle connected, charging, charge status, end of charge and error.
- Casing closed with lock and key.

Code	Reference	Supply	Power	Connection type	Charge mode
OB94M2316	VIARIS CITY_2,3 kW, 10-16 A, socket schuko	Single phase 230 V ac 50 Hz	2,3 kW 10-16 A	Schuko based on UNE 20315-1-2 Fig.C2a	Mode 1 and 2 based on EN 61851-1
OB94M3716	VIARIS CITY_3,7 kW, 16 A, socket T2		3,7 kW 16 A	Type 2 based on EN 62196-2	Type 3 based on EN 61851-1
OB94M7432	VIARIS CITY_7,4 kW, 32 A, socket T2		7,4 kW 32 A		
OB94M2316SS	VIARIS CITY_2,3 kW, 10-16 A, 2 x socket schuko	2 x single phase 230 V ac 50 Hz	2 x 2,3 kW 10-16 A	2 x Schuko based on UNE 20315-1-2 Fig.C2a	Mode 1 and 2 based on EN 61851-1
OB94M3716T2T2	VIARIS CITY_3,7 kW, 16 A, 2 x socket T2		2 x 3,7 kW 16 A	2 x Type 2 based on EN 62196-2	Type 3 based on EN 61851-1
OB94M7432T2T2	VIARIS CITY_7,4 kW, 32 A, 2 x socket T2		2 x 7,4 kW 32 A		
OB94MM372316	VIARIS CITY_3,7 kW, 16 A, socket T2 + 2,3 kW, 10-16 A, socket schuko		3,7 kW 16 A + 2,3 kW 10-16 A	Type 2 based on EN 62196-2 + Schuko based on UNE 20315-1-2 Fig.C2a	Mode 1, 2 and 3 based on EN 61851-1
OB94T1116	VIARIS CITY_11 kW, 3x16 A, socket T2	Three phase 3x230/400 V ac 50 Hz	11 kW 3 x 16 A	Type 2 based on EN 62196-2	Type 3 based on EN 61851-1
OB94T2232	VIARIS CITY_22 kW, 3x32 A, socket T2		22 kW 3 x 32 A		
OB94TM112316	VIARIS CITY_11 kW, 3x16 A, socket T2 + 2,3 kW, 10-16 A, socket schuko	Three phase 3x230/400 V ac 50 Hz + Single phase 230 V ac 50 Hz	11 kW 3 x 16 A + 2,3 kW 10-16 A	Type 2 based on EN 62196-2 + Schuko based on UNE 20315-1-2 Fig.C2a	Mode 1, 2 and 3 based on EN 61851-1
OB94TM222316	VIARIS CITY_22 kW, 3x32 A, socket T2 + 2,3 kW, 10-16 A, socket schuko		22 kW 3 x 32 A + 2,3 kW 10-16 A		

The basic model selected can be used with the following accessories:

- OB940007: AISI 304/430 stainless steel base. Textured paint colour RAL 7035.
- OB940001: For installations that require Ethernet communication.
- OB940002: 3G/GPRS for installations that require communication and have no Ethernet access available.
- OB940003: Secondary single phase meter for repercussion of charge costs.
- OB940004: Secondary three phase meter for repercussion of charge costs.
- OB940005: RFID reader for installations that require user identification by prepayment or unblocking of charger.